

Biomass-modulated fire dynamics during the Last Glacial–Interglacial Transition at the Central Pyrenees (Spain)[☆]



Graciela Gil-Romera^{a,*}, Penélope González-Sampériz^a, Laura Lasheras-Álvarez^a, Miguel Sevilla-Callejo^a, Ana Moreno^a, Blas Valero-Garcés^a, Lourdes López-Merino^{b,c}, José S. Carrión^c, Ana Pérez Sanz^a, Josu Aranbarri^{a,d,e}, Eduardo García-Prieto Fronce^a

^a Quaternary Palaeoenvironments and Global Change Dept., Instituto Pirenaico de Ecología-CSIC, Campus Aula Dei, Avda. Montañana 1005, 50059 Zaragoza, Spain

^b Institute for the Environment, Brunel University, Uxbridge, London, Middlesex UB8 3PH, UK

^c Department of Plant Biology, Facultad de Biología, Universidad de Murcia, Campus del Espinardo, Murcia, Spain

^d Dipartimento di Biologia Ambientale, Sapienza Università di Roma, Piazzale Aldo Moro, 5, 00185 Rome, Italy

^e Departamento de Estratigrafía y Paleontología, Universidad del País Vasco-Euskal Herriko Unibertsitatea, B. Sarriena s/n, Ap. 644, 48080 Bilbao, Spain

ARTICLE INFO

Article history:

Received 22 November 2013

Received in revised form 28 February 2014

Accepted 9 March 2014

Available online 16 March 2014

Keywords:

Fire history

Quaternary

Lateglacial

Palaeoecology

Historical biogeography

Iberian Peninsula

ABSTRACT

Understanding long-term fire ecology is essential for current day interpretation of ecosystem fire responses. However palaeoecology of fire is still poorly understood, especially at high-altitude mountain environments, despite the fact that these are fire-sensitive ecosystems and their resilience might be affected by changing fire regimes. We reconstruct wildfire occurrence since the Lateglacial (14.7 cal ka BP) to the Mid-Holocene (6 cal ka BP) and investigate the climate–fuel–fire relationships in a sedimentary sequence located at the treeline in the Central Spanish Pyrenees. Pollen, macro- and micro-charcoal were analysed for the identification of fire events (FE) in order to detect vegetation post-fire response and to define biomass–fire interactions. mean fire intervals (mfi) reduced since the Lateglacial, peaking at 9–7.7 cal ka BP while from 7.7 to 6 cal ka BP no fire is recorded. We hypothesise that Early Holocene maximum summer insolation, as climate forcing, and mesophyte forest expansion, as a fuel-creating factor, were responsible for accelerating fire occurrence in the Central Pyrenees treeline. We also found that fire had long-lasting negative effects on most of the treeline plant communities and that forest contraction from 7.7 cal ka BP is likely linked to the ecosystem's threshold response to high fire frequencies.

© 2014 Elsevier B.V. All rights reserved.

1. Introduction

Fire is a well-known transforming agent of the Earth system that, while well studied across different spatial scales, is best understood at short-term temporal scales. Fire occurrence is determined by a range of factors that interact dynamically, such as climate, fuel availability and flammability, landscape structure, amongst others, defining fire regimes. Sensitive ecosystems to the current global environmental change experience fire regime changes which are often responsible for deep modifications of their biodiversity and resilience patterns (Bond and Keeley, 2005). This could be the case for mountain ranges, which have been spotlighted as one of the most endangered continental ecosystems because of their high levels of plant endemism (Médail and Quézel, 1999) and their particular sensitivity to global change (Engler et al., 2011; Gottfried et al., 2012). Assessing the potential ecosystem

transformations caused by future changes in fire regime at mountain ranges requires a comprehensive knowledge of their long-term fire ecology (Tinner et al., 1999; Gobet et al., 2003; Tinner et al., 2005; Stähli et al., 2006). Thus, changes in fire regimes at centennial to millennial time-scales have been thoroughly documented in the Alps (Tinner and Lotter, 2001; Stähli et al., 2006; Colombaroli et al., 2009; Blarquez and Carcaillet, 2010; Colombaroli et al., 2010) and at lower altitudes of the Northern Pyrenees (Rius et al., 2009, 2011a,b). In the Iberian Peninsula, past fire histories and vegetation responses have been explored in the Mediterranean area (Carrión, 2002; Carrión et al., 2004; Carrión-Marco, 2005; Franco Múgica et al., 2005; Carrión et al., 2007; López-Merino et al., 2009; Carrión et al., 2010a,b; Gil-Romera et al., 2010; Jiménez-Moreno et al., 2013), and in the Eurosiberian region of the Iberian Peninsula (Carrión-Marco et al., 2010; Kaal et al., 2011; López-Merino et al., 2012; Morales-Molino et al., 2013). However, the Iberian investigations are focused on regional fire activity, through examination of micro-charcoal records so they do not tackle locally-occurred fire events due to the absence of contiguous macro-charcoal datasets, thus precluding the estimation of fire frequencies or return intervals

[☆] Taxa nomenclature is based on Castroviejo et al. (1986).

* Corresponding author.

E-mail address: graciela.gil@ipe.csic.es (G. Gil-Romera).

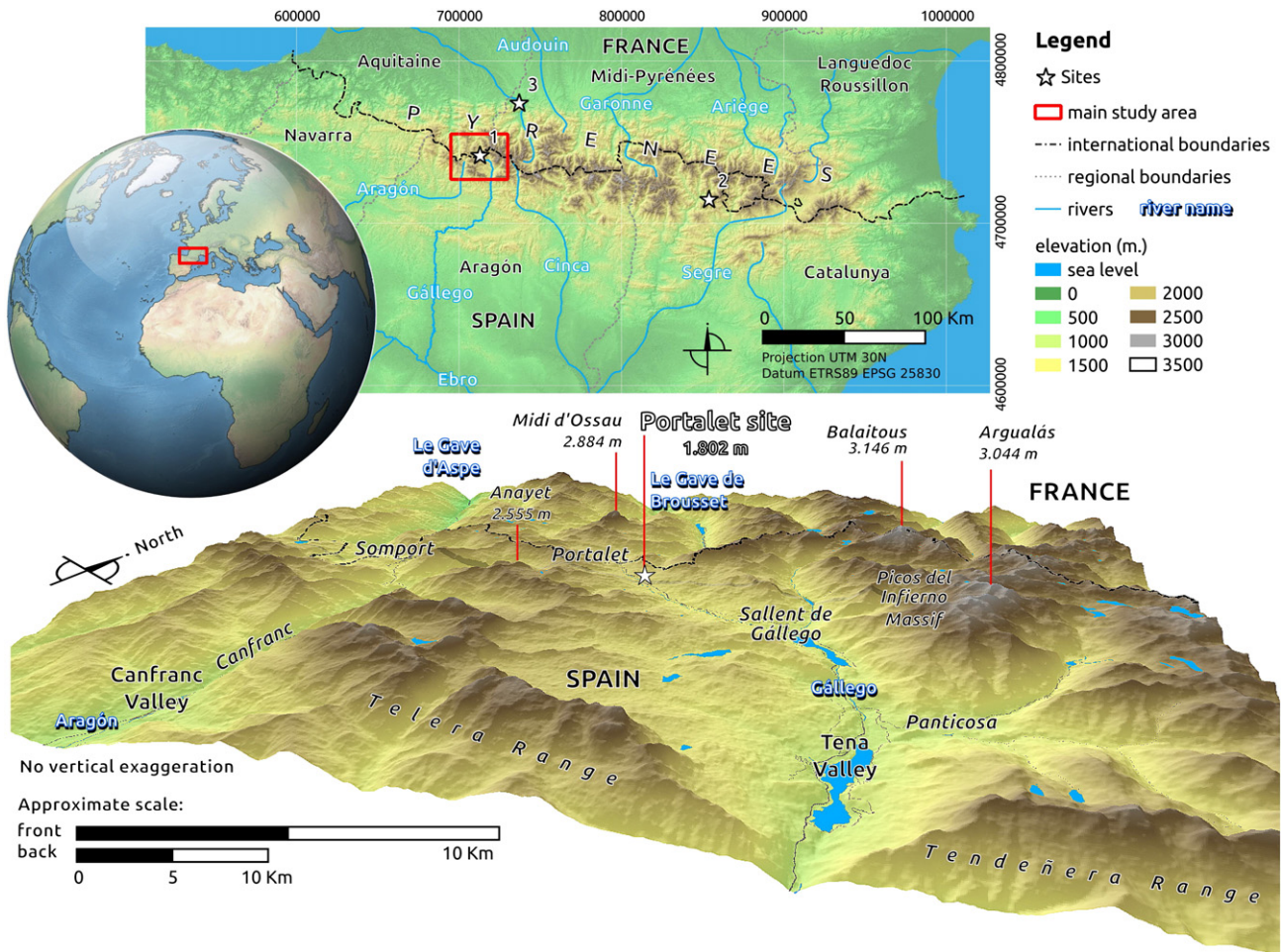


Fig. 1. Digital elevation model of the western-central Southern Pyrenees. Sites mentioned in the text: 1) El Portalet, 2) Estany de Burg, 3) Col d'Ech.

(Power et al., 2008; Whitlock et al., 2010a,b). Studies addressing long-term local fire events have been barely carried out in the Iberian Peninsula, and they do not investigate the climate–fire–biomass relationships or the ecosystem response to fire, as the record of Estany de Burg (Fig. 1) (Bal et al., 2011).

The study presented here is focused on the long-term fire ecology of a fuel-limited alpine site located at the Central Spanish Pyrenees, El Portalet, where a previous palynological analysis described a sequence of environmental changes with high sensitivity to abrupt climate fluctuations since the Lateglacial (González-Sampérez et al., 2006). Our objectives are to 1) analyse the Lateglacial to Mid-Holocene (ca. 14.7–6 cal ka BP) interactions amongst the different agents determining fire occurrence, i.e. climate and fuel availability, in a fuel-limited environment, and 2) determine long-term plant responses and ecosystem resilience to fire disturbance.

2. Material and methods

2.1. Study area

El Portalet site (1802 m asl) is located in the Central-western Pyrenees (Fig. 1), lying on Devonian and Carboniferous shales and limestones. The site is currently a peatland situated within a small glacial cirque. Climate is alpine, with high rainfall (mean annual precipitation ca. 1800 mm) mainly linked to the activity of Atlantic fronts. Annual mean air temperature is 5 °C and daily temperatures are below 0 °C for more than 200 days along the year while mean summer temperature is ca. 12 °C (AEMET-IM, 2011).

The area is currently devoid of woody vegetation, presenting some bushed spots formed by *Vaccinium myrtillus* and mixed pasture–alpine grasslands (Fig. 2) probably established during the Middle Ages, when intense deforestation was regularly practised due to pastoral and slash-and-burn activities (Montserrat, 1992). However, the closest west-to-east valleys (Fig. 2) present *Pinus sylvestris* and *Pinus uncinata* communities reaching the treeline (between 1500 and 1800 m asl), with a mixed scrubland formed by *Juniperus* (*Juniperus communis* ssp. *alpina*, *Juniperus communis* ssp. *hemisphaerica*) and by *Buxus sempervirens* at lower altitudes. *Abies alba* and *Fagus sylvatica* mixed forest appear in shady slopes between 1500 and 1700 m asl. Mixed temperate forests formed by a variety of mesophytes (*Corylus*, *Acer*, *Salix*, *Fraxinus*, etc.) can be found at lower altitudes (1500 to 1600 m asl), often confined to riparian environments. *Betula* communities (*Betula pendula* and some remnants of *Betula nana*) are present at different altitudes, forming disperse forests, sheltered in areas controlled by moisture availability and reduced sun exposure. Evergreen and semi-deciduous *Quercus* (*Quercus ilex* ssp. *ballota* and *Quercus faginea*) become abundant below 1500 m asl, where the latter prefers cooler and wetter locations.

2.2. Chronological framework and sampling resolution

El Portalet age-depth model was constructed from 13 radiocarbon dates obtained from pollen concentrates and a wood fragment, along a 6.08 m long core, recording a time-span between ca. 32 and 5.5 cal ka BP (González-Sampérez et al., 2006). The analyses in this new study have been performed between 14.7–12.5 cal ka BP (470–382 cm) and 10–6 cal ka BP (364–160 cm), the sections with higher and relatively

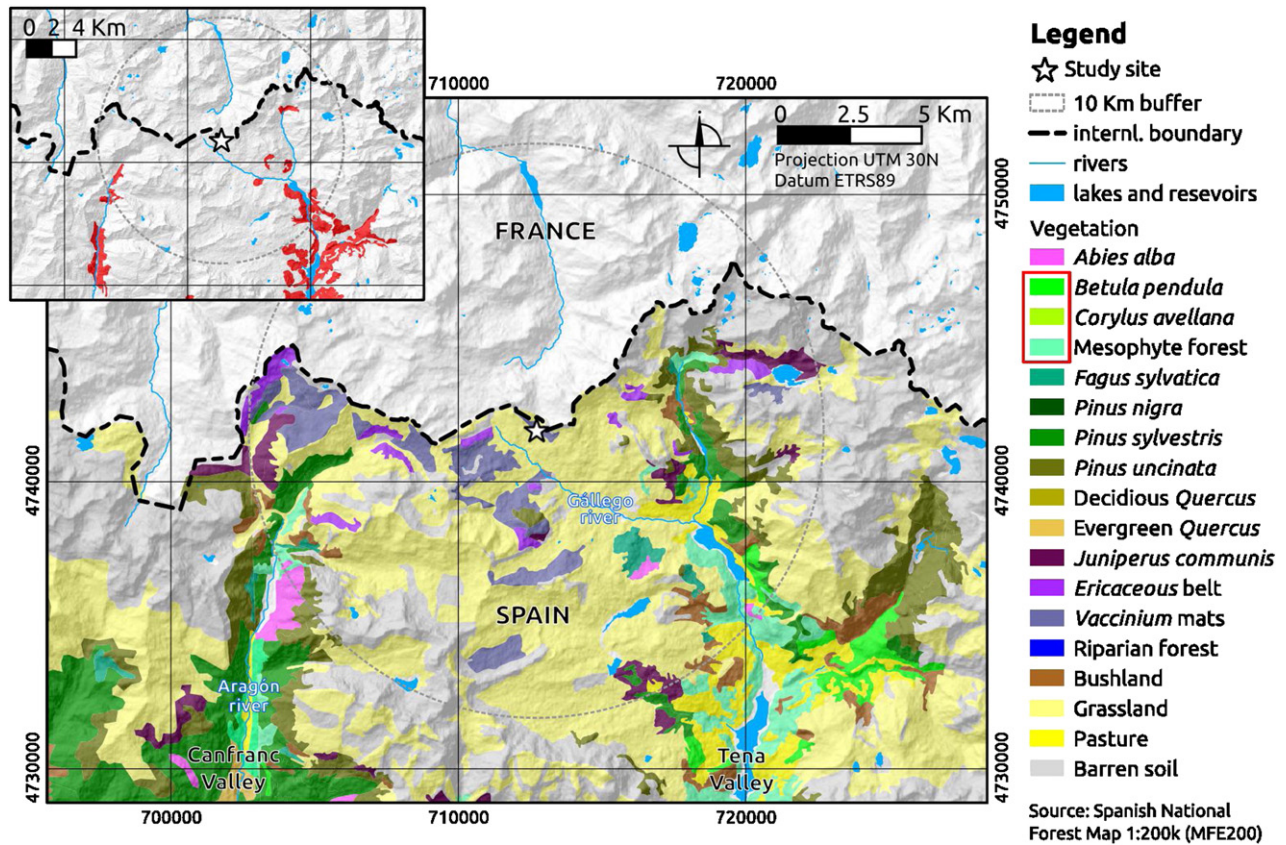


Fig. 2. Vegetation map of the principal plant communities of the western-central Spanish Pyrenees. The upper panel displays in red the mesophyte forest, including *Betula* and *Corylus* distributions in the area. See Supplementary data in Supporting Information for taxa included in the different groups.

constant sedimentation rates (Table 1) and that provide examples of different climates and biomass availabilities. The criterion to select these intervals is based on sedimentation issues, as the 382–364 cm interval (ca. 12.5 and 10 cal ka BP) corresponds to a period of abrupt changes in the sedimentation rate, with some missing cm of sediments, including some possible hiatuses during the Younger Dryas stadial (Table 1) (García-Ruiz et al., 2003; González-Sampériz et al., 2006).

Different sampling resolution was applied for the pollen analysis of the two selected sections. The Holocene section (10–6 cal ka BP), with sedimentation rate ca. 15 yr cm⁻¹ (Table 1), enabled a high-resolution approach. Pollen, micro-charcoal (between 10 µm and 150 µm) and macro-charcoal (particles > 150 µm) particles were studied from contiguously taken samples (1 cm), permitting time-series analyses and cross-correlation amongst the three proxies. The Lateglacial section (14.7–12.5 cal ka BP), with a sedimentation rate ca. 24 yr cm⁻¹, was contiguously sampled for macro-charcoal analyses (1 cm), and every 2 to 5 cm for pollen and micro-charcoal content (Table 1).

In this new study, a total of 292 samples were analysed for macro-charcoal, from which 235 were used for micro-charcoal and pollen

analyses. The 2006 study was limited to 100 pollen samples for this period, and both micro- and macro-charcoal were not counted (14.7–12.5 and 10–6 cal ka BP).

2.3. Laboratory methods

2.3.1. Charcoal analyses

Sedimentary macro-charcoal particles (> 150 µm) have been proved to be a good indicator of past local fire events (FE) at different time scales (Clark and Royall, 1996; Clark et al., 1996; Whitlock and Larsen, 2002; Higuera et al., 2010). Estimating mean fire intervals (MFI) implies detecting local FE from macro-charcoal particles (> 150 µm) (see discussion in Whitlock and Larsen, 2002). Thus, macro-charcoal particles were chemically processed and sieved at 150 µm mesh and retrieved particles were counted on a binocular microscope (× 40). Charcoal identification was accomplished according to existing literature, counting opaque, angular particles (Clark et al., 1996; Tinner and Hu, 2003; Turner et al., 2004; Finsinger and Tinner, 2005). Micro-charcoal particles (> 10 µm) were counted on pollen slides under an optical microscope (× 250)

Table 1
Criteria used for the selection of different core sections and analyses carried out in each of them.

Depth (cm)	Age (cal kyr BP)	Analysis	Criteria
60–160	5 to 6	No analyses	Peatland to lake transition; different environmental settings for charcoal deposition
160–364	6 to 10	High resolution pollen, micro- and macro-charcoal (1 cm ³ , every 1 cm)	Sedimentation rate meets the demands for decomposition of time series and peak-fire detection (15 yr/cm)
364–381	10 to 11.5	No analyses	Sedimentation rate too low in the very few available samples
381–382	11.5 to 12.5	No analyses	Possible hiatus corresponding to the Younger Dryas
382–471	12.5–14.7	Pollen and micro-charcoal every 2–5 cm, macro-charcoal every 1 cm	Sedimentation rate is high enough (24 yr/cm) fitting the required for peak-fire detection while pollen analysis was performed in the available samples from the original core
471–608	14.7–32	No analyses	Glacial influence and low presence of potentially local taxa were not suitable for the proposed objectives.

being a proxy for regional fire activity. More details on laboratory methods can be followed in Supplementary data.

Micro- and macro-charcoal concentrations (charcoal particles cm^{-3}) were transformed into accumulation rates (particles $\text{cm}^{-3} \text{yr}^{-1}$). The macro-charcoal accumulation rate is referred as CHAR hereafter.

2.3.2. Pollen analysis

Palynological samples were chemically treated and a minimum of 300 terrestrial pollen grains were counted. Some of the samples displayed low counts (minimum = 215, maximum = 560, mean = 402.84, STD = 106.7), excluding the pollen sum spores, hydro- and hygrophyte pollen types, which were expressed in abundance (%). Mesophytes, other trees, shrubs and herb pollen types were grouped for representation and data analysis purposes. See Supplementary data for more details.

No plant macro-remains have been found in El Portalet sequence, and therefore fossil pollen is our only proxy for vegetation change.

2.4. Data analyses

2.4.1. Fire events (FE) and mean fire intervals (MFI)

Identifying FE – one or several fires occurring within the time resolution of a sample in a core (Whitlock and Larsen, 2002; Higuera et al., 2010) – implies isolating charcoal peaks equivalent to the signal related to local fire occurrence (Carcaillet et al., 2001; Lynch et al., 2002; Gavin et al., 2006). Peak identification was performed using CharAnalysis (Higuera et al., 2009). MFI for particular periods are calculated as the age between the first and the last fire event divided by the number of fire intervals in that period. Fire frequencies (FF, number of fires/time unit) have been estimated every 500 years. See more details on methods in Supplementary data.

2.4.2. Vegetation dynamics: numerical approach

Pollen assemblage zones and diagram plotting were performed with software Psimpoll 4.27 (Bennett, 2009). Palynological richness was estimated by rarefaction analysis, implemented in the open software Analytic Rarefaction 2.0, and Spearman's R correlation with different taxa and group of taxa was performed to check whether richness is led by any of them. These were done in R v. 2.0.5 (R Core Team, 2012).

Cross-correlation analyses between CHAR and those pollen taxa with expected fire interactions following the ecological literature (Paula et al., 2009) were performed to explore the effect of biomass accumulation on fire occurrence and the potential feedbacks between local wildfire and vegetation response. Thus, 235 samples (corresponding to the 10–6 cal ka BP section) analysed at the same time resolution for pollen and macro-charcoal were used after potential trends were removed by linearly detrending both data series (Colombaroli et al., 2007, 2008; Blarquez and Carcaillet, 2010). CHAR was cross-correlated to pollen percentages as a way to control potential common trends in sedimentation rates, avoiding potential spurious correlations (Tinner et al., 1999). Cross-correlation coefficients were calculated at ± 10 lags corresponding to ± 150 years (each lag corresponds to the mean time difference between two adjacent samples, i.e. 15 years for the Holocene section of the record). Negative lags represent the effect of the second variable (taxa abundance) over the first (CHAR) while positive lags are a measure of the influence of the first variable (CHAR) over the second (taxa abundance). Cross-correlation analyses were completed with the package TSA of R v. 2.0.5 (R Core Team, 2012). There is more related information in Supplementary data.

3. Results and discussion

We interpret the Lateglacial and Holocene fire dynamics in El Portalet (Fig. 3) as naturally produced, with lightning as the main ignition source as it happens currently in high altitude areas of the Pyrenees (Amatulli et al., 2007). Neither evidence of human indicators appeared

in the pollen assemblages at the studied period, nor archaeological sites are present in the area. Magdalenian, Azilian or Mesolithic settlements at the subalpine belt have not been found. Some trans-Pyrenean migratory routes existed in the area, but they were located in lowland natural passes (Utrilla and Rodanés, 1997; Utrilla and Montes, 2007).

3.1. Climate–biomass–fire interactions at the Central Pyrenees: wetter is better

Macro-charcoal analyses resulted in the identification of eighteen FE, most of them (seventeen) occurred between 13.7–12.5 and 9.8–7.7 cal ka BP (Fig. 3B), whereas a single FE appears at ca. 14.6 cal ka BP. Between 7.7 and 6 cal ka BP there was very low to nil macro-charcoal counts and no fire episodes were detected (Fig. 3A). MFI decreased from ca. 314 years during the Lateglacial (14.7–12.5 cal ka BP) to 190 years during the Early–Mid-Holocene (9.8–7.7 cal ka BP (Fig. 3A)).

Unlike the Mediterranean ecosystems, where fire regimes have played an important role in shaping the plant landscape before and after human presence (Keeley et al., 2012 and quotes herein), the high altitude plant communities of the Pyrenees are not usually exposed to high wildfire frequencies (Amatulli et al., 2007). Hence, the MFIs found at El Portalet (between ca. 190 and 314 years) (Figs. 3 and 4) point to the low frequency of natural wildfire occurrence, which agrees with present-day fire frequency in the high altitude areas of the Pyrenees, where virtually no natural fire has been recorded from 1974 and 2000 (Vázquez de la Cueva et al., 2006). Despite general low frequencies for the period analysed, a clear pattern on wildfire behaviour in El Portalet is detected as MFIs reduced since the Lateglacial to the Early–Mid-Holocene. Similarly, lower fire activities during the Lateglacial than during the Early Holocene have been reported in several Northern Hemisphere sites (Power et al., 2008; Higuera et al., 2009, 2011; Carcaillet et al., 2012) and particularly in high-altitude European mountain sites (Tinner and Lotter, 2001; Tinner et al., 2005; Vescovi et al., 2007; Feurdean et al., 2012), where climate was colder and drier during this time compared to the Holocene. Changes in temperature during the Lateglacial did not play a significant role in MFI variability. The nearest chironomid-derived palaeotemperature curve in the Col d'Ech Northern Pyrenees site (700 m asl, Fig. 1, Lourdes Basin, France) (Millet et al., 2012), shows an important increase in temperature of ca. 2 °C at ca. 14.7 cal ka BP, coeval with the Bølling onset. Likewise, the also chironomid-inferred palaeotemperature from Laguna de la Roya (NW Spain) (Muñoz Sobrino et al., 2013) indicates an increase of 2.5 °C during the Bølling. This thermic rise did not apparently promote large wildfire ignition in El Portalet, with a single FE recorded (Fig. 4). On the one hand, it is possible that the temperature rise during this period would have been gradual rather than abrupt as has been found for the Mediterranean Sea (Cacho et al., 2001) and continental Iberia (Moreno et al., 2012), where maximum temperature values were identified during the Allerød (Fig. 4). Considering the complex Lateglacial Interstadial palaeoclimate scenario and El Portalet's altitude (1800 m asl), we argue that the gradual increase in temperature during the Bølling, with both cool summer – with still reduced summer solar insolation (Fig. 4) – and extreme winter temperatures, could explain the low fire frequency between 14.6 and 13.9 cal ka BP. Afterwards, during the warmer intervals GI-1c (13.9–13.3 cal ka BP) and GI-1a (13.1–12.9 cal ka BP) (Lowe et al., 2008), and as summer temperature progressively increased during the Allerød, fire frequency increased (Fig. 4), supporting the climatically driven character of these fires. Similarly, and somehow coeval with the more frequent warm episodes within the Allerød (Fig. 4), FE in El Portalet area modestly increased ca. 13.5 cal ka BP from 2 to 3 fires per 500 years, and similarly regional fire activity was moderately enhanced as indicated by micro-charcoal influx (Fig. 5).

Regardless of the climate setting during this period, vegetation in El Portalet between the Bølling (GI-1e) and part of the GI-1c events

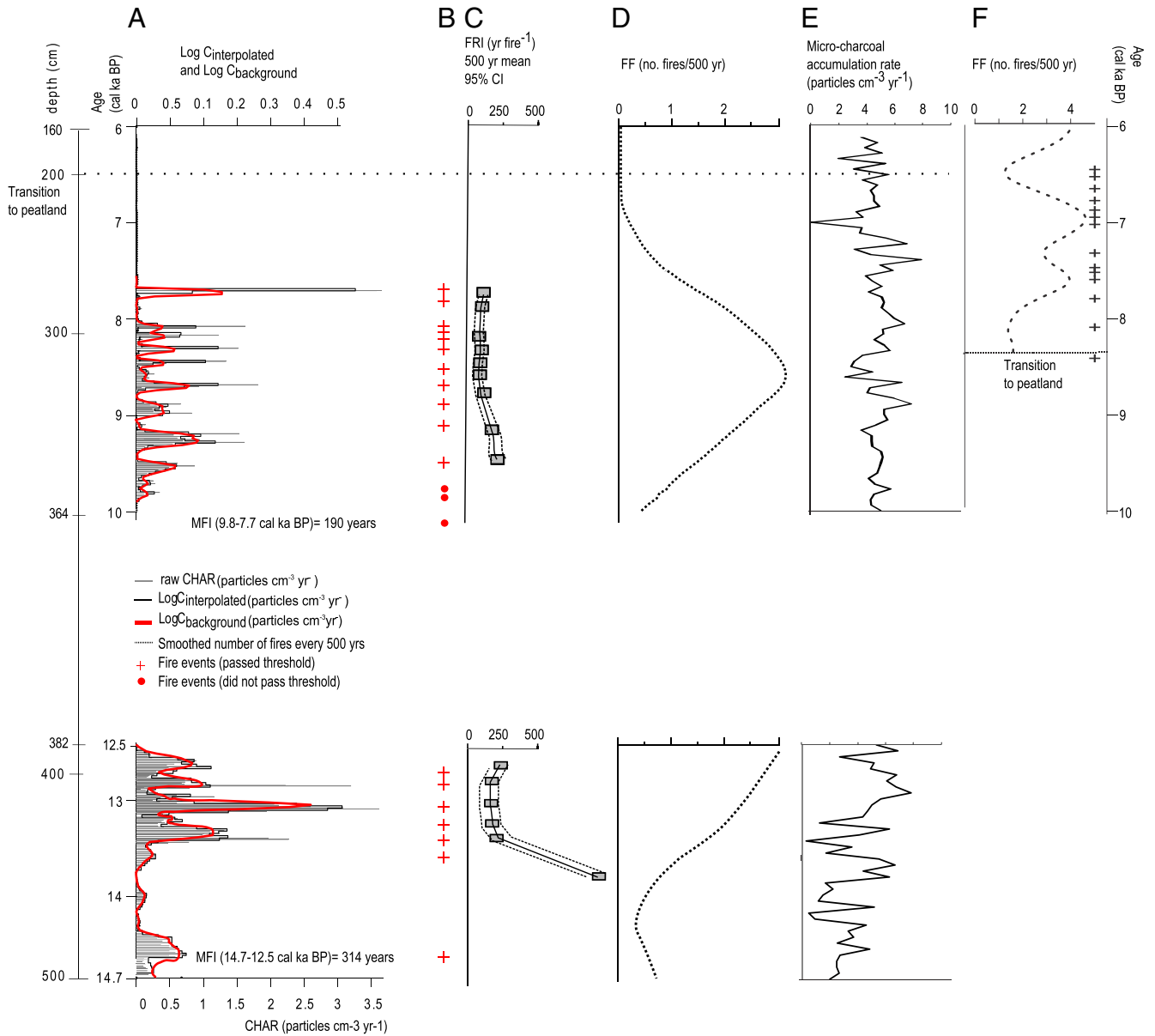


Fig. 3. A) Raw charcoal accumulation rate values (CHAR) (grey bars); transformed Log C interpolated (variance stabilisation is achieved by log-transforming C interpolated series into Log C interpolated) (solid black line); Log C background (detrending Log C interpolated resulted in background charcoal (Log C background) (red line). B) Fire events (FE) (red crosses) and detected fire peaks that did not pass the threshold for FE (red dots). C) Fire return intervals (FRI) for the two studied periods, expressed as years between fire events. D) Fire frequency (FF) every 500 years. E) Microcharcoal-accumulation rate. No samples were analysed between 364 and 382 cm – more details are given in the text. F) Fire frequency (FF) every 500 years and fire events (FE) (black crosses) at Col d'Ech (site 3 in Fig. 1) during the Holocene period concurrent with our site. See more details on the methods in the Supporting Information.

(ca. 14.6–13–6 cal kyr BP) (Fig. 4) was regionally dominated by pines, most likely Scots and mountain pines (*Pinus sylvestris* and *Pinus uncinata* respectively), while local vegetation was probably composed of less pollen productive types as junipers, most likely *Juniperus communis* ssp. *alpina* and *J. communis* ssp. *hemisphaerica*, and patchy grasslands of Poaceae, *Artemisia* and Chenopodiaceae (Fig. 5), pine forests would probably have provided enough fuel for regional fires to happen while the local sparse vegetation would not have represented an important and well-connected biomass to feed local fires, despite relatively warmer conditions.

The mesophyte forest developed to unprecedented extensions from 13.5 cal ka BP, during the latest Allerød warm phase (González-Sampériz et al., 2006) (Fig. 5). The rising temperatures and still likely high amounts of winter precipitation at a regional scale (Genty et al., 2006; Morellón et al., 2009; Moreno et al., 2010) probably favoured

temperate, drought-intolerant communities during this time in El Portalet and this is a well-documented pattern across European sites and in some other Iberian records (Carrión et al., 2004; Fletcher et al., 2010; López-Merino et al., 2012). The location of our site in a south-facing, less steep slopes of the Central Spanish Pyrenees, would have promoted the faster upwards migration of birch forests from its lowland locations when conditions improved. We suggest that since ca. 13.5 cal ka BP, El Portalet held locally dense mesophyte communities formed by dwarf birches (*Betula alba* ssp. *nana*) similar to those currently present in the nearby valleys at the same altitude (Fig. 2). Birch at El Portalet Lateglacial landscapes would have played a pioneer role as it is a well-dispersing tree in poor, oligotrophic soils and its heliophytic character favours its development at early successional stages. Interestingly, intensified fire frequencies from 13.5 cal ka BP concurs with expanding moisture-demanding communities, which may seem a

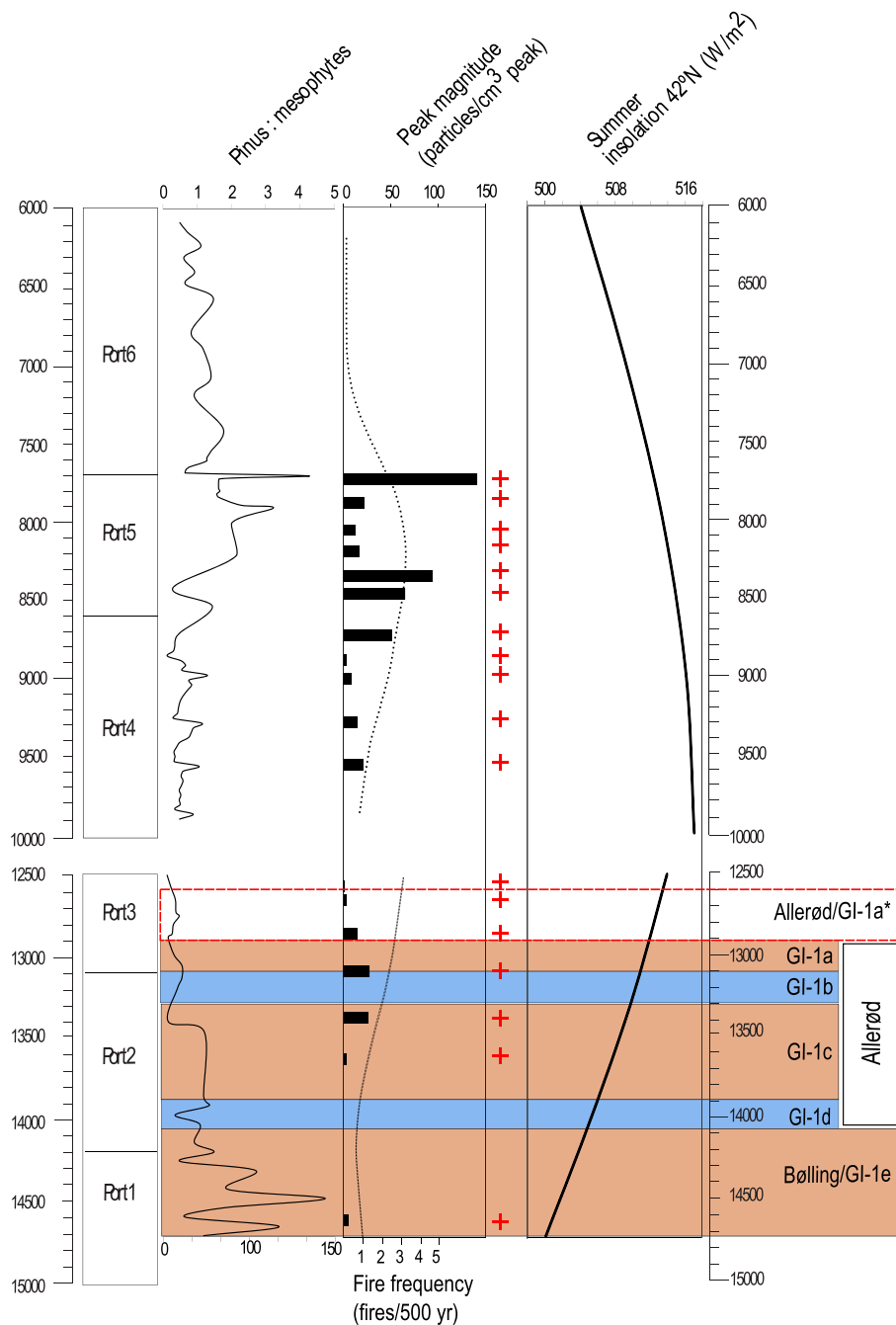


Fig. 4. *Pinus*:mesophyte ratio plotted against local fire occurrence (fire frequency and peak magnitude) and July summer insolation (42°N) (Laskar, 2004) in an age scale. Chronology from Lateglacial climate events are defined after Lowe et al. (2008) except for the Allerød warm event as El Portalet pollen and sedimentary signals found in González-Sampérez et al. (2006), marked as *Allerød/GI-1a** with a dotted-line box in this figure, do not chronologically agree with the recent chronology presented in Lowe et al. (2008).

counterintuitive idea as wetter environments would prevent large wild-fires. However, these conditions induce a major biomass production (Clark et al., 1989; Daniou et al., 2007; Power et al., 2013) facilitating the expansion of mesophytic communities that grow faster than conifers (Blarquez and Carcaillet, 2010), and creating a remarkable cover of flammable fuel necessary for intense wildfires (Krawchuk and Moritz, 2010). This controlling role of a particular forest composition on local fire could be even more patent during the Early Holocene in El Portalet.

Fire frequencies varied from 1 fire per 500 years at 9.8–9 cal ka BP, to 3 fires per 500 years at 9–7.7 cal ka BP (Figs. 3C and 4) and the *Pinus*:

mesophytes ratio varying drastically (Fig. 4). Climatically, the Early Holocene in the Mediterranean region was marked by wetter and warmer conditions than in Lateglacial times (Cacho et al., 2002; Roberts et al., 2004), which in El Portalet stimulated the continuous development of mesic forests (González-Sampérez et al., 2006) (Fig. 5). Accordingly, vegetation landscapes in El Portalet became then even more biomass-rich than during the Allerød period, as a denser *Corylus*-dominated shrubland spread synchronous with the rise in temperature, followed by a new expansion of *Betula* ca. 9.3 cal ka BP. Thus, increasing fire frequencies between 9 and 7.7 cal ka BP would most likely have been driven by the mesophyte expansion (Figs. 4 and 5).

El Portalet
1802 masl

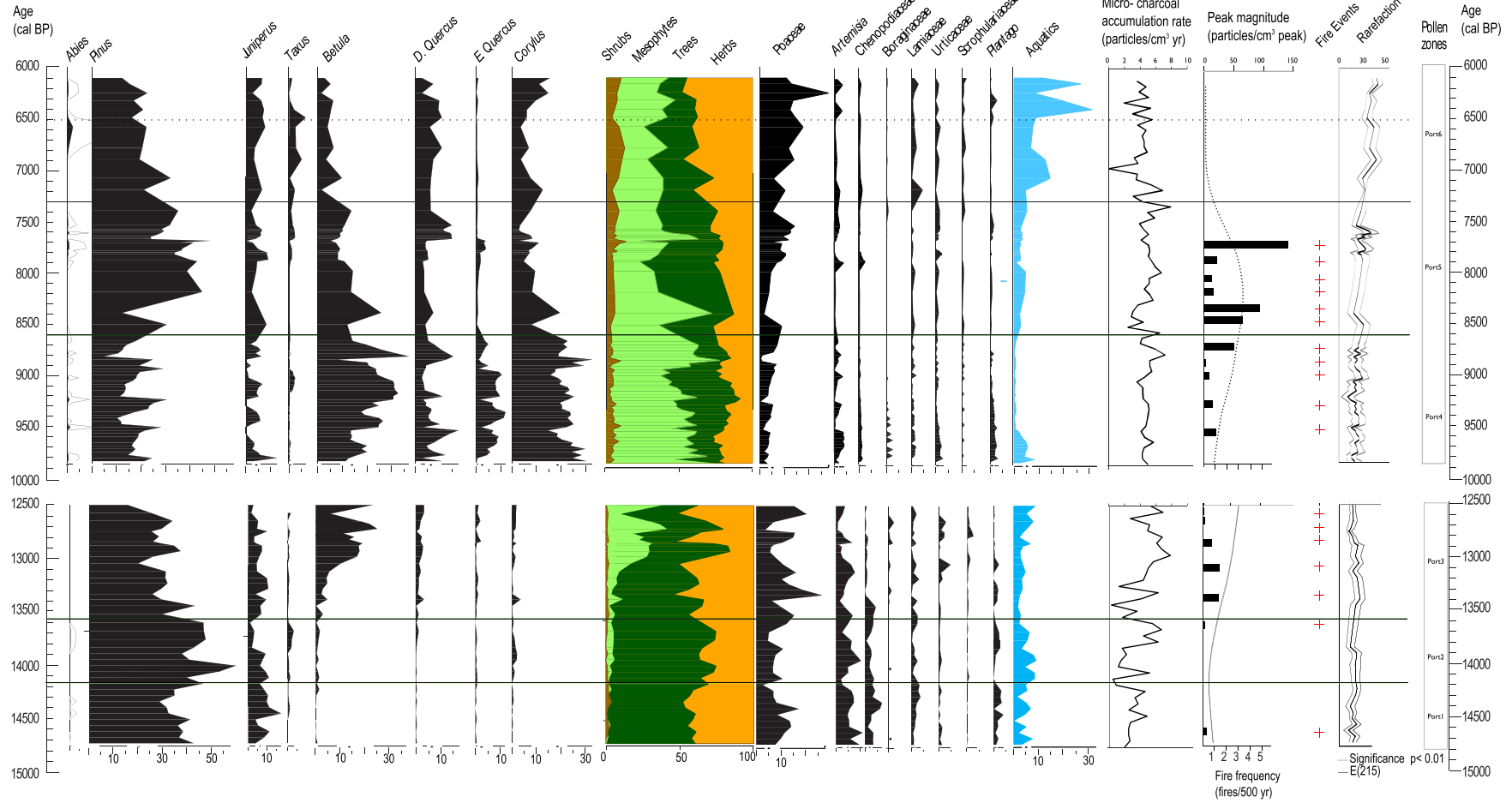


Fig. 5. Synthetic pollen diagram with relevant selected taxa. Pollen values are abundances (%) represented as filled black areas. Fire activity is characterised by micro-charcoal area concentration, and local fire events are represented by red crosses. Palynological richness is represented with confidence intervals and measured in number of taxa. See Supplementary data for taxa included in the different groups.

Mesophytic biomass control of fire frequency during the Holocene is supported by cross-correlation results (Fig. 6), where birch and other mesophytes, as well as total tree percentages, have a positive effect on local wildfire at different lags from 150 years before fire occurrence. Bushes and herbs are, unsurprisingly, negatively affecting fire occurrence as they prevent large wildfires in a less connected landscape. Regarding trees, the major effect of mesic communities on local fire responds to the biomass accumulated from 120 to 30 years prior to a fire event (mesophyte cross-correlation, Fig. 6). Our results are coherent with a recent study by Pausas and Paula (2012) on the present role of plant productivity, community structure and climate–fire relationships

on fire dynamics in the Iberian Peninsula. These authors showed that differences in fire activity across an aridity gradient are not linked to the frequency of fire-prone climate conditions but by the vegetation sensitivity to fire under those conditions, which became higher in wetter and more productive regions. Conversely, herbs and shrubs are negatively affecting fire ignition in El Portalet (Fig. 6), reinforcing the hypothesis of more likely wildfire incidence at dense, encroached temperate forests. Indeed, pine presence does not seem to positively influence fire occurrence, reflecting either the less flammable character of *Pinus uncinata*/*Pinus sylvestris* stands than *Betula* (Tapias et al., 2004; Fernandes et al., 2008), or a forest structure with relatively thin pine

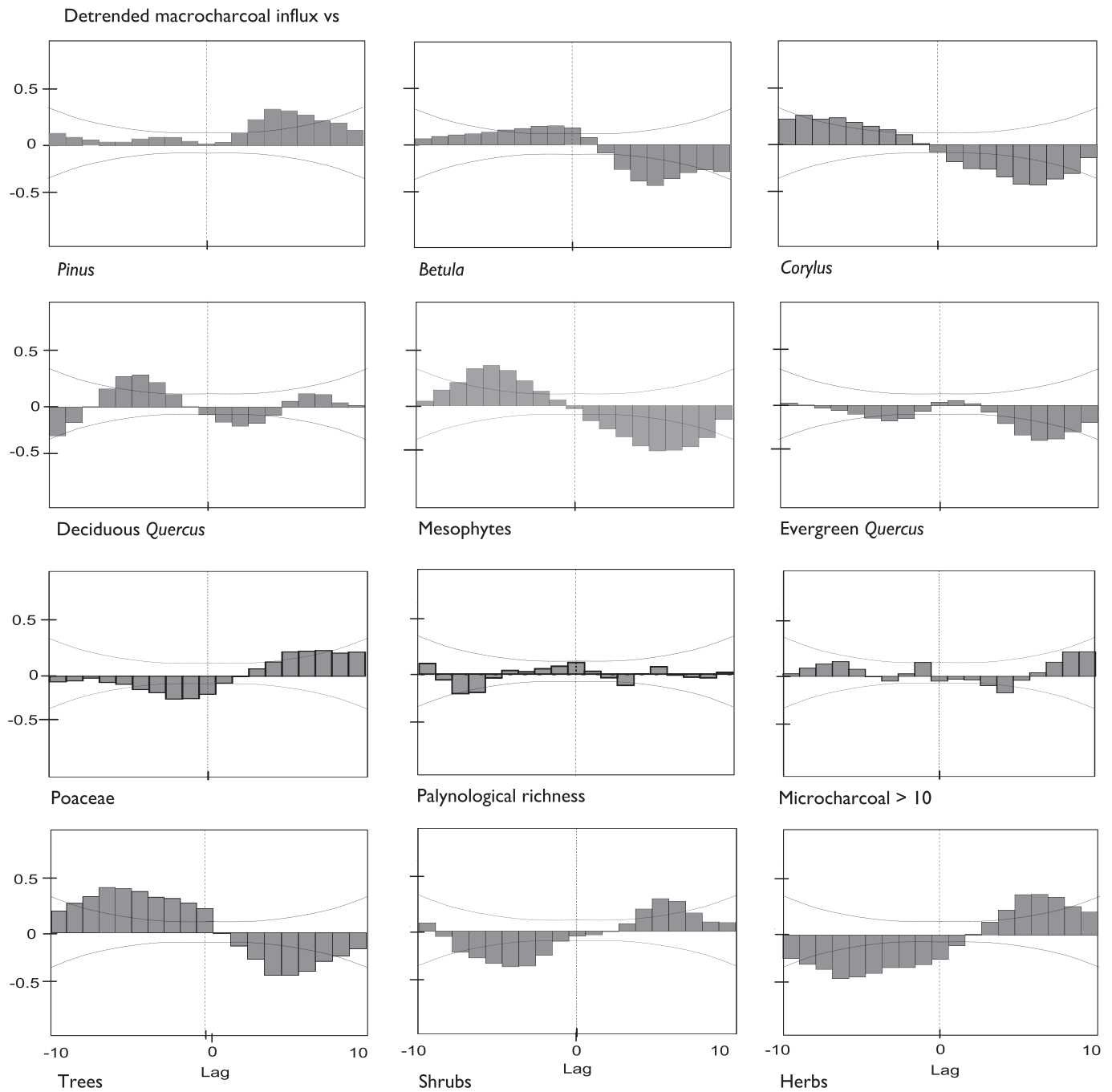


Fig. 6. Cross-correlograms of detrended macro-charcoal influx versus detrended pollen percentages for the 6–10 kyr BP period. Every lag corresponds to the average time difference between two adjacent samples, both containing pollen and charcoal (15 yr cm^{-1}). Lag 0 is the ordinary linear correlation coefficient between two variables at a particular time. Positive lags measure the influence of the first variable on the second, i.e., how charcoal affects pollen, after a particular time lag; negative lags measure the influence of the second variable (pollen) on the first (charcoal) with reference to the lag. Dotted lines correspond to the significance level $p < 0.05$.

woodlands and young stands with no significant ageing processes, both preventing large, more frequent fires.

The Early to Mid-Holocene transition reflects a sharp decline in local fire activity and after 7.7 cal ka BP no fire is recorded. We postulate that relatively humid conditions could have partially prevented fire occurrence, while the gradual contraction of tree cover probably yielded less effective fuel to be burnt precluding large local wildfires. Summer insolation decreased during the Early to Mid-Holocene transition, favouring relatively cooler summers and milder winters (Webb et al., 1993). Regional indicators of moisture availability are less clear, and while some Northern Mediterranean and Northern European records showed drier conditions (Magny et al., 2003; Roberts et al., 2004), nearer sequences indicate a regional increase in water availability (Morellón et al., 2008; Pérez-Sanz et al., 2013; Aranbarri et al., 2014).

The Holocene decrease of local FE does not find a counterpart in El Portalet regional fire activity, as micro-charcoal is still recorded along the sequence (Fig. 5), proving that charcoal sources might not be associated. The vegetation–regional fire relationships should be cautiously taken though, as pollen and micro-charcoal may have different source areas difficult to identify. Some experiments trying to overcome this issue proved that charcoal particles <50 µm are likely deposited from 10 to 15 km away from a 200 m diameter lake (Duffin et al., 2008). The original surface area of El Portalet lake is unknown but the current peatland diameter is over 200 m, and the whole basin is not much larger (15 ha), and micro-charcoal source area most likely exceeds 10 km, implying fire happening in the lowlands, where active burning might still have occurred. Relevant source area for pollen, as well as its productivity, are unidentified; however, the immediate response of some taxa (*Pinus*, *Juniperus*, and *Betula*) to local fire occurrence indicates a local to sub-regional pollen input (<10 km) with some regional contribution, particularly from those highly productive and well-dispersed taxa such as *Pinus*.

Considering that *Betula* and *Corylus* pollen proportions decreased to less than 15% after 7.7 cal ka BP, we suggest that both taxa locally disappeared and remained only in patched formations at closer valleys and at lower elevations, as they occur nowadays (Fig. 2). These small patches would be located farther away than the 10 km charcoal source area limit and, consequently, they would not contribute to the macro-charcoal input to El Portalet site. Most importantly, this proves that the local sensitivity to fire–climate relationship is mostly mediated by flammable biomass and not only by climate (Pausas and Paula, 2012), as this site would have received a relatively high rainfall amount during the Holocene.

These findings confirm the trends found in other Holocene European records, where fire intensity and frequency are strengthened since the beginning of the Holocene until the Early–Mid-Holocene transition (Tinner et al., 1999; Colombaroli et al., 2007; Vescovi et al., 2007; Feurdean et al., 2012, 2013). However, in the closest Holocene Col d'Ech fire record (Lourdes basin, France, ca. 700 m asl; Rius et al., 2011a,b), a different fire regime pattern is found (Fig. 3F). Despite little temporal overlap with El Portalet, fire activity intensification in the Lourdes basin from 7.8 to 4 cal ka BP is discussed by the authors considering three features: a change in the sedimentation rate (from silt to peat ca. 8.2 cal ka BP); an increasing effect of human activity; and progressively warmer summers and flammable-prone conditions due to a lagged effect on temperature of Laurentide ice sheet deglaciation (Renssen et al., 2009). El Portalet presents a change in sedimentation rate much later than Col d'Ech (ca. 6.5 cal ka BP), thus, in our study the lack of fire activity from 7.7 cal ka BP would not be associated with depositional factors. As discussed before, anthropogenically-induced environmental changes are less likely at higher altitudes and, unlike at the Col d'Ech, no evidence of human activity has been documented in the area during the Early Holocene. Mid-Holocene warmer summers (Holocene Thermal Maximum) have been modelled at the Northern hemisphere spatial scale, suggesting that cooler summers than expected due to summer insolation before 7 cal ka BP arose from

a combination of the inhibition of Labrador Sea deep convection by the flux of melt water from the ice sheet, which weakened northward heat transport by the ocean, and the high surface albedo of the ice sheet (Renssen et al., 2009). However, our findings in El Portalet may not fit in this model as the occurrence of a high local fire activity from 9 to 7 cal ka BP in a relatively fuel-limited environment as the Central Spanish Pyrenees treeline, supports the importance of orbital forcing on the mesophyte development (Fig. 5) and the role of the latter in modulating fire activity (Danianu et al., 2007; Power et al., 2011; Pausas and Paula, 2012).

3.2. Vegetation–fire interactions, plant responses to disturbance and ecosystem resilience

The current plant communities at the mid to high altitudes of the Pyrenees do not show any fire trait implying a clear adaptation to fire (Fulé et al., 2008; Montané et al., 2009; Paula et al., 2009). Modern fire frequencies are relatively higher in the Central Pyrenees compared to the MFI found in El Portalet (1 to 5 FE, both wildfire and attempted arsons, for the last 10 years, Spanish Forestry Database (MAGRAMA, 2012)). Hence, it should be considered that FE identified in El Portalet sequence responds to large wildfires, probably implying both crown and surface fires, while current statistics do not distinguish these criteria (size or fire type). It is not surprising then that local wildfires have a long-term negative effect at different time-lags on most studied tree taxa in El Portalet and that taxa favoured by fire are those forming open-landscape communities, as herbs and shrubs, which are also those preventing fire occurrence (Fig. 6). An exception to this pattern is *Pinus*, most likely represented by *Pinus sylvestris*/*Pinus uncinata* in El Portalet, which are not fire-adapted pines, unlike the Mediterranean pines (*Pinus pinaster*, *Pinus pinea*, *Pinus nigra* and *Pinus halepensis*) that are showing serotiny, bark thickness and bud resistance to fire (Fernandes et al., 2008; Paula et al., 2009). Despite some previous studies in the Alps having proved a positive relationship between fire and *P. sylvestris* (Stähli et al., 2006), we suggest that in El Portalet the *Pinus*–fire correlation might be associated with temporal exclusion of *Pinus* competitors, rather than to a direct positive effect of fire over pine occurrence, enabling pine recolonisation from the edge of burnt areas or from sheltered refugia in rocky outcrops (Keeley et al., 2012).

The long-term role of birch in the sub-alpine/alpine belt of the Central Spanish Pyrenees is partially in agreement with its documented early-successional character after disturbances, as revealed by other Holocene sequences (Feurdean and Astalos, 2005; Morales-Molino et al., 2011; Pérez-Sanz et al., 2013) and modern ecology studies on their resprouting ability (Reyes and Casal, 1998). Interestingly, *Betula* in El Portalet is a main factor in building up fuel but its development is negatively affected by fire in the first 150 years after the fire event. This is common with most of the mountain trees, supporting the idea of the alpine ecosystem as a long-term fire-sensitive environment. Indeed it is worth considering that more recurrent fires during the Early–Mid-Holocene transition would have had a long-term impact on the birch development as it is the only mesophyte that clearly decreases from 7.5 cal kyr BP. However, this does not necessarily preclude birch communities from pioneering the treeline recuperation as one amongst the first forestal types able to spread after fires, especially considering that most trees respond negatively to fire (Fig. 6).

Palynological richness (rarefaction index) gradually increased as large wildfires decreased from 7.7 cal ka BP (Fig. 5), and despite its long-term variation, richness does not show any clear pattern linked to local fire occurrence (Fig. 6). A long-term positive fire effect on plant richness has often been argued, especially in those ecosystems where plants present fire-resistant seedbanks (Beckage and Stout, 2000; Johst and Huth, 2005; Montané et al., 2009). However, we argue that El Portalet's increasing palynological richness during the Holocene was not led by fire disturbance, but seems to be a consequence of the tree cover decline and the spread of non-arboreal communities, as

Table 2

Spearman's R of some taxa and group of taxa and palynological richness. Asterisks are significant values at $p < 0.05$.

Taxa or group of taxa	Spearman's R
Trees	−0.42*
Mesophytes	0.27
Shrubs	0.65*
Poaceae	0.34
Herbs	0.83*
Non arboreal (shrub and all herbs)	0.75*
<i>Pinus</i>	−0.20
<i>Betula</i>	−0.32
<i>Corylus</i>	−0.29

semi-open landscapes represent a main driver of palynological richness and show larger diversity than closed forests (Feurdean and Astalos, 2005; Colombaroli and Tinner, 2013). We actually found that the non-arboreal pollen abundance presents a Spearman's $R = 0.75$ ($p < 0.05$) (Table 2) with the rarefaction values for the 10–6 cal ka BP period (Fig. 5), supporting the idea of a richer ecosystem in more open landscapes but not necessarily linked to fire disturbance.

4. Conclusions

The high resolution pollen and charcoal records at El Portalet enabled long-term analyses of fire regime, biomass-mediated fire occurrence and vegetation response to disturbance at the Central Spanish Pyrenees treeline. The main findings of our study are:

Local wildfire frequency varied since the Lateglacial (14.7 cal ka BP) to the Mid-Holocene (6 cal ka BP) at El Portalet, where the mean fire intervals progressively decreased during the fire-active periods, between 13.6–12.5 and 9.8–7.7 cal ka BP.

Variation in fire activity was not linked to human presence in El Portalet but to climate and biomass fluctuations. Mesophyte forest expansion (led by *Betula* and *Corylus* communities), as a fuel-creating factor, triggered increasing fire frequencies in the Central Spanish Pyrenees treeline. Hence, fire regimes in this region proved to be long-term sensitive to insolation changes and biomass abundance.

Fire has long-lasting negative effects on most of the treeline plant communities. These are not currently fire-prone forests, exhibiting no clear fire-trait, and the El Portalet sequence shows that this is a long-term ecological feature of the subalpine/alpine Pyrenees communities.

Forest contraction from 7.7 cal ka BP could be linked to a threshold response of the system to recurrent fire frequencies as climate was not unfavourable for forest development. Palynological richness increased from that time coeval with the openness of the landscape.

Long-term fire ecology has proved to be a useful tool to explore Quaternary fire regime changes, especially in those fire-sensitive ecosystems where changing fire regimes may determine vegetation composition and resilience.

Besides, our findings are relevant under the current and predicted scenarios of global change, as warming would stimulate more frequent fire events in biomass-rich environments and therefore influence environmental resilience vulnerability levels. Interestingly, these results from Quaternary scenarios concur with the local knowledge on current forest management, as both stress the importance of keeping low levels of woody encroachment and promoting traditional forest use in order to prevent fuel accumulation and avoid virulent fires, with catastrophic effects both in this fire-sensitive ecosystem and in the local communities.

Acknowledgements

This research has been funded by the projects DINAMO (CGL2009-07992) (funding EGPF – grant ref. BES-2010-038593 and MSC), DINAMO2 (CGL2012-33063), ARAFIRE (2012 GA LC 064), GRACCIE-

CONSOLIDER (CSD2007-00067). GGR was funded by the Juan de la Cierva Program (grant ref. JCI2009-04345) and JAE-Doc CSIC Program, LLM was supported by a postdoctoral MINT fellowship funded by the Institute for the Environment (Brunel University), AMC is a Ramón y Cajal fellow (ref: RYC-2008-02431), APS holds a grant funded by the Aragon Government (ref. 17030G/5423/480072/14003) and JAE holds a grant funded by the Basque Country Government (BFI-2010-5). We are indebted to Beatriz Bueno and Aida Adsuar for sampling processing and laboratory analyses and to César Morales del Molino for productive discussions on the ideas of this paper. We are grateful to Steven M. Holland for providing the free software to calculate rarefaction (Analytic Rarefaction), which is available at <http://strata.uga.edu/software/>.

References

- AEMET-IM, 2011. Atlas Climático Ibérico. Agencia Estatal de Meteorología Ministerio de Medio Ambiente y Medio Rural y Marino.
- Amatulli, G., Peréz-Cabello, F., de la Riva, J., 2007. Mapping lightning/human-caused wildfires occurrence under ignition point location uncertainty. *Ecol. Model.* 200, 321–333.
- Aranbarri, J., González-Sampérez, P., Valero-Garcés, B., Moreno, A., Gil-Romera, G., Sevilla-Callejo, M., García-Prieto, E., Di Rita, F., Mata, M.P., Morellón, M., Magri, D., Rodríguez-Lázaro, J., Carrión, J.S., 2014. Rapid climatic changes and resilient vegetation during the Lateglacial and Holocene in a continental region of south-western Europe. *Glob. Planet. Chang.* 114, 50–65.
- Bal, M.-C., Pelachs, A., Perez-Obiol, R., Julia, R., Cunill, R., 2011. Fire history and human activities during the last 3300 cal yr BP in Spain's Central Pyrenees: the case of the Estany de Burg. *Palaeogeogr. Palaeoclimatol. Palaeoecol.* 300, 179–190.
- Beckage, B., Stout, I.J., 2000. Effects of repeated burning on species richness in a Florida pine savanna: a test of the intermediate disturbance hypothesis. *J. Veg. Sci.* 11, 113–122.
- Bennett, K., 2009. Documentation for Psimpoll 4.27 and Pscomb 1.03: C Programs for Plotting Pollen Diagrams and Analysing Pollen Data. Queen's University of Belfast, Department of Archaeology and Palaeoecology.
- Blarquez, O., Carcaillet, C., 2010. Fire, fuel composition and resilience threshold in subalpine ecosystem. *PLoS ONE* 5, e12480.
- Bond, W.J., Keeley, J.E., 2005. Fire as a global “herbivore”: the ecology and evolution of flammable ecosystems. *Trends Ecol. Evol.* 20, 387–394.
- Cacho, I., Grimalt, J.O., Canals, M., Sbaifi, L., Shackleton, N.J., Schönfeld, J., Zahn, R., 2001. Variability of the western Mediterranean Sea surface temperature during the last 25,000 years and its connection with the Northern Hemisphere climatic changes. *Paleoceanography* 16, 40–52.
- Cacho, I., Grimalt, J., Canals, M., 2002. Response of the Western Mediterranean Sea to rapid climatic variability during the last 50,000 years: a molecular biomarker approach. *J. Mar. Syst.* 34, 253–272.
- Carcaillet, C., Bergeron, Y., Richard, P.J.H., Frechette, B., Gauthier, S., Prairie, Y.T., 2001. Change of fire frequency in the eastern Canadian boreal forests during the Holocene: does vegetation composition or climate trigger the fire regime? *J. Ecol.* 89, 930–946.
- Carcaillet, C., Hörnberg, G., Zackrisson, O., 2012. Woody vegetation, fuel and fire track the melting of the Scandinavian ice-sheet before 9500 cal yr BP. *Quat. Res.* 540–548.
- Carrión, J.S., 2002. Patterns and processes of Late Quaternary environmental change in a montane region of southwestern Europe. *Quat. Sci. Rev.* 21, 2047–2066.
- Carrión, J.S., Yli, E.I., Willis, K., Sánchez, P., 2004. Holocene forest history of the eastern plateaux in the Segura Mountains (Murcia, Southern Spain). *Rev. Palaeobot. Polynol.* 132, 219–236.
- Carrión, J.S., Fuentes, N., González-Sampérez, P., Sánchez Quirante, L., Finlayson, J.C., Fernández, S., Andrade, A., 2007. Holocene environmental change in a montane region of southern Europe with a long history of human settlement. *Quat. Sci. Rev.* 26, 1455–1475.
- Carrión, J.S., Fernández, S., Jiménez-Moreno, G., Fauquette, S., Gil-Romera, G., González-Sampérez, P., Finlayson, C., 2010a. The historical origins of aridity and vegetation degradation in southeastern Spain. *J. Arid Environ.* 74, 731–736.
- Carrión, J.S., Fernández, S., González-Sampérez, P., Gil-Romera, G., Badal, E., Carrión-Marco, Y., López-Merino, L., López-Sáez, J.A., Fierro, E., Burjachs, F., 2010b. Expected trends and surprises in the Lateglacial and Holocene vegetation history of the Iberian Peninsula and Balearic Islands. *Rev. Palaeobot. Polynol.* 162, 458–475.
- Carrión-Marco, Y., 2005. La vegetación mediterránea y atlántica de la península Ibérica. Nuevas secuencias antracológicas. Servicio de Investigación prehistórica. Diputación provincial de Valencia, Valencia.
- Carrión-Marco, Y., Kaal, J., López-Sáez, J.A., López-Merino, L., Cortizas, A.M., 2010. Holocene vegetation changes in NW Iberia revealed by anthracological and palynological records from a colluvial soil. *The Holocene* 20, 53–66.
- Castroviejo, S. (Coord) (1986). Flora Iberica (Madrid: Real Jardín Botánico, CSIC).
- Clark, J.S., Royall, P.D., 1996. Local and regional sediment charcoal evidence for fire regimes in presettlement north-eastern North America. *J. Ecol.* 84, 365–382.
- Clark, J.S., Merkt, J., Muller, H., 1989. Post-Glacial fire, vegetation, and human history on the northern alpine forelands, south-western Germany. *J. Ecol.* 77, 897–925.
- Clark, J.S., Royall, P.D., Chumbley, C., 1996. The role of fire during climate change in an eastern deciduous forest at Devil's Bathtub, New York. *Ecol. Evol.* 77, 2148–2166.
- Colombaroli, D., Tinner, W., 2013. Determining the long-term changes in biodiversity and provisioning services along a transect from Central Europe to the Mediterranean. *The Holocene* 23, 1625–1634.

- Colombaroli, D., Marchetto, A., Tinner, W., 2007. Long-term interactions between Mediterranean climate, vegetation and fire regime at Lago di Massaciuccoli (Tuscany, Italy). *J. Ecol.* 95, 755–770.
- Colombaroli, D., Vanniere, B., Emmanuel, C., Magny, M., Tinner, W., 2008. Fire–vegetation interactions during the Mesolithic–Neolithic transition at Lago dell'Accesa, Tuscany, Italy. *The Holocene* 18, 679–692.
- Colombaroli, D., Tinner, W., van Leeuwen, J., Noti, R., Vescovi, E., Vanniere, B., Magny, M., Schmidt, R., Bugmann, H., 2009. Response of broadleaved evergreen Mediterranean forest vegetation to fire disturbance during the Holocene: insights from the peri-Adriatic region. *J. Biogeogr.* 36, 314–326.
- Colombaroli, D., Henne, P.D., Kaltenrieder, P., Gobet, E., Tinner, W., 2010. Species responses to fire, climate and human impact at tree line in the Alps as evidenced by palaeo-environmental records and a dynamic simulation model. *J. Ecol.* 98, 1346–1357.
- Daniau, A.-L., Sánchez-Goni, M.F., Beaufort, L., Laggoun-Défarge, F., Loutre, M.-F., Duprat, J., 2007. Dansgaard-Oeschger climatic variability revealed by fire emissions in south-western Iberia. *Quat. Sci. Rev.* 26, 1369–1383.
- Duffin, K.I., Gillson, L., Willis, K.J., 2008. Testing the sensitivity of charcoal as an indicator of fire events in savanna environments: quantitative predictions of fire proximity, area and intensity. *The Holocene* 18, 279–291.
- Engler, R., Randin, C.F., Thuiller, W., Dullinger, S., Zimmermann, N.E., Araújo, M.B., Pearman, P.B., Le Lay, G., Piedallu, C., Albert, C.H., et al., 2011. 21st century climate change threatens mountain flora unequally across Europe. *Glob. Chang. Biol.* 17, 2330–2341.
- Fernandes, P.M., Vega, J.A., Jimenez, E., Rigolot, E., 2008. Fire resistance of European pines. *For. Ecol. Manag.* 256, 246–255.
- Feurdean, A., Astalos, C., 2005. The impact of human activities in the Gutaiului Mountains, Romania. *Studia Universitatis Babeş-Bolyai. Geologia* 50, 63–72.
- Feurdean, A., Spessa, A., Magyari, E.K., Willis, K.J., Veres, D., Hickler, T., 2012. Trends in biomass burning in the Carpathian region over the last 15,000 years. *Quat. Sci. Rev.* 45, 111–125.
- Feurdean, A., Liakka, J., Vanniere, B., Marinova, E., Hutchinson, S.M., Mosburgger, V., Hickler, T., 2013. 12,000-years of fire regime drivers in the lowlands of Transylvania (Central-Eastern Europe): a data-model approach. *Quat. Sci. Rev.* 81, 48–61.
- Finsinger, W., Tinner, W., 2005. Minimum count sums for charcoal-concentration estimates in pollen slides: accuracy and potential errors. *The Holocene* 15, 293–297.
- Fletcher, W.J., Sanchez Goni, M.F., Peyron, O., Dormoy, I., 2010. Abrupt climate changes of the last deglaciation detected in a Western Mediterranean forest record. *Clim. Past* 6, 245–264.
- Franco Múgica, F., García Antón, M., Maldonado Rujiz, J., Morla Juaristi, C., Sainz Ollero, H., 2005. Ancient pine forest on inland dunes in the Spanish northern meseta. *Quat. Res.* 63, 1–14.
- Fulé, P.Z., Ribas, M., Gutiérrez, E., Vallejo, R., Kaye, M.W., 2008. Forest structure and fire history in an old *Pinus nigra* forest, eastern Spain. *For. Ecol. Manag.* 255, 1234–1242.
- García-Ruiz, J.M., Valero-Garcés, B.L., Martí-Bono, C., González-Sampériz, P., 2003. Asynchrony of maximum glacial advances in the central Spanish Pyrenees. *J. Quat. Sci.* 18, 61–72.
- Gavin, D.G., Hu, F.S., Lertzman, K., Corbett, P., 2006. Weak climatic control of stand-scale fire history during the Late Holocene. *Ecology* 87, 1722–1732.
- Genty, D., Blamart, D., Ghaleb, B., Plagnes, V., Causse, C., Bakalowicz, M., Zouari, K., Chkir, N., Hellstrom, J., Wainer, K., et al., 2006. Timing and dynamics of the last deglaciation from European and North African $\delta^{13}C$ stalagmite profiles—comparison with Chinese and South Hemisphere stalagmites. *Quat. Sci. Rev.* 25, 2118–2142.
- Gil-Romera, G., Carrión, J.S., Pausas, J.G., Sevilla-Callejo, M., Lamb, H.F., Fernández, S., Burjachs, F., 2010. Holocene fire activity and vegetation response in South-Eastern Iberia. *Quat. Sci. Rev.* 29, 1082–1092.
- Gobet, E., Tinner, W., Hochuli, P.A., van Leeuwen, J.F.N., Ammann, B., 2003. Middle to Late Holocene vegetation history of the Upper Engadine (Swiss Alps): the role of man and fire. *Veg. Hist. Archaeobot.* 12, 143–163.
- González-Sampériz, P., Valero-Garcés, B.L., Moreno, A., Jalut, G., García-Ruiz, J.M., Martí-Bono, C., Delgado-Huertas, A., Navas, A., Otto, T., Dedoubat, J.J., 2006. Climate variability in the Spanish Pyrenees during the last 30,000 yr revealed by the El Portalet sequence. *Quat. Res.* 66, 38–52.
- Gottfried, M., Pauli, H., Futschik, A., Akhalkatsi, M., Barančok, P., Alonso, J.L.B., Coldea, G., Dick, J., Erschbamer, B., Calzado, M.R.F., et al., 2012. Continent-wide response of mountain vegetation to climate change. *Nat. Clim. Chang.* 2, 111–115.
- Higuera, P.E., Brubaker, L.B., Anderson, P.M., Hu, F.S., Brown, T.A., 2009. Vegetation mediated the impacts of postglacial climate change on fire regimes in the south-central Brooks Range, Alaska. *Ecol. Monogr.* 79, 201–219.
- Higuera, P.E., Gavin, D.G., Bartlein, P.J., Hallett, D.J., 2010. Peak detection in sediment-charcoal records: impacts of alternative data analysis methods on fire-history interpretations. *Int. J. Wildland Fire* 19, 996–1014.
- Higuera, P., Chipman, M., Barnes, J., Urban, M., Hu, F.S., 2011. Variability of tundra fire regimes in Arctic Alaska: millennial-scale patterns and ecological implications. *Ecol. Appl.* 21, 3211–3226.
- Jiménez-Moreno, G., García-Alix, A., Hernández-Corbalán, M.D., Anderson, R.S., Delgado-Huertas, A., 2013. Vegetation, fire, climate and human disturbance history in the southwestern Mediterranean area during the late Holocene. *Quat. Res.* 79, 110–122.
- Johst, K., Huth, A., 2005. Testing the intermediate disturbance hypothesis: when will there be two peaks of diversity? *Divers. Distrib.* 11, 111–120.
- Kaal, J., Carrión Marco, Y., Asouti, E., Martín Sejo, M., Martínez Cortizas, A., Costa Casáis, J., Criado Boado, F., 2011. Long-term deforestation in NW Spain: linking the Holocene fire history to vegetation change and human activities. *Quat. Sci. Rev.* 30, 161–175.
- Keeley, J.E., Bond, W.J., Bradstock, R.A., Pausas, J.G., Rundel, P., 2012. *Fire in Mediterranean Ecosystems: Ecology, Evolution and Management*. Cambridge University Press.
- Krawchuk, M.A., Moritz, M.A., 2010. Constraints on global fire activity vary across a resource gradient. *Ecology* 92, 121–132.
- Laskar, J.R., 2004. A long-term numerical solution for the insolation quantities of the Earth. *Astron. Astrophys.* 428, 261–285.
- López-Merino, L., López-Sáez, J.A., Alba-Sánchez, F., Pérez-Díaz, S., Carrión, J.S., 2009. 2000 years of pastoralism and fire shaping high-altitude vegetation of Sierra de Gredos in central Spain. *Rev. Palaeobot. Palynol.* 158, 42–51.
- López-Merino, L., Silva Sánchez, N., Kaal, J., López-Sáez, J.A., Martínez Cortizas, A., 2012. Post-disturbance vegetation dynamics during the Late Pleistocene and the Holocene: an example from NW Iberia. *Glob. Planet. Chang.* 92–93, 58–70.
- Lowe, J.J., Rasmussen, S.O., Björck, S., Hoek, W.Z., Steffensen, J.P., Walker, M.J.C., Yu, Z.C., 2008. Synchronisation of palaeoenvironmental events in the North Atlantic region during the Last Termination: a revised protocol recommended by the INTIMATE group. *Quat. Sci. Rev.* 27, 6–17.
- Lynch, J.A., Clark, J.S., Bigelow, N.H., Edwards, M.E., Finney, B.P., 2002. Geographic and temporal variations in fire history in boreal ecosystems of Alaska. *J. Geophys. Res.-Atmos.* 108.
- Magny, M., Bégeot, C., Guiot, J., Peyron, O., 2003. Contrasting patterns of hydrological changes in Europe in response to Holocene climate cooling phases. *Quat. Sci. Rev.* 22, 1589–1596.
- MAGRAMA, 2012. *Estadísticas de Incendios forestales*. Ministerio de Agricultura, Alimentación y Medio Ambiente.
- Médail, F., Quézel, P., 1999. Biodiversity hotspots in the Mediterranean Basin: setting global conservation priorities. *Conserv. Biol.* 13, 1510–1513.
- Millet, L., Rius, D., Galop, D., Heiri, O., Brooks, S.J., 2012. Chironomid-based reconstruction of Lateglacial summer temperatures from the Ech palaeolake record (French western Pyrenees). *Palaeogeogr. Palaeoclimatol. Palaeoecol.* 315–316, 86–99.
- Montané, F., Casals, P., Tauli, M., Lambert, B., Dale, M.R.T., 2009. Spatial patterns of shrub cover after different fire disturbances in the Pyrenees. *Ann. For. Sci.* 66, 612.
- Montserrat, M.J., 1992. *Evolución glacial y post-glacial del clima y la vegetación en la vertiente sur del Pirineo*. Estudio palinológico, Instituto Pirenaico de Ecología, Zaragoza.
- Morales-Molino, C., Postigo-Mijarra, J.M., García-Antón, M., Zazo, C., 2011. Vegetation and environmental conditions in the Doñana Natural Park coastal area (SW Iberia) at the beginning of the last glacial cycle. *Quat. Res.* 75, 205–212.
- Morales-Molino, C., García-Antón, M., Postigo-Mijarra, J.M., Morla, C., 2013. Holocene vegetation and climate interactions on the westernmost fringe of the Mediterranean Basin. *Quat. Sci. Rev.* 59, 5–17.
- Morellón, M., Valero-Garcés, B., Moreno, A., González-Sampériz, P., Mata, P., Romero, O., Maestro, M., Navas, A., 2008. Holocene palaeohydrology and climate variability in northeastern Spain: the sedimentary record of Lake Estanya (Pre-Pyrenean range). *Quat. Int.* 181, 15–31.
- Morellón, M., Valero-Garcés, B., Vegas-Vilarrúbia, T., González-Sampériz, P., Romero, Ó., Delgado-Huertas, A., Mata, P., Moreno, A., Rico, M., Corella, J.P., 2009. Lateglacial and Holocene palaeohydrology in the western Mediterranean region: the Lake Estanya record (NE Spain). *Quat. Sci. Rev.* 28, 2582–2599.
- Moreno, A., Stoll, H.M., Jiménez-Sánchez, M., Cacho, I., Valero-Garcés, B., Ito, E., Edwards, L. R., 2010. A speleothem record of rapid climatic shifts during last glacial period from Northern Iberian Peninsula. *Glob. Planet. Chang.* 71, 218–231. <http://dx.doi.org/10.1016/j.gloplacha.2009.10.002>.
- Moreno, A., González-Sampériz, P., Morellón, M., Valero-Garcés, B.L., Fletcher, W.J., 2012. Northern Iberian abrupt climate change dynamics during the last glacial cycle: a view from lacustrine sediments. *Quat. Sci. Rev.* 36, 139–153.
- Muñoz Sobrino, C., Heiri, O., Hazekamp, M., van der Velden, D., Kirilova, E.P., García-Moreiras, I., Lotter, A.F., 2013. New data on the Lateglacial period of SW Europe: a high resolution multiproxy record from Laguna de la Roya (NW Iberia). *Quat. Sci. Rev.* 80, 58–77.
- Paula, S., Arianoutsou, M., Kazanis, D., Tavsanoglu, Ç., Lloret, F., Buhk, C., Ojeda, F., Luna, B., Moreno, J.M., Rodrigo, A., et al., 2009. Fire-related traits for plant species of the Mediterranean Basin. *Ecology* 90, 1420.
- Pausas, J.G., Paula, S., 2012. Fuel shapes the fire–climate relationship: evidence from Mediterranean ecosystems. *Glob. Ecol. Biogeogr.* 21, 1074–1082.
- Pérez-Sanz, A., González-Sampériz, P., Moreno, A., Valero-Garcés, B., Gil-Romera, G., Rieradevall, M., Tarrats, P., Lasheras-Álvarez, L., Morellón, M., Belmonte, A., et al., 2013. Holocene climate variability, vegetation dynamics and fire regime in the central Pyrenees: the Basa de la Mora sequence (NE Spain). *Quat. Sci. Rev.* 73, 149–169.
- Power, M.J., Marlon, J., Ortiz, N., Bartlein, P.J., Harrison, S.P., Mayle, F.E., Ballouche, A., Bradshaw, R.H.W., Carcaillet, C., Cordova, C., et al., 2008. Changes in fire regimes since the last glacial maximum: an assessment based on a global synthesis and analysis of charcoal data. *Clim. Dyn.* 30, 887–907.
- Power, M.J., Whitlock, C., Bartlein, P.J., 2011. Postglacial fire, vegetation, and climate history across an elevational gradient in the Northern Rocky Mountains, USA and Canada. *Quat. Sci. Rev.* 30, 2520–2533.
- Power, M.J., Mayle, F.E., Bartlein, P.J., Marlon, J.R., Anderson, R.S., Behling, H., Brown, K.J., Carcaillet, C., Colombaroli, D., Gavin, D.G., Hallett, D.J., Horn, S.P., Kennedy, L.M., Lane, C.S., Long, C.J., Moreno, P.I., Paitre, C., Robinson, G., Taylor, Z., Walsh, M.K., 2013. Climatic control of the biomass-burning decline in the Americas after ad 1500. *The Holocene* 23, 3–13.
- R Core Team, 2012. *R: A Language and Environment for Statistical Computing*. R Foundation for Statistical Computing, Vienna, Austria.
- Renssen, H., Seppä, H., Heiri, O., Roche, D.M., Goosse, H., Fichefet, T., 2009. The spatial and temporal complexity of the Holocene thermal maximum. *Nat. Geosci.* 2, 411–414.
- Reyes, O., Casal, M., 1998. Are the dominant species in N.W. Spain fire-prone? *Fire Management and Landscape Ecology*. Fairfield, Washington, pp. 177–188.
- Rius, D., Vanniere, B., Galop, D., 2009. Fire frequency and landscape management in the northwestern Pyrenean piedmont, France, since the early Neolithic (8000 cal. BP). *The Holocene* 19, 847–859.

- Rius, D., Vanni re, B., Galop, D., 2011a. Holocene history of fire, vegetation and land use from the central Pyrenees (France). *Quat. Res.* 77, 54–64.
- Rius, D., Vanni re, B., Galop, D., Richard, H., 2011b. Holocene fire regime changes from multiple-site sedimentary charcoal analyses in the Lourdes basin (Pyrenees, France). *Quat. Sci. Rev.* 30, 1696–1709.
- Roberts, N., Stevenson, T., Davis, B., Cheddadi, R., Brewster, S., Rosen, A., 2004. Holocene climate, environment and cultural change in the circum-Mediterranean region. In: Battarbee, R.W., Gasse, F., Stickle, C.E. (Eds.), *Past Climate Variability through Europe and Africa*. Springer, Netherlands, pp. 343–362.
- St hli, M., Finsinger, W., Tinner, W., Allg wer, B., 2006. Wildfire history and fire ecology of the Swiss National Park (Central Alps): new evidence from charcoal, pollen and plant macrofossils. *The Holocene* 16, 805–817.
- Tapias, R., Climent, J., Pardos, J.A., Gil, L., 2004. Life histories of Mediterranean pines. *Plant Ecol.* 171, 53–68.
- Tinner, W., Lotter, A.F., 2001. Central European vegetation response to abrupt climate change at 8.2 ka. *Geology* 29, 551–554.
- Tinner, W., Hu, F.S., 2003. Size parameters, size-class distribution and area-number relationship of microscopic charcoal: relevance for fire reconstruction. *Holocene* 13, 499–505.
- Tinner, W., Hubschmid, P., Wehrli, M., Ammann, B., Conedera, M., 1999. Long-term forest fire ecology and dynamics in southern Switzerland. *J. Ecol.* 87, 273–289.
- Tinner, W., Conedera, M., Ammann, B., Lotter, A., 2005. Fire ecology north and south of the Alps since the last ice age. *The Holocene* 15, 1214–1226.
- Turner, R., Kelly, A., Roberts, N., 2004. A critical assessment and experimental comparison of microscopic charcoal extraction methods. In *Charcoals from the Past: Cultural and Palaeoenvironmental Implications*. Proceedings of the Third International Meeting of Anthracology, pp. 265–272.
- Utrilla, P., Montes, L., 2007. El Paleol tico superior al sur de los Pirineos. Contactos entre fronteras. In: Cazals, N., Gonz lez Urquijo, J.E., Terradas, X. (Eds.), *Fronti res Naturelles et Fronti res Culturelles Dans Les Pyr n es Pr historiques*. Tarascon sur Ari ge, pp. 205–223.
- Utrilla, P., Rodan s, J.M., 1997. La actuaci n del hombre sobre el paisaje durante la Prehistoria en el Valle Medio del Ebro. In: Garc a-Ruiz, J.M., L pez Garc a, P. (Eds.), *Acci n Humana Y Desertificaci n En Ambientes Mediterr neos*. Instituto Pirenaico de Ecolog a-CSIC, Zaragoza, pp. 61–98.
- V zquez de la Cueva, A., Garc a del Barrio, J.M., Quero, M.O., Palomares, O.S., 2006. Recent fire regime in peninsular Spain in relation to forest potential productivity and population density. *Int. J. Wildland Fire* 15, 397.
- Vescovi, E., Ravazzi, C., Arpent , E., Finsinger, W., Pini, R., Valsecchi, V., Wick, L., Ammann, B., Tinner, W., 2007. Interactions between climate and vegetation during the Lateglacial period as recorded by lake and mire sediment archives in Northern Italy and Southern Switzerland. *Quat. Sci. Rev.* 26, 1650–1669.
- Webb III, T., Ruddiman, W.F., Street-Perrot, F.A., Markgraf, V., Kutzbach, J.E., Bartlein, P.J., Wright Jr., H.E., Prell, W.L., 1993. Climatic changes during the past 18,000 years: regional syntheses, mechanisms and causes. *Global Climates since the Last Glacial Maximum*. University of Minnesota Press, pp. 515–535.
- Whitlock, C., Larsen, C., 2002. *Tracking Environmental Change Using Lake Sediments*. Springer, Netherlands 75–97.
- Whitlock, C., Higuera, P.E., McWethy, D.B., Briles, C.E., 2010a. Paleocological perspectives on fire ecology: revisiting the fire-regime concept. *TOECOLJ* 3, 6–23.
- Whitlock, C., Tinner, W., Newman, Louise, Kiefer, Thorsten, 2010b. Fire in the Earth system: a palaeoperspective. *Pages News* 18, 55–56.