



## ANTHROPOLOGY

# Nobody's land? The oldest evidence of early Upper Paleolithic settlements in inland Iberia

Nohemi Sala<sup>1,2\*</sup>, Manuel Alcaraz-Castaño<sup>3</sup>, Martin Arriolabengoa<sup>4</sup>, Virginia Martínez-Pillado<sup>1,2</sup>, Ana Pantoja-Pérez<sup>1,2</sup>, Antonio Rodríguez-Hidalgo<sup>5,6</sup>, Edgar Téllez<sup>1</sup>, Miriam Cubas<sup>3</sup>, Samuel Castillo<sup>3</sup>, Lee J. Arnold<sup>7</sup>, Martina Demuro<sup>7</sup>, Mathieu Duval<sup>1,8,9</sup>, Andion Arteaga-Bribea<sup>6</sup>, Javier Llamazares<sup>1</sup>, Juan Ochando<sup>10,11</sup>, Gloria Cuenca-Bescós<sup>12</sup>, Ana B. Marín-Arroyo<sup>13</sup>, María Martín Seijo<sup>14</sup>, Luis Luque<sup>3</sup>, Carmen Alonso-Llamazares<sup>15</sup>, Mikel Arlegi<sup>16</sup>, Manuel Rodríguez-Almagro<sup>1</sup>, Cecilia Calvo-Simal<sup>1</sup>, Beatriz Izquierdo<sup>17</sup>, Felipe Cuartero<sup>3</sup>, Leire Torres-Iglesias<sup>13</sup>, Lucía Agudo-Pérez<sup>13</sup>, Alfonso Arribas<sup>18</sup>, José S. Carrión<sup>10</sup>, Donatella Magri<sup>11</sup>, J.-X. Zhao<sup>19</sup>, Adrián Pablos<sup>1,2,20,21\*</sup>

Copyright © 2024 the Authors, some rights reserved; exclusive licensee American Association for the Advancement of Science. No claim to original U.S. Government Works. Distributed under a Creative Commons Attribution NonCommercial License 4.0 (CC BY-NC).

The Iberian Peninsula is a key region for unraveling human settlement histories of Eurasia during the period spanning the decline of Neandertals and the emergence of anatomically modern humans (AMH). There is no evidence of human occupation in central Iberia after the disappearance of Neandertals ~42,000 years ago until approximately 26,000 years ago, rendering the region “nobody’s land” during the Aurignacian period. The Abrigo de la Malia provides irrefutable evidence of human settlements dating back to 36,200 to 31,760 calibrated years before the present (cal B.P.) This site also records additional levels of occupation around 32,420 to 26,260 cal B.P., suggesting repeated settlement of this territory. Our multiproxy examination identifies a change in climate trending toward colder and more arid conditions. However, this climatic deterioration does not appear to have affected AMH subsistence strategies or their capacity to inhabit this region. These findings reveal the ability of AMH groups to colonize regions hitherto considered uninhabitable, reopening the debate on early Upper Paleolithic population dynamics of southwestern Europe.

## INTRODUCTION

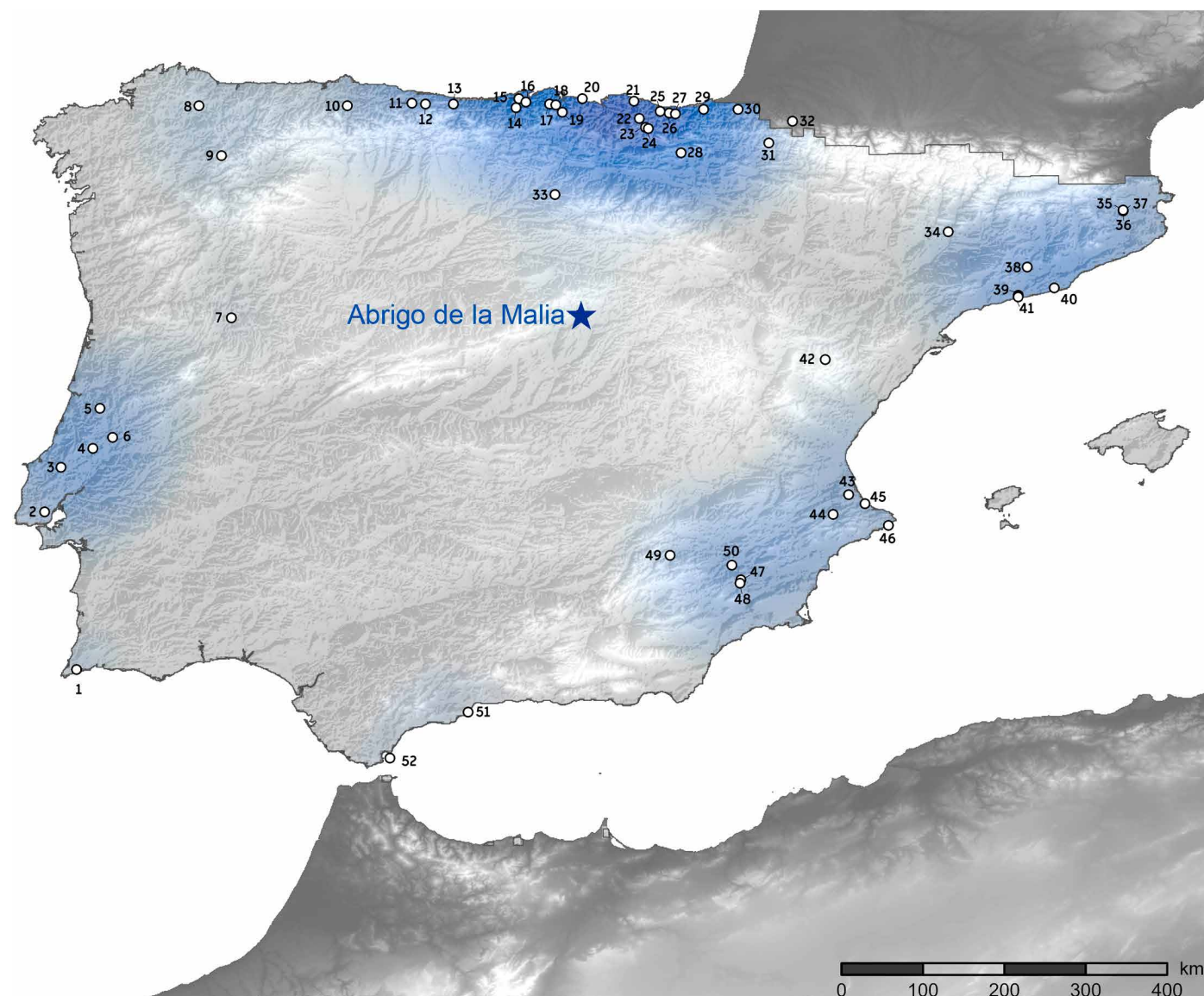
The Iberian Peninsula is renowned for its rich Paleolithic archeological record and for being a strategic territory for European populations during the Upper Paleolithic. Despite being considered a refuge for Paleolithic genetic populations over the past 40,000 years (1), evidence points

to an uneven occupation of the Iberian territory. This has been attributed to topographic, paleoecological, and lithological factors, with the availability of caves and rock shelters being a key determinant (2–7).

Specifically, Iberia has an abundant Upper Paleolithic record, both in terms of archeological occupation levels and rock art, mainly found on the Cantabrian coast (3, 8), but also present in the Mediterranean and Atlantic coastal regions (Fig. 1, fig. S1, and dataset S1). However, evidence is sparse concerning the inland areas of the peninsula; thus, this territory has traditionally been considered unpopulated for most of the Upper Paleolithic, especially during its early phases (3, 5, 9). The central part of the Iberian Peninsula consists of two plateaus [average altitude of 650 meters above sea level (m.a.s.l.)], divided by the *Sistema Central* Mountain system. It has been suggested that these plateaus and their surrounding mountain ranges served as ecogeographic barriers for human populations during the coldest periods of the last glacial cycle, especially during the transition from the Middle to the Upper Paleolithic (6, 10). In particular, the central part of the peninsula (i.e., Central Iberia) has often been depicted as “nobody’s land” between the demise of the Neandertals in the region until the retreat of the Last Glacial Maximum around 19 thousand years (ka) ago [see discussion in (5, 10)]. There has been extensive discussion regarding the possible reasons behind the lack of occupation by anatomically modern humans (AMH) during the first few millennia of the Upper Paleolithic, with paleoclimatic and ecological factors at the center of the debate (5, 6, 11–13). However, several researchers have suggested that the traditional depiction of inland Iberia as either a desolate landscape or a mere crossing area during most of the Upper Paleolithic is not necessarily accurate and, in part, likely reflects historical preference biases of researchers toward the coastal regions of the peninsula, at the expense of the large Iberian hinterland (5, 9, 13, 14).

<sup>1</sup>Centro Nacional de Investigación Sobre Evolución Humana (CENIEH), Burgos, Spain. <sup>2</sup>Centro Mixto UCM-ISCIII de Evolución y Comportamiento Humanos, Madrid, Spain. <sup>3</sup>Área de Prehistoria, Departamento de Historia y Filosofía, Universidad de Alcalá, Alcalá de Henares, Spain. <sup>4</sup>Departamento de Geología, Facultad de Ciencia y Tecnología, Universidad del País Vasco-Euskal Herriko Unibertsitatea (UPV/EHU), Leioa, Spain. <sup>5</sup>Consejo Superior de Investigaciones Científicas, Instituto de Arqueología-Mérida (CSIC-Junta de Extremadura), Mérida, Spain. <sup>6</sup>Institut Català de Paleoecologia Humana i Evolució Social (IPHES-CERCA), Tarragona, Spain. <sup>7</sup>School of Physics, Chemistry and Earth Sciences, Environment Institute, and Institute for Photonics and Advanced Sensing (IPAS), University of Adelaide, Adelaide, SA, Australia. <sup>8</sup>Australian Research Centre for Human Evolution, Griffith University, Brisbane, QLD, Australia. <sup>9</sup>Palaeoscience Laboratories, Department of Archaeology and History, La Trobe University, Melbourne, VIC, Australia. <sup>10</sup>Department of Plant Biology (Botany Area), Faculty of Biology, University of Murcia, Murcia, Spain. <sup>11</sup>Department of Environmental Biology, Sapienza University of Rome, Rome, Italy. <sup>12</sup>Aragosaurus-IUCA-Departamento Ciencias de la Tierra, Universidad de Zaragoza, Zaragoza, Spain. <sup>13</sup>Grupo de I+D+i EVOADAPTA (Evolución Humana y Adaptaciones Durante la Prehistoria), Departamento de Ciencias Históricas, Universidad de Cantabria, Santander, Spain. <sup>14</sup>Instituto de Ciencias del Patrimonio (INCIPIIT), Consejo Superior de Investigaciones Científicas (CSIC), Santiago de Compostela, Spain. <sup>15</sup>Departamento de Biología Animal, Ecología, Parasitología, Edafología y Química Agrícola, Universidad de Salamanca, Salamanca, Spain. <sup>16</sup>McDonald Institute for Archaeological Research, University of Cambridge, Cambridge CB2 3ER, UK. <sup>17</sup>Paseo de la Estación, 26. Getafe, Madrid, Spain. <sup>18</sup>Estación Paleontológica Valle del río Fardes, Instituto Geológico y Minero de España (IGME), Tres Cantos, Madrid, Spain. <sup>19</sup>Radiogenic Isotope Facility, School of Earth and Environmental Sciences, The University of Queensland, Brisbane, QLD 4072, Australia. <sup>20</sup>Departamento de Geodinámica, Estratigrafía y Paleontología, Facultad de Ciencias Geológicas, Universidad Complutense de Madrid, Madrid, Spain. <sup>21</sup>Departamento de Prehistoria y Arqueología, Universidad de Sevilla, Sevilla, Spain.

\*Corresponding author. Email: nohemi.sala@cenieh.es (N.S.); adrizaino@yahoo.es (A.P.)



**Fig. 1. Location of early Upper Paleolithic sites.** Map of the Iberian Peninsula showing the location of the Abrigo de la Malia (blue star) site and a kernel density analysis of early Upper Paleolithic sites in the time range from 40 ka to 30 ka cal B.P. Note the total absence of sites in most of the Iberian hinterland, besides the data from Abrigo de la Malia. Key sites are available in fig. S1 and dataset S1.

During marine isotope stage 3 (MIS 3; 60 to 27 ka), frequent and rapid climate shifts played a crucial role in the transition from the Middle to the Upper Paleolithic in Europe (10, 15–17). Toward the end of MIS 3, a cooling trend occurred, resulting in more open landscapes and several aridity episodes, identified through various proxies in the Iberian paleontological and archeological records (18–21). These colder and drier conditions have been linked to the disappearance of Neandertals from the region around 42 ka cal B.P. (calibrated years before the present), preceding Heinrich stadial 4 (10). Because of the scarcity of archeological records from the central region of Iberia from 42 to 26 ka cal B.P., there is limited understanding of the impacts of paleoecological and paleoclimatic conditions on human populations at the regional scale. However, recent studies of loess deposits in the Tagus basin have identified variations in

environmental conditions resulting from climate changes (7, 10). The climate inferred from a hyena den site in Segovia at 34.2 ka and 40.4 ka cal B.P. (19) suggests a steppe environment in which cold-adapted species thrived in open areas. It remains unclear whether these tundra-steppe conditions hindered the establishment of permanent AMH occupations across inland Iberia.

In recent years, knowledge of population dynamics and human-environment-climate interactions in inland Iberia during the last glacial cycle has grown, supported by the latest research focused on surveying and excavating both known and previously unknown sites and territories (4, 5, 14, 18, 19, 22–26). However, even when considering the most recent data, there is still a hiatus of about 16,000 years between the last persistence of Middle Paleolithic populations in Central Iberia, currently dated to ~42 ka cal B.P. at

several sites (10), and the first appearance of the Upper Paleolithic, as recorded at the Peña Capón rock shelter at ~26 ka cal B.P. (5) and potentially at Los Enebrales rock shelter at ~27 ka cal B.P., respectively (27). Here, we present results obtained at the Abrigo de la Malia, a rock shelter located in the southeastern foothills of the *Sistema Central* range, where robust evidence of early Upper Paleolithic human occupations is reported in Central Iberia. These results fill a historic gap in the archeology of the first modern human peopling of Southwest Europe and open alternative perspectives on how our species colonized and settled challenging territories.

### The Malia rock shelter

The Abrigo de la Malia site (herein Malia) is located in Tamajón (Guadalajara, Spain), central Iberia (texts S2 and S3), in the easternmost foothills of the *Sistema Central* Mountain range (Fig. 1). The site is on the boundary between the Meso- and the Supramediterranean biogeographic regions (20). The rock shelter is nestled between the Sorbe and Jarama rivers, at an altitude of 1100 m.a.s.l., half a kilometer away from the Cueva de los Torrejones (4), and a few kilometers from other Paleolithic sites such as Jarama VI (26) and Peña Capón (28). The bedrock of the Malia rock shelter site consists of marine limestone and dolostone deposited during the Upper Cretaceous (text S3) (29). These rocks are intensely karstified, giving rise to numerous caves and shelters that have been explored archeopaleontologically and speleologically for several decades (30).

The Malia rock shelter contains an Upper Pleistocene sedimentary infill record that was found in 2017 by A. Arribas during survey work conducted in the Tamajón karst area. Since then, an area of 18 m<sup>2</sup> has been excavated (texts S3 and S4) in extension. The site consists of in situ Paleolithic units with Late Prehistoric negative structures crossing through them. These negative structures have been excavated first to identify the occupations of the communities during the late prehistory and to prevent contamination or mixing of archeological elements between the different occupational phases of the rock shelter (text S3).

## RESULTS

### Geological and stratigraphic framework

The sedimentary sequence excavated at the Malia rock shelter currently has an average thickness of 110 cm, spanning from the mid-Holocene to the Late Pleistocene. The Malia sedimentary record can be subdivided into five lithostratigraphic units (LU-I to LU-V, from top to bottom) (Fig. 2 and texts S4 and S5).

LU-I includes all late prehistory stratigraphic units (UEs) that comprise human-made negative structures (pits and silos) and their infills, along with other deposits described in the field and represented in the Harris matrix (text S3.1). These negative structures cut through the other lithostratigraphic units, creating net contacts that are typically subvertical. The sediments are characterized by a heterogeneous composition and texture, without sorting. Some areas are clast-supported, while others are matrix-supported, characterized by a high content of organic matter. The framework elements consist of centimeter- and millimeter-sized lithoclasts of dolostone and black shale, fragments of pottery, botanical and faunal remains dominated by domestic species, and lithic industry attributed to Chalcolithic and Bronze Age (text S6).

LU-II represents a clast-supported deposit with noticeable channel morphology. It crosses vertically through LU-III and LU-IV. The

deposit contains lithic industry and faunal remains. The channel morphology is lost laterally, but the unit appears to maintain erosive contact with LU-III throughout the entire area. A total of six radiocarbon ages from this level provide evidence of mixed artifacts with different chronologies (see below; text S6). In addition, analysis of the artifacts reveals a mixture of Paleolithic tools and late prehistory ceramic fragments and lithic tools (text S10). This unit, therefore, corresponds to fluvio-karstic reactivation during the Holocene, producing a mixture of previous archeological materials. LU-II is also delimited in the archeostratigraphic projections (fig. S5).

LU-III is partially eroded by LU-II and crossed through by LU-I. This unit does not outcrop throughout the entire excavated surface; rather, it extends to the northern end of the excavation area. It consists of an alternating sequence that dips slightly to the north, comprising 5- to 7-cm-thick sandy-silty facies alternating with 2- to 3-cm-thick clastic facies. Very few archeological materials have been found in this unit, only at its base and in contact with the underlying lithostratigraphic unit, and therefore, it possibly incorporates materials from the older unit. Because of the limited surface excavated to date, the archeological potential of LU-III is currently being examined with caution.

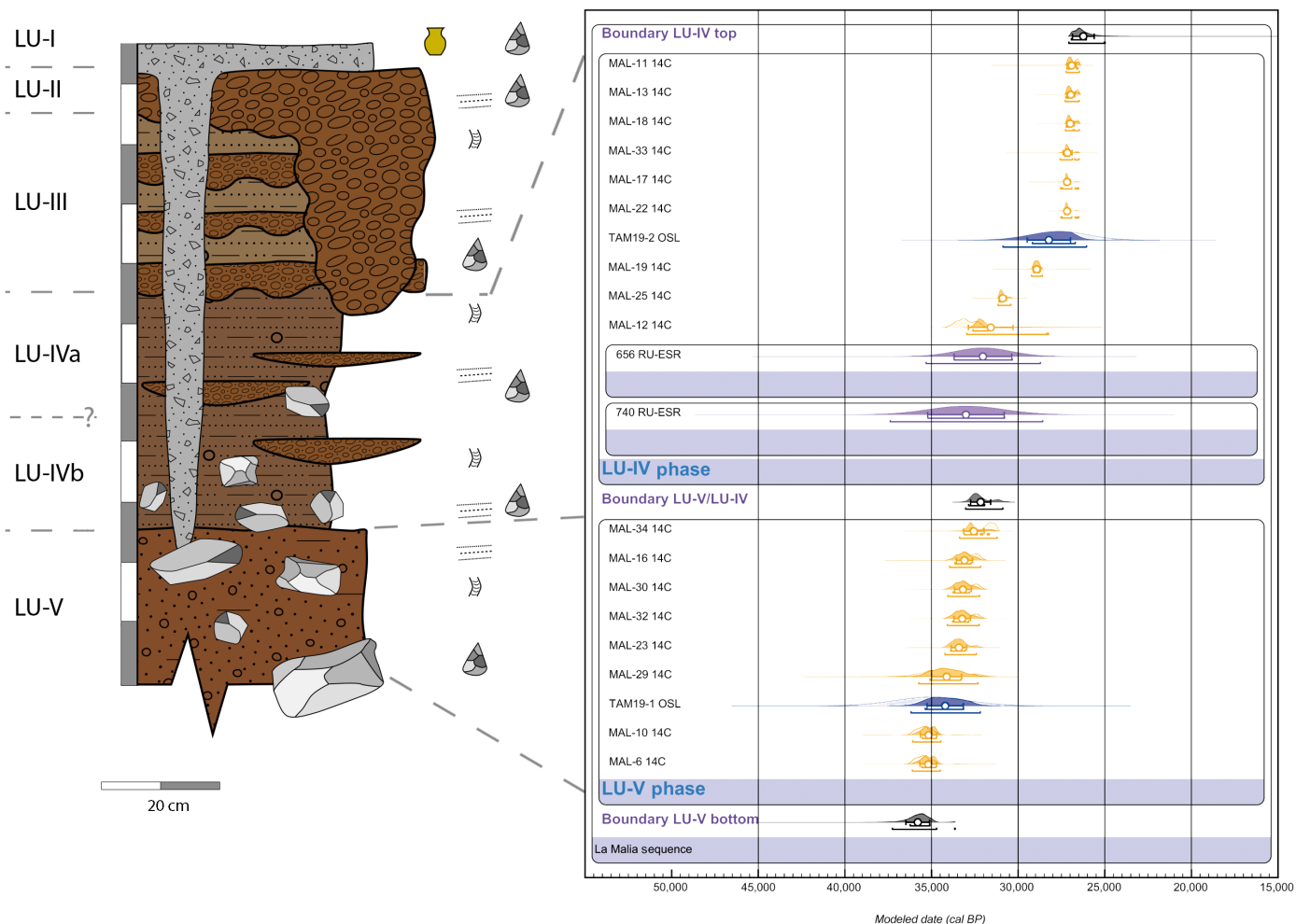
LU-IV has been excavated to the greatest extent and depth and has yielded most of the archeological remains, including lithic tools, vertebrate fossils, in situ hearths, charcoal, and iron oxides small fragments scattered in this unit. It is generally a sandy-silty unit with millimeter- to centimeter-sized black shale lithoclasts, angular lithoclasts of autochthonous dolostone ranging in size from millimeters to meters, and abundant archeological materials. The distribution of gravel elements is not uniform throughout the unit. The dolostone lithoclasts are more prominent in the basal part of the unit and are identified as collapsed blocks from the shelter roof. These collapsed fragments may have altered and deformed the initial morphology and texture of the unit (text S5 and fig. S6). There are areas with localized and discontinuous facies of millimeter- and centimeter-sized black shale clasts, which appear far from the large blocks and cut through massive sandy-silty facies.

LU-V: The basal unit is in concordant contact with LU-IV throughout the excavated area so far. This unit is primarily matrix-supported and homogeneous, composed of gravel, sand, and silt, and has a composition similar to LU-IV. In more sheltered areas of the site, there is a noticeable level change from light brown to more orange-brown sediment, while in other areas, the transition between the two levels is more gradual. This could be attributed to the continuation of collapsed blocks, especially those ranging from decimeter-to-meter size, pedogenic processes, and soil moisture loss after excavation. A substantial amount of archeological material, including lithics and bone industry, as well as the remains of ungulates and other species of fauna, has been recovered from this unit.

### Chronostratigraphic framework of the Upper Paleolithic units

The geochronological framework has been established using three different dating techniques applicable to bone, charcoal, teeth, and sediments, namely, AMS radiocarbon dating (text S6), single-grain quartz optically stimulated luminescence (OSL) dating (text S7), and combined uranium series and electron spin resonance (US-ESR) dating (text S8). Bayesian modeling has been used to integrate all our chronological and stratigraphic results and derive final modeled age ranges using all of the chronological evidence available for





**Fig. 2. Stratigraphic and chronological context of the Malia site.** Stratigraphic column and Bayesian age modeling results for the Malia site. The colors used for LU-II to LU-V correspond to those of the Munsell color system for wet sediment. LU, lithostratigraphic unit. Bayesian modeling has been undertaken in OxCal v.4.4.4 (45), assuming that each likelihood has a 5% prior probability of being an outlier within a general t-type outlier model. The unmodeled age distributions for the optically stimulated luminescence (OSL; blue), electron spin resonance (ESR; green), and radiocarbon (red) dating determinations (likelihoods) are shown as light shaded color probability distribution functions (PDFs). The modeled posterior distributions for the dating determinations and stratigraphic unit boundaries are shown as dark shaded color and gray PDFs, respectively. Unmodeled and modeled ages are shown on a calendar year time scale, and both are expressed in years before AD 1950. The white circles and associated error bars represent the mean ages and  $1\sigma$  uncertainty ranges of the PDFs. The 68.3 and 95.4% ranges of the highest posterior probabilities are indicated by the horizontal bars underneath the PDFs.

the most extensively excavated Paleolithic units LU-IV and LU-V (text S9).

Table S4 summarizes the environmental dose rates, single-grain  $D_e$  values, and final ages for the two OSL dating samples from LU-IV and LU-V (TAM19-1 and TAM19-2). The single-grain  $D_e$  distributions of grains that passed the single-aliquot regenerative-dose (SAR) quality assurance criteria are shown as radial plots in fig. S7. In general, the single-grain OSL  $D_e$  distributions of both samples are consistent with well-bleached, unmixed sediments [see, e.g., (31–36)]. The single-grain OSL datasets display limited  $D_e$  dispersion that is well-represented by the weighted mean value (as indicated by the large proportions of grains lying within the  $2\sigma$  gray bands of the radial plots) (fig. S7), and low overdispersion values of  $26 \pm 2\%$  to  $27 \pm 2\%$  (table S4). These overdispersion values are consistent with (i.e., within  $2\sigma$ ) those typically reported for well-bleached and

undisturbed single-grain  $D_e$  datasets [see, e.g., (34, 37, 38)] and they are comparable to, albeit slightly higher than, the  $2\sigma$  overdispersion range obtained in the dose recovery tests for sample TAM19-1 (13 to 25%). Both  $D_e$  datasets are considered to be normally distributed according to their weighted skewness scores (32, 39). Application of the maximum log-likelihood ( $L_{\max}$ ) test (40) indicates that the central age model (CAM) is statistically favored over the three- or four-parameter minimum age models (MAM-3 or MAM-4) (41) for the two  $D_e$  datasets.

Collectively, these single-grain OSL  $D_e$  characteristics suggest that samples TAM19-1 and TAM19-2 do not suffer from major  $D_e$  scatter related to insufficient bleaching before burial [see, e.g., (35, 39)], syn-depositional mixing with pre-existing rock shelter deposits before burial [see, e.g., (37, 42, 43)], or widespread post-depositional sediment mixing between units [see, e.g., (44)]. We have therefore

used the weighted mean (CAM)  $D_e$  values to derive the final OSL burial dose estimates for both samples. Weighted mean OSL ages of  $27.7 \pm 1.7$  ka and  $35.1 \pm 2.1$  ka are obtained for LU-IV and LU-V, respectively (table S4).

Apparent U-series ages obtained for two fossil teeth from LU-IV (samples #656 and #740) range between ~15 ka and ~30 ka. Assuming that there has been no uranium leaching, these ages should be regarded as minimum age constraints for the fossils since uranium incorporation into dental tissues may be significantly delayed after the death of the organism. However, it is not possible to derive finite ages for samples #656 and #740 using the combined US-ESR age calculation, suggesting the presence of uranium leaching in some dental tissues. Sensitivity tests carried out using different uranium uptake models nevertheless provide largely indistinguishable age estimates. They vary by 4.2-ka (#656) and 7.3-ka (#740) maximum, indicating that uranium leaching has a limited impact on the calculated U-series/ESR age results (table S9). Consequently, we can reasonably conclude that the true age of the fossils from LU-IV lies somewhere between the combined mean modeled estimates of  $26.8 \pm 1.7$  ka and  $29.6 \pm 0.5$  ka ( $1\sigma$ ), with maximum age constraints of  $32.1 \pm 1.6$  ka and  $33.1 \pm 1.7$  ka calculated for #656 and #740, respectively, using the RU (recent uptake) model. Further details regarding the robustness and reliability of the ESR and U-series analytical results are provided in text S8.

Radiocarbon ages were obtained for 28 samples from the archaeological sequence. Except for the three pieces of charcoal, all samples were tooth and bone fragments with clear traces of human manipulation in the form of cut marks or anthropogenic fractures (text S6). Of these, three correspond to LU-I, six to LU-II, one to LU-III, and the rest to Paleolithic units LU-IV and LU-V (10 and 8 samples, respectively). The LU-I radiocarbon dating samples correspond to the site's Chalcolithic and Bronze Age occupations (table S3). The scattered dating results from LU-II are consistent with the mixture of archaeological materials detected during the excavation (table S3). The individual radiocarbon ages for Paleolithic unit LU-IV range between 33,983 and 32,009 cal B.P. (MAL-12) and between 25,922 and 25,696 cal B.P. (MAL-24), while those obtained for Paleolithic unit LU-V span 36,237 to 34,662 cal B.P. (MAL-6) to 32,825 to 31,111 cal B.P. (MAL-34) (95.4% calibrated age ranges) (table S3).

Bayesian age modeling confirms the consistency of the radiocarbon, OSL, and ESR chronological dataset for Paleolithic units LU-IV and LU-V (table S10), which favors the calculation of combined modeled ages for these two units from their upper and lower boundary posterior probability distributions [using the OxCal *Date query*; (45)]. The modeled ages reveal that the LU-V human occupation of the Malia rock shelter spans 36,200 to 31,760 cal B.P. and the overlying LU-IV human occupation occurred between 32,420 and 26,260 cal B.P. (95.4% credible intervals; Fig. 2), both of which correspond to the early and middle phases of the Upper Paleolithic during late MIS 3 and early MIS 2.

### Human occupation evidence

The entire lithostratigraphic sequence of the Malia site preserves evidence of human occupation, from the upper units corresponding to late prehistory (LU-I and LU-II) to the lowermost Paleolithic units (LU-III to LU-V). This is demonstrated by the abundance of lithic industry (text S10.1) and ungulate remains with marks indicating anthropogenic intervention (cut marks, intentional fracture, and bone industry) throughout the sequence (text S11). The

archeological assemblages include lithic and bone tools associated with hunting activities (assegais) (text S10).

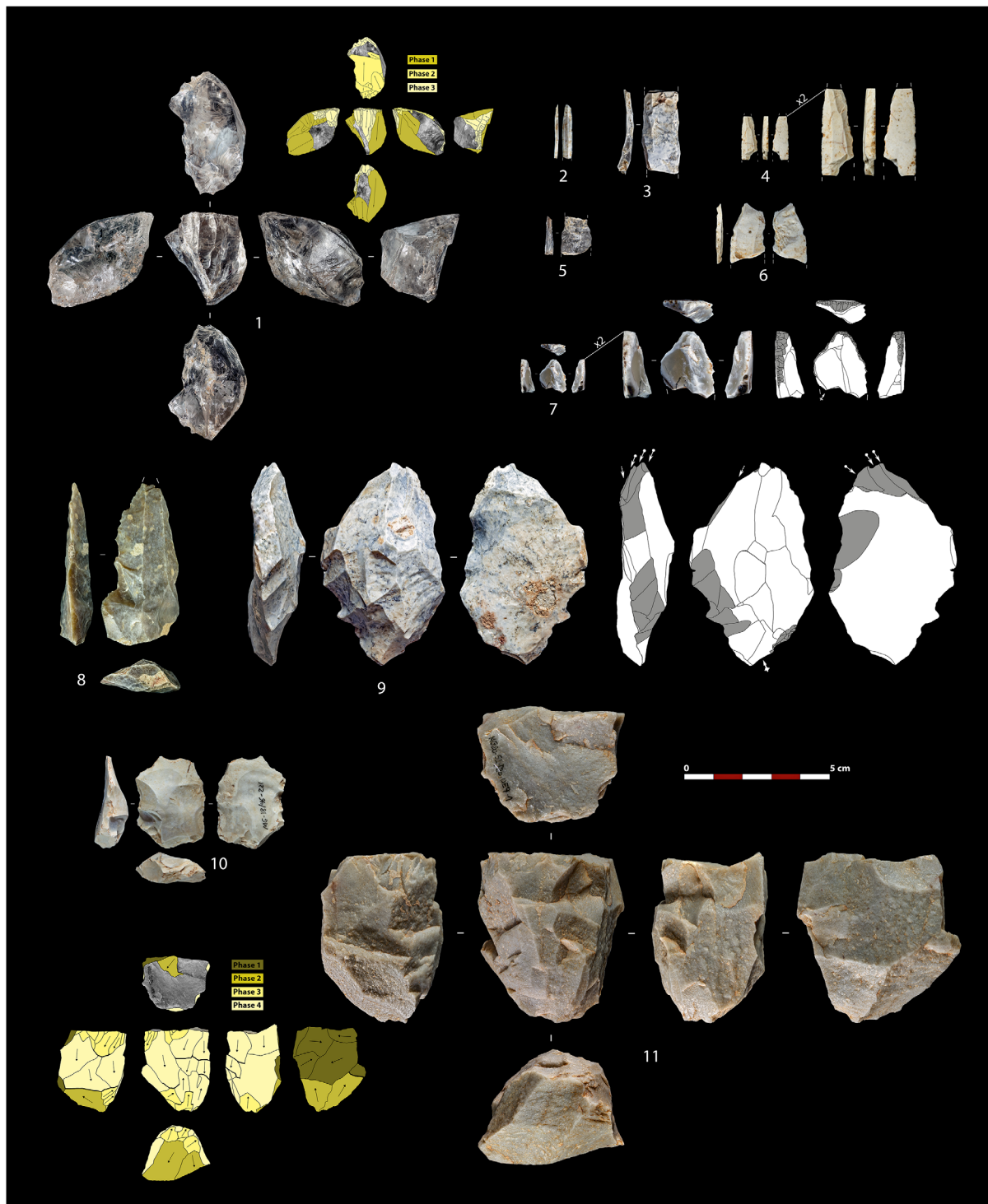
The lithic assemblage assigned to LU-V is composed of 131 items, all of which are classified as knapping products. Sixty-four (48.8%) are complete, while 67 (52.7%) present fractures. Regarding surface alterations, whitish patinas or dehydration are recorded for 39 flint pieces (29.8% of the total assemblage and 62.9% of the flint collection), while rounding is absent and pseudo-retouches are only marginally found in some quartz pieces. Thermal alterations, including color change, potlids (oval-shaped scalar fractures), and internal cracking (interpreted as the result of fire exposure) are recorded for 10 flint artifacts (7.6%). Flint and quartz are the most common raw materials, followed by quartzite and hyaline quartz or rock crystal (table S11). Raw blanks are the most represented technological category, followed by knapping waste (*microdébitage* and chunks), decortication products (cortical flakes), cores, retouched tools, and tool maintenance by-products (table S11). No natural blocks interpreted as supplies for knapping have been recorded.

Although the recorded assemblage is scarce, the obtained results (dataset S2) strongly point to a largely fragmented operational sequence, showing that lithic products were brought into the rock shelter after the initial preparation and the first knapping of cores had been undertaken elsewhere. The exploitation stage (phase 2) of the *chaîne opératoire* is, by far, the most represented (88.6%), followed by the consumption and abandonment stage (phase 3) (5.3%) and the initialization stage (phase 1), which is only marginally represented (1.1%).

Retouched artifacts, all produced on flint, include a backed bladelet (Fig. 3.4), a blade with discontinuous retouch on one edge (Fig. 3.8), a sidescraper (Fig. 3.10), a denticulate, and a small-nosed endscraper (Fig. 3.7), the latter three configured on flake blanks. As for knapping methods, the raw blanks are dominated by flakes (83.6%), followed by bladelets (12.7%) and blades (5.1%), most of them produced on flint (62.0%), especially in the case of the laminar productions (table S12). Cores, all of which were abandoned during the advanced stages of the production phase, include a laminar prismatic core on medium-grained quartzite (Fig. 3.11), a narrow-sided bladelet core on hyaline quartz (Fig. 3.1), a carinated burin core on flint (Fig. 3.9), and two expedient flake cores on quartz and quartzite. Despite the relatively high abundance of flakes, the blade and bladelet component is significantly represented in the assemblage, as three of the five recorded cores were prepared to produce blades and bladelets and these blanks present significant variability (Fig. 3 and table S12).

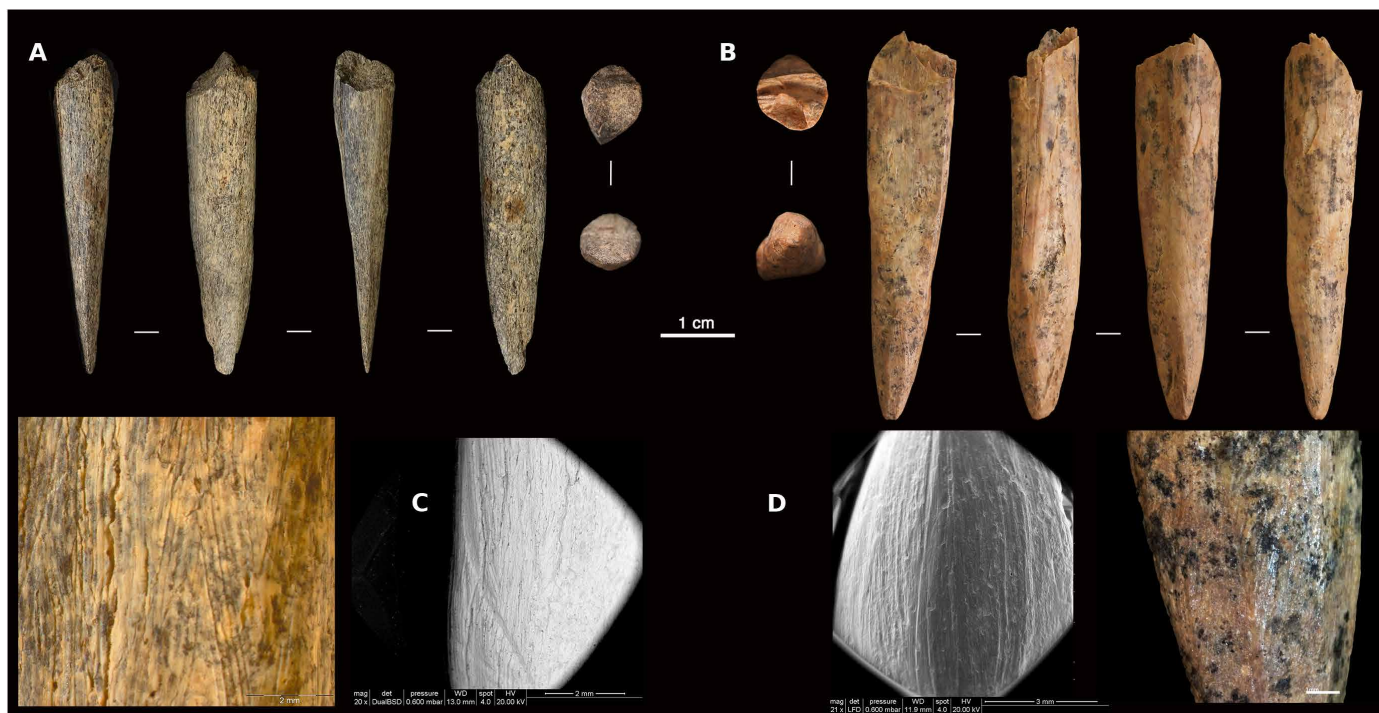
Two proximal fragments of assegai points with single-bevel bases have been recovered to date in the Malia shelter. One of them is made of deer antler from the LU-IV and the other, made of bone, comes from the LU-V. Neither of the two pieces has decorations on the shaft or on the platform of the bevel (Fig. 4 and text S10).

Despite its small size, the lithic and bone tools assemblages of LU-V show distinctive techno-typological features compatible with the Aurignacian technocomplex. The relevant presence of bladelet productions, including a carinated burin core on a large flake (Fig. 3.9) and a narrow-sided bladelet core that could also be classified as a carinated burin on classic typological grounds (Fig. 3.1) (46, 47), supports an Aurignacian attribution and strongly points to the Evolved Aurignacian. Although similar bladelet cores are found throughout the Upper Paleolithic sequence of Europe, carinated pieces used to produce bladelets, including burin cores and scraper



**Fig. 3. Selected lithic artifacts from LU-V of La Malia rock shelter.** 1: Narrow-sided bladelet core (carinated burin) on a hyaline quartz crystal (MG22/084-119-UE9-21). 2: Flint bladelet fragment (MG22/084-J19-UE4/UE9-25). 3: Flint blade fragment (MG22/084-119-UE9-38). 4: Flint-backed pointed bladelet (MG23/51-119-UE9-5). 5: Hyaline quartz blade/bladelet fragment (MG22/084-119-UE9-54). 6: Flint blade fragment showing thermal alterations (MG23/51-J19-UE9-16). 7: Small-nosed endscraper on a flint flake fragment (MG22/084-119-UE9-83). 8: Flint blade with discontinuous retouch (MG23/51-K19-UE9-9). 9: Carinated burin core on a flint flake (MG21/21-J19-UE9-36). 10: Sidescraper on a flint flake (MG18/46-J20-UE9-221). 11: Semicircumferential (prismatic) bidirectional blade core on quartzite (MG20/52-J20-UE9-1). Diacritic drawing of core 1: Phase 1: First removals to prepare the flaking surface are produced on a prismatic hyaline quartz crystal. Phase 2: Preparation of the notable platform perpendicular to a narrow face. Phase 3: Exploitation of the flaking surface to produce bladelet blanks. Diacritic drawing of core 2: Phase 1: Preparation of the flaking surface. Phase 2: Preparation of the notable platform. Phase 3: Corniche maintenance. Phase 4: Exploitation of the flaking surface from two opposing platforms used to produce elongated blanks, including blades and laminar flakes (however, the lower removals were likely produced to clean the hinges produced from the opposite platform). Arrows indicate the direction of the removals.





**Fig. 4. Bone industry recovered from the Malia rock shelter. (A)** Assegai of LU-IV made on deer antler (M20-UE4-I19-12). **(B)** Assegai of LU-V made on bone (M23-UE9-I21-4). **(C)** Scanning electron microscopy (SEM) image of the assegai made on the antler. **(D)** SEM image of the assegai made on bone.

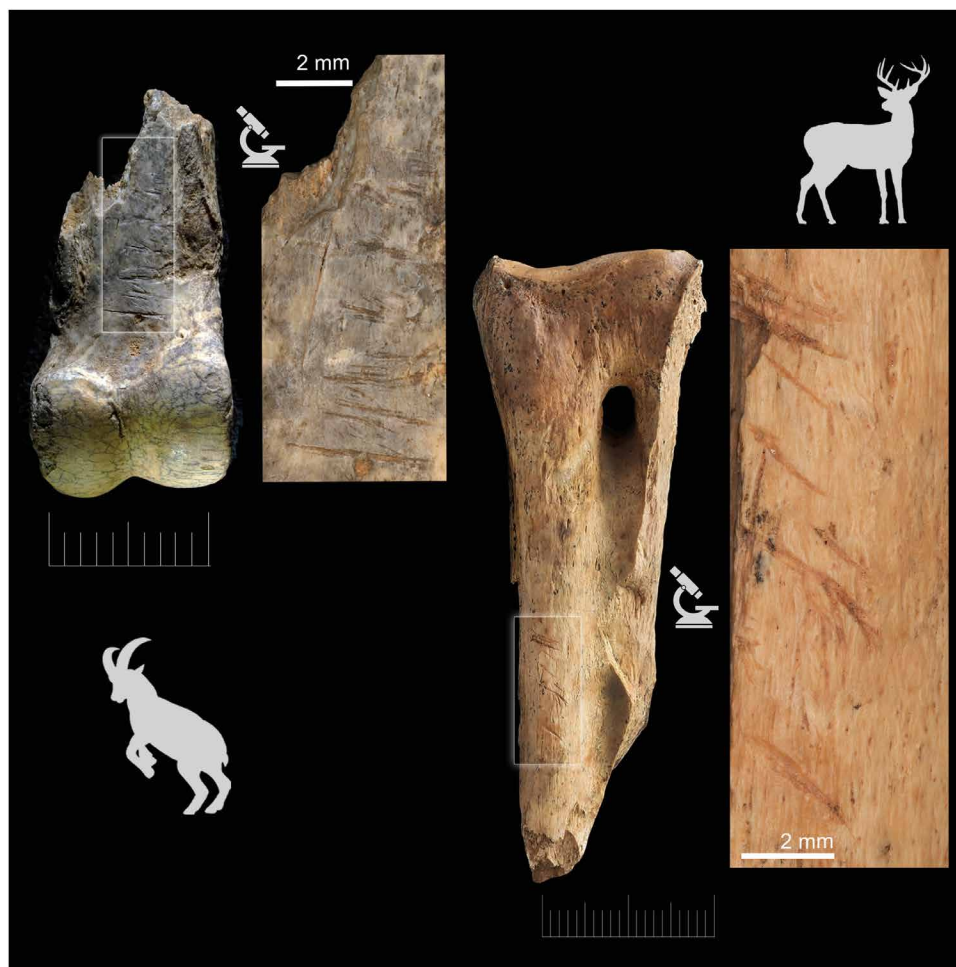
cores, are widespread in Aurignacian contexts, especially during its later phases (47, 48). The presence of a nosed endscraper, despite it being small-sized and hence atypical (Fig. 3.7), provides further support for the Aurignacian attribution of LU-V. The only distinctive features of the Evolved Aurignacian absent from LU-V are steep/scaled Aurignacian retouched blades and Dufour bladelets, as the only retouched bladelet found at the site shows semi-abrupt direct retouch (Fig. 3.7)—a type which is also present in Aurignacian contexts. The existence of a single-beveled bone point in this unit is also consistent with an Evolved Aurignacian attribution (text S10.2).

In addition to the lithic tools, faunal skeletal remains found in the Paleolithic units provide insight into human activity for both the LU-V and LU-IV archeological complexes. A detailed zooarcheological analysis of these units can be found in text S11. Both assemblages are well preserved, allowing meticulous anatomical and taxonomic identification, and a detailed examination of bone surfaces and fracture patterns. The faunal assemblages are dominated by ungulate species that represent typical human prey in Iberia during the Upper Paleolithic (*Cervus elaphus*, *Equus ferus*, Bovidae cf. *Bos primigenius*/*Bison priscus*, Caprinae, and mesovertebrates, such as Leporidae, the hares and rabbits' family). The high abundance of ungulates, particularly *C. elaphus* (red deer) and *E. ferus* (wild horses), is notable in both units. The absence of carnivorous mammal remains in the assemblage is notable. A ZooMS analysis has verified some of the initial taxonomic attributions and identified some bones classified as large-size mammals (text S14).

The two assemblages (LU-V and LU-IV) mainly exhibit traces of human activity (Fig. 5), accompanied by minor intrusions and contributions from nonhuman predators or natural processes. Anthropogenic modifications, including cut marks, breakage, and burning,

are prevalent in both units, particularly for macromammal remains (text S11). Cut marks on ungulate bones are abundant and reflect all stages of the butchery process, from skinning and evisceration to filleting. Signs of intensive defleshing and filleting and systematic breakage of bones for the extraction of marrow indicate the intensive use of the carcasses. In relation to this behavior, we have observed Artiodactyla (one from a red deer and one from Caprinae) phalanges that have been broken when they were still fresh to extract marrow. Modifications related to human activity are rounded out by the presence of thermal alterations on small remains (<4 cm), which are mainly carbonized and calcined. This is compatible with the combustion structures (hearths) present in unit LU-IV. Carnivore modification of macromammal remains affects only a very small proportion of the specimens and takes the form of tooth marks and signs of digestion (text S11). At an anatomical level, the macromammal assemblage is characterized by a high representation of fragments of long limb bone diaphyses and metapodials, which display characteristics of green and anthropogenic breakage (percussion pits, notches, and abrasions). Despite the open-air environment of the rock shelter, both the LU-IV and LU-V assemblages show minimal evidence of subaerial exposure. The absence of rounded bones in both assemblages further reinforces the lack of water-related influences. The mesovertebrate subgroup is mainly composed of complete bones. Leporidae represent a high percentage of remains and elements, though taphonomic indications lead us to rule out their relationship with human occupation. Signs of nonhuman predators, including scoring and beak/talon scratching, are present on the leporid remains.

The overall taphonomic picture of LU-V and LU-IV indicates a faunal assemblage of anthropogenic origin with very minor intrusions



**Fig. 5. Evidence of human occupation.** Selected bones with anthropogenic marks (cut marks and intentional fractures) in bones directly dated from the Aurignacian unit LU-V. Left: Proximal phalanx of small bovid with cut marks (MAL-29; MG22/084-119-UE9-29). Right: Metatarsal of a red deer with cut marks and percussion marks (MAL-34; M22/084-K19-UE4/9-5). A more diverse selection of bones with butchery marks is available in fig. S16. Three-dimensional models of these remains can be found in datasets S3 and S4. Scale bars in millimeters.

of material accumulated/modified by nonhuman (probably small) predators, agents, and processes. The exception is the mesovertebrate remains, which must be primarily natural accumulations, supplemented by minor input from raptors and/or small mammalian carnivores. There is no evidence of use, or alternating use, of the shelter by large carnivores and humans nor of alteration of the record by the former, which is common in Early Upper Paleolithic occupations in Iberia (49). In turn, inputs in the form of mesovertebrate remains correspond to human abandonment of the site, revealing the diachrony inherent in the formation of archeological levels.

### Paleoecological Inferences

A multifaceted approach has been adopted to investigate dominant climatic and ecological conditions at the Malia rock shelter, comprising micromorphological analysis, the examination of micro- and macrovertebrate faunal communities, the study of fossil pollen and charcoal remains, and the stable isotope analysis of ungulate assemblage.

Some useful paleoenvironmental information can be gleaned from isotopic analysis of the macromammal communities (text S14), particularly from the Equidae specimens, despite the small

sample size considered. No collagen  $\delta^{13}\text{C}$  value is lower than  $-22.5\%$ , suggesting that the herbivores were consuming C3 plants in a regular and relatively open landscape, according to Drucker *et al.* (50), outside the influence of the canopy effect (51).  $\delta^{13}\text{C}$  values are consistent over time, suggesting a limited change in tree cover, climate, or atmospheric carbon in the region during late MIS 3 to early MIS 2, and a predominantly open landscape prevailed. Typically, horses selected poor-quality, low-protein, high-fiber browse, resulting in relatively depleted  $\delta^{15}\text{N}$  and  $\delta^{13}\text{C}$  values (52) compared to red deer dietary habits. This pattern has been detected in other Paleolithic faunal assemblages in Iberia (53) and Central Europe (54, 55). Although there are limited sample sizes at the Malia site, the offset in  $\delta^{13}\text{C}$  values might indicate niche partitioning of equids and cervids feeding differently.

### Lithostratigraphic unit V

LU-V preserves evidence for eolian processes via the formation of loess deposits (text S5). However, the presence of large amounts of allochthonous black shales also indicates the influence of water-related processes. Considering that the most common microfacies in this unit are matrix-supported with a bimodal grain size distribution



favoring fine particles, surface runoff is interpreted as the dominant process (text S5). Occasional eolian and fluvial processes might have occurred, but they were partially reworked and disrupted by the prevailing runoff processes. These characteristics show that there were more humid periods in comparison to LU-IV, which resulted in significant water-related events.

Analysis of the microvertebrate communities from LU-V indicates the richest and most diverse small mammal fossil assemblages for the known Malia Paleolithic units (text S12). Arvicolinae rodent species from LU-V, such as the snow vole, *Chionomys nivalis*; the field, common, and pine voles *Microtus agrestis*, *Microtus arvalis*, and *Terricola pyrenaicus-gerbei*; and the Iberon or Cabrera's vole *Iberomys cabrerai*, are dwellers of humid meadows. A slight climatic deterioration from the bottom to the top of this stratigraphic unit is observed through the presence of the tundra vole (*Alexandromys oeconomicus*) in the upper part, and the decline in specimens of the Gliridae and Muridae species such as *Eliomys quercinus* and *Apodemus* respectively, both inhabitants of Mediterranean wood and shrublands.

The charcoal assemblage is dominated by thermophilus taxa, such as evergreen and deciduous *Quercus* (text S13.2, fig. S20, and table S22). These data show a general correspondence with the pollen assemblage (text S13.1, fig. S19, and table S21), for which *Quercus* is also the main taxa. Overall, unit LU-V indicates advantageous conditions were present locally 36,200 to 31,760 cal B.P., supporting increasing biodiversity, as well as a relatively mild Mediterranean climate.

#### Lithostratigraphic unit IV

A shift from loess-related to water-related processes, including fluvial and runoff events, is observed within LU-IV. The higher prevalence of eolian processes compared to the underlying unit indicates that aridity predominated during the formation of this unit, with occasional relatively extreme water-related events leading to the alternation of fluvial deposits. In addition, it appears that major roof collapse processes occurred throughout this level, possibly due to cryoclastic processes that intensified during cold periods (text S5).

LU-IV has fewer microvertebrate taxa, and the faunal assemblage indicates that climatic conditions were less favorable compared to LU-V. The species *A. oeconomicus* lives in wet tundra or alpine wet meadows, usually near water. Therefore, it indicates that tundra meadows and marshes were in the vicinity of the cave at the base of LU-IV. Other arvicoline rodents such as the snow vole, *Ch. nivalis*, and the Gerbe's vole or the Pyrenean pine vole, *T. pyrenaicus-gerbei*, as well as forest and shrub lands, such as the wood mouse, *Apodemus*, and the dormouse, *E. quercinus*, indicate meadows and wood/scrublands that were less rich than in the LU-V layer. Thus, alpine meadows, water bodies, and Mediterranean forests were present and located near the Malia rock shelter during the formation of both LUs. Noticeably, the Mediterranean and mild conditions, represented by the small mammal assemblages, deteriorate from the bottom to the top of the stratigraphic sequence (text S12).

This climatic trend toward colder and drier conditions is also evident in the pollen record, which is marked, above all, by a gradual loss of arboreal pollen, affecting thermomediterranean pines, in particular, toward the top of unit LU-IV and a greater presence of grasses (text S13.1), as the landscape became dominated by *Quercus*-Poaceae open woodlands. The increasing aridity and lower temperatures might also be identified in the charcoal record by the higher percentage of *Juniperus* sp. (in the base of LU-IV), while the colder

conditions are evident from the higher percentage of *Pinus* sp. *sylvestris-nigra* type (top of LU-IV) (text S13.2, figs. S19 and S20, and table S22).

#### DISCUSSION

All recorded evidence—stratigraphic, chronometric, techno-typological, and taphonomic—strongly supports the attribution of the LU-V archeological assemblage to the Aurignacian techno-cultural tradition and, consequently, to AMH (56). The stratigraphic position of LU-V, located at the bottom of the sedimentary sequence recorded to date and containing Upper Paleolithic artifacts (text S10, fig. S13, and dataset S2), suggests an early Upper Paleolithic age. This is further corroborated by the coherent and significant number of chronometric ages (Fig. 2), derived from radiocarbon determinations of anthropogenic-modified bones and charcoal pieces, as well as OSL assays of the sedimentary matrix, which place this unit in the 36,200– to 31,760-cal B.P. range. For all regions of the Iberian Peninsula where archeological assemblages from this period have been recorded, they mostly correspond to the advanced phases of the Aurignacian technocomplex, with a few cases of Early Gravettian starting about 35 ka to 33 ka cal B.P. in the Cantabrian region (8). The latest Mousterian is currently recorded between ~45 ka and 41 ka cal B.P. in the north and center of the Iberian Peninsula (10, 20), and the few cases attesting to a later persistence along the southern Mediterranean coasts and, to a lesser extent, in mid-southern Portugal, are not younger than ~37 ka cal B.P. (6). Likewise, Châtelperronian sites in Iberia are older than ~39 ka cal B.P. and are all found north of the Ebro basin (57). Concerning the Aurignacian, after its early arrival in the north by 43 ka to 42 ka cal B.P., this technocomplex was well established in the southern coastal regions of the peninsula by ~37 ka cal B.P. (6, 20, 58–61)—although earlier cases have been claimed for the sites of Bajondillo and Picareiro, these remain controversial (6, 58–65). To date, no Aurignacian contexts have been reported in central Iberia (5), and the most interior occurrence of this technocomplex is represented by the single site of Cardina-Salto do Boi (9), located at the very western fringe of the northern plateau (Fig. 1). Therefore, the presence of an Aurignacian occupation at the Malia rock shelter, right at the center of the peninsula, represents a significant discovery that changes our understanding of population dynamics in Iberia during the early Upper Paleolithic.

Malia rock shelter constitutes unequivocal evidence of the settlement of central Iberia during the early Upper Paleolithic and thus provides the oldest traces of AMH activity in the center of the Spanish plateau. More significantly, these data refute widely assumed interpretations of AMH population dynamics and initial settlement patterns of the Iberian Peninsula, as the whole Iberian hinterland has traditionally been considered a “Nobody's land” during the early and middle stages of the Upper Paleolithic due to ecological constraints (5).

The climatic and ecological conditions inferred from the small mammal assemblages, pollen, sedimentology, and stable isotope studies of the two Paleolithic units at the Malia shelter help to facilitate further understanding of MIS 3 and 2 paleoenvironments across this region. Precisely, favorable conditions in LU-V between 36 ka and 32 ka cal B.P. coincide with a period of human presence. This episode is preceded by much more severe climatic conditions in the center of the peninsula, which has been well documented at the nearby site of Portalón de Tejadilla located ~80 km away. Between 40.4 ka and 34.2 ka cal B.P., the inferred setting in the Segovian piedmont depicts an environment characterized by cold and arid conditions that enabled the establishment of steppe tundra ecosystems, predominantly inhabited by species adapted

to open landscapes but also including cold-adapted species such as the woolly rhinoceros and giant deer (19). These conditions contrast with those detected in the Malia rock shelter LU-V, whose conditions were undoubtedly less severe. Following a short period of more temperate and humid conditions within the Malia rock shelter sequence, a gradual cooling between 32 ka and 25 ka cal B.P. is detected in LU-IV, compatible with late MIS 3 peninsular records marking a trend toward cooler conditions, more open landscapes, and episodes of enhanced aridity (20). Wolf *et al.* (7) demonstrated a strong correlation between the sedimentation phases of loess deposited in the Tagus basin and North Atlantic marine dynamics. Specifically, a correlation is observed between the most intense Greenland stadials and Heinrich events. At Malia rock shelter, an increase in loess deposits is similarly detected in LU-IV compared to LU-V, correlating with loess deposit sediment unit 7 identified between  $31.7 \pm 2.6$  ka and  $28.4 \pm 2.4$  ka. Wolf *et al.* (7) suggested that the relationship between the most intense marine cold phases and the formation of loess in the Iberian interior during MIS 4, MIS 3, and MIS 2 was due to severe environmental aridity caused by a substantial decrease in the sea surface temperature of the North Atlantic compared to the Iberian margin, in turn reducing the transfer of moisture to the interior. This gradual increase in aridity led to a decrease in vegetation cover, together with stronger winds caused by greater temperature and pressure gradients, favoring an increase in wind dynamics and loess formation (7).

The directly dated cut-marked bones of ungulates indicate the presence of AMHs in inland Iberia during the early and mid-Upper Paleolithic. The paleoecological inferences suggest that human populations occupied Malia when climatic and ecological conditions were not particularly severe in terms of aridity and temperature. The change of these paleoclimatic conditions, marked by increased aridity, did not prevent human populations from reoccupying the territory maintaining similar subsistence strategies based on the hunting of red deer and horses. Malia LU-IV shows that these human populations occasionally, but recurrently, inhabited this area, probably during periods with the most available resources, and despite facing abrupt climate changes during MIS 3 and MIS 2, as also recorded at the nearby site of Peña Capón from at least  $\sim 26$  ka cal B.P. (5). Notwithstanding the lack of sites with evidence of human occupation in the central Iberia region between 40 ka and 27 ka cal B.P., the Castilian plateau does not appear to have been an ecogeographic barrier for *Homo sapiens*, at least not at specific times, as evidenced by the Malia rock shelter record. Therefore, population dynamics models proposed for this period, depicting an absence of human populations in the peninsular interior, should be revised in light of the Malia findings. These discoveries demonstrate that, when thoroughly investigated, the archeological record left by modern humans of the Upper Paleolithic in inland Iberia has still much to tell us.

## MATERIALS AND METHODS

Given the number and variety of techniques and disciplines used in this study, the materials and methods of each one of them are described in the corresponding section of the Supplementary Materials.

## Supplementary Materials

This PDF file includes:

Supplementary Text

Figs. S1 to S21

Tables S1 to S25

Legends for datasets S1 to S4

References

Other Supplementary Material for this manuscript includes the following:

Datasets S1 to S4

## REFERENCES AND NOTES

1. C. Posth, H. Yu, A. Ghalichi, H. Rougier, I. Crevecoeur, Y. Huang, H. Ringbauer, A. B. Rohrlach, K. Nägele, V. Villalba-Mouco, R. Radzeviciute, T. Ferraz, A. Stoessel, R. Tukhbatova, D. G. Drucker, M. Lari, A. Modi, S. Vai, T. Saupe, C. L. Scheib, G. Catalano, L. Pagani, S. Talamo, H. Fewlass, L. Klaric, A. Morala, M. Rué, S. Madelaine, L. Crépin, J. B. Caverne, E. Bogaev, S. Ricci, F. Boschini, P. Bayle, B. Maureille, F. le Brun-Ricalens, J. G. Bordes, G. Oxilia, E. Bortolini, O. Bignon-Lau, G. Debout, M. Orliac, A. Zazzo, V. Sparacello, E. Starnini, L. Sineo, J. van der Plicht, L. Pecqueur, G. Merceron, G. Garcia, J. M. Leuvrey, C. B. Garcia, A. Gómez-Olivencia, M. Poltowicz-Bobak, D. Bobak, M. le Luver, P. Storm, C. Hoffmann, J. Kabacinski, T. Filimonova, S. Shnaider, N. Berezina, B. González-Rabanal, M. R. González Morales, A. B. Marín-Arroyo, B. López, C. Alonso-Llamazares, A. Ronchitelli, C. Polet, I. Jadin, N. Cauwe, J. Soler, N. Coromina, I. Ruff, R. Cottiaux, G. Clark, L. G. Straus, M. A. Julien, S. Renhart, D. Talaa, S. Benazzi, M. Romandini, L. Amkreutz, H. Bocherens, C. Wißing, S. Villotte, J. F. L. de Pablo, M. Gómez-Puche, M. A. Esquembre-Bebia, P. Bodu, L. Smits, B. Souffri, R. Jankauskas, J. Kozakaitė, C. Cupillard, H. Benthien, K. Wehrberger, R. W. Schmitz, S. C. Feine, T. Schüller, C. Thevenet, D. Grigorescu, F. Lüth, A. Kotula, H. Piezonka, F. Schopper, J. Svoboda, S. Sázalová, A. Chizhevsky, A. Khokhlov, N. J. Conard, F. Valentin, K. Harvati, P. Semal, B. Jungklaus, A. Suvorov, R. Schulting, V. Moiseyev, K. Mannerman, A. Buzhilova, T. Terberger, D. Caramelli, E. Altena, W. Haak, J. Krause, Palaeogenomics of Upper Palaeolithic to Neolithic European hunter-gatherers. *Nature* **615**, 117–126 (2023).
2. A. Burke, M. Kageyama, G. Latombe, M. Fasel, M. Vrac, G. Ramstein, P. M. A. James, Risky business: The impact of climate and climate variability on human population dynamics in Western Europe during the Last Glacial Maximum. *Quat. Sci. Rev.* **164**, 217–229 (2017).
3. L. G. Straus, El Paleolítico Superior de la Península Ibérica. *Trab. Prehist.* **75**, 9–51 (2018).
4. N. Sala, A. Pablos, A. Rodríguez-Hidalgo, M. Arriolabengoa, M. Alcaraz-Castaño, M. Cubas, C. Posth, K. Nägele, A. Pantoja-Pérez, M. Arlegi, M. Rodríguez-Almagro, M. Conde-Valverde, G. Cuenca-Bescós, A. Arribas, A. Gómez-Olivencia, Cueva de los Torrejones revisited. New insights on the paleoecology of inland Iberia during the Late Pleistocene. *Quat. Sci. Rev.* **253**, 106765 (2021).
5. M. Alcaraz-Castaño, J. J. Alcolea-González, M. de Andrés-Herrero, S. Castillo-Jiménez, F. Cuartero, G. Cuenca-Bescós, M. Kehl, J. A. López-Sáez, L. Luque, S. Pérez-Díaz, R. Piqué, M. Ruiz-Alonso, G. C. Weniger, J. Yravedra, First modern human settlement recorded in the Iberian hinterland occurred during Heinrich Stadial 2 within harsh environmental conditions. *Sci. Rep.* **11**, 15161 (2021).
6. J. Zilhão, The late persistence of the Middle Palaeolithic and Neandertals in Iberia: A review of the evidence for and against the “Ebro Frontier” model. *Quat. Sci. Rev.* **270**, 107098 (2021).
7. D. Wolf, T. Kolb, K. Ryborz, S. Heinrich, I. Schäfer, R. Calvo, J. Sanchez, U. Hambach, R. Zech, L. Zöller, D. Faust, Evidence for strong relations between the upper Tagus loess formation (central Iberia) and the marine atmosphere off the Iberian margin during the last glacial period. *Quat. Res.* **101**, 84–113 (2021).
8. A. B. Marín-Arroyo, J. Rios-Garaizar, L. G. Straus, J. R. Jones, M. de la Rasilla, M. R. González Morales, M. Richards, J. Altuna, K. Mariezkurrena, D. Ocio, Chronological reassessment of the Middle to Upper Paleolithic transition and Early Upper Paleolithic cultures in Cantabrian Spain. *PLOS ONE* **13**, e0194708 (2018).
9. T. Aubry, L. A. Dimuccio, A. F. Barbosa, L. Luís, A. T. Santos, M. Silvestre, K. J. Thomsen, E. Rades, M. Autzen, A. S. Murray, Timing of the Middle-to-Upper Palaeolithic transition in the Iberian inland (Cardina-Salto do Boi, C6a Valley, Portugal). *Quat. Res.* **98**, 81–101 (2020).
10. D. Wolf, T. Kolb, M. Alcaraz-Castaño, S. Heinrich, P. Baumgart, R. Calvo, J. Sánchez, K. Ryborz, I. Schäfer, M. Bliedtner, R. Zech, L. Zöller, D. Faust, Climate deteriorations and Neanderthal demise in interior Iberia. *Sci. Rep.* **8**, 7048 (2018).
11. L. Straus, N. Bicho, A. Winegardner, The Upper Palaeolithic settlement of Iberia: First-generation maps. *Antiquity* **74**, 553–566 (2000).
12. L. G. Straus, The human occupation of southwestern Europe during the Last Glacial Maximum. *J. Anthropol. Res.* **71**, 465–492 (2015).
13. M. Alcaraz-Castaño, Central Iberia around the Last Glacial Maximum. *J. Anthropol. Res.* **71**, 565–578 (2015).
14. M. Alcaraz-Castaño, MULTIPALEOIBERIA: Hacia un nuevo escenario sobre las dinámicas de poblamiento y adaptaciones culturales de los últimos neandertales y primeros humanos modernos en el interior de la península ibérica. *Trab. Prehist.* **80**, e03 (2023).
15. K. Klein, G. C. Weniger, P. Ludwig, C. Stepanek, X. Zhang, C. Wegener, Y. Shao, Assessing climatic impact on transition from Neanderthal to anatomically modern human

- population on Iberian Peninsula: A macroscopic perspective. *Sci. Bull.* **68**, 1176–1186 (2023).
16. M. Staubwasser, V. Drăgușin, B. P. Onac, S. Assonov, V. Ersek, D. L. Hoffmann, D. Veres, Impact of climate change on the transition of Neanderthals to modern humans in Europe. *Proc. Natl. Acad. Sci. U.S.A.* **115**, 9116–9121 (2018).
  17. M. F. Sánchez Goñi, in *Updating Neanderthals*, F. Romagnoli, F. Rivals, S. Benazzi, Eds. (Academic Press, 2022), pp. 17–38.
  18. D. Álvarez-Alonso, M. D. Andrés-Herrero, A. Díez-Herrero, J. A. Rojo-Hernández, Análisis geoarqueológico de las ocupaciones musterienses en el valle alto del río Eresma: el Abrigo del Molino (Segovia, España). *Bol. Geol. Miner.* **129**, 153–182 (2018).
  19. N. Sala, A. Pablos, A. Gómez-Olivencia, A. Sanz, M. Villalba, A. Pantoja-Pérez, C. Laplana, J. L. Arsuaga, M. Algaba, Central Iberia in the middle MIS 3. Paleocological inferences during the period 34–40 cal kyr BP. *Quat. Sci. Rev.* **228**, 106027 (2020).
  20. M. Vidal-Cordasco, D. Ocio, T. Hickler, A. B. Marín-Arroyo, Ecosystem productivity affected the spatiotemporal disappearance of Neanderthals in Iberia. *Nat. Ecol. Evol.* **6**, 1644–1657 (2022).
  21. M. Fernández-García, M. Vidal-Cordasco, J. R. Jones, A. B. Marín-Arroyo, Reassessing palaeoenvironmental conditions during the Middle to Upper Palaeolithic transition in the Cantabrian region (Southwestern Europe). *Quat. Sci. Rev.* **301**, 107928 (2023).
  22. M. Alcaraz-Castaño, J. Alcolea-González, M. Kehl, R. M. Albert, J. Baena-Preysler, R. de Balbín-Behrmann, F. Cuartero, G. Cuenca-Bescós, F. Jiménez-Barredo, J. A. López-Sáez, R. Piqué, D. Rodríguez-Antón, J. Yravedra, G. C. Weniger, A context for the last Neanderthals of interior Iberia: Los Casares cave revisited. *PLOS ONE* **12**, e0180823 (2017).
  23. M. Alcaraz-Castaño, J. J. Alcolea-Gonzales, G. C. Weniger, I. A. Figueras, A. A. Briebea, J. B. Preysler, G. De Balbín-Behrmann, Neanderthals y humanos modernos en Guadalajara. *Boletín de la Asociación de Amigos del Museo de Guadalajara* **8**, 13–44 (2017).
  24. M. Alcaraz-Castaño, M. López-Recio, F. Tapias, F. Cuartero, J. Baena, B. Ruiz-Zapata, J. Morán, A. Pérez-González, M. Santonja, The human settlement of Central Iberia during MIS 2: New technological, chronological and environmental data from the Solutrean workshop of Las Delicias (Manzanares River valley, Spain). *Quat. Int.* **431**, 104–124 (2017).
  25. M. Kehl, D. Álvarez-Alonso, M. de Andrés-Herrero, A. Díez-Herrero, N. Klasen, J. Rethemeyer, G. C. Weniger, The rock shelter Abrigo del Molino (Segovia, Spain) and the timing of the late Middle Paleolithic in Central Iberia. *Quat. Res.* **90**, 180–200 (2018).
  26. M. Kehl, C. Burrow, A. Hilgers, M. Navazo, A. Pastoors, G. C. Weniger, R. Wood, J. F. Jordá Pardo, Late Neanderthals at Jarama VI (central Iberia)? *Quat. Res.* **80**, 218–234 (2013).
  27. D. Álvarez-Alonso, J. C. D. Fernández-Lomana, M. García-Díez, J. F. J. Pardo, R. R. Santiago, Los Enebrales rock-shelter (Tamajón, Guadalajara, Spain): First Gravettian site in central Iberia. *J. Archaeol. Sci. Rep.* **53**, 104340 (2024).
  28. M. Alcaraz-Castaño, J. Alcolea-González, R. Balbín-Behrmann, M. Kehl, G.-C. Weniger, in *Human Adaptations to the Last Glacial Maximum: The Solutrean and Its Neighbors*, I. Schmidt, J. Cascalheira, N. Bicho, G.-C. Weniger, Eds. (Cambridge Scholars Publishing, 2019), vol. 3rd International Conference on the Solutrean, pp. 148–170.
  29. P. P. Hernáiz-Huerta, F. López Olmedo, P. Cabra Gil, L. R. Rodríguez Fernández. Mapa Geológico de España, Hoja 459 - Tamajón. Instituto Geológico y Minero de España (1994).
  30. J. Barea, J. Rejos, Últimas exploraciones en el karst de Tamajón (Guadalajara). *Boletín del Grupo de Espeleología SECIJA de Alcobendas* **2**, 47–53 (2000).
  31. Z. Jacobs, G. A. T. Duller, A. G. Wintle, Interpretation of single grain  $D_e$  distributions and calculation of  $D_e$ . *Radiat. Meas.* **41**, 264–277 (2006).
  32. R. M. Bailey, L. J. Arnold, Statistical modelling of single grain quartz  $D_e$  distributions and an assessment of procedures for estimating burial dose. *Quat. Sci. Rev.* **25**, 2475–2502 (2006).
  33. M. Demuro, L. J. Arnold, J. González-Urquijo, T. Lazuen, M. Frochoso, Chronological constraint of Neanderthal cultural and environmental changes in southwestern Europe: MIS 5–MIS 3 dating of the Axlor site (Biscay, Spain). *J. Quat. Sci.* **38**, 891–920 (2023).
  34. L. J. Arnold, R. G. Roberts, Stochastic modelling of multi-grain equivalent dose ( $D_e$ ) distributions: Implications for OSL dating of sediment mixtures. *Quat. Geochronol.* **4**, 204–230 (2009).
  35. L. J. Arnold, R. G. Roberts, R. D. E. MacPhee, E. Willerslev, A. N. Tikhonov, F. Brock, Optical dating of perennially frozen deposits associated with preserved ancient plant and animal DNA in north-central Siberia. *Quat. Geochronol.* **3**, 114–136 (2008).
  36. L. J. Arnold, M. Duval, M. Demuro, N. A. Spooner, M. Santonja, A. Pérez-González, OSL dating of individual quartz ‘supergrains’ from the Ancient Middle Palaeolithic site of Cuesta de la Bajada, Spain. *Quat. Geochronol.* **36**, 78–101 (2016).
  37. L. J. Arnold, M. Demuro, N. A. Spooner, G. J. Prideaux, M. C. McDowell, A. B. Camens, E. H. Reed, J. M. Parés, J. L. Arsuaga, J. M. Bermúdez de Castro, E. Carbonell, Single-grain TT-OSL bleaching characteristics: Insights from modern analogues and OSL dating comparisons. *Quat. Geochronol.* **49**, 45–51 (2019).
  38. L. J. Arnold, M. Demuro, R. Power, Priya, M. Duval, V. Guilarte, R. Weij, J. Woodhead, L. White, S. Bourne, E. H. Reed, Examining sediment infill dynamics at Naracoorte cave megafauna sites using multiple luminescence dating signals. *Quat. Geochronol.* **70**, 101301 (2022).
  39. L. J. Arnold, R. G. Roberts, Paper I—Optically stimulated luminescence (OSL) dating of perennially frozen deposits in north-central Siberia: OSL characteristics of quartz grains and methodological considerations regarding their suitability for dating. *Boreas* **40**, 389–416 (2011).
  40. L. J. Arnold, R. G. Roberts, R. F. Galbraith, S. B. DeLong, A revised burial dose estimation procedure for optical dating of young and modern-age sediments. *Quat. Geochronol.* **4**, 306–325 (2009).
  41. R. F. Galbraith, R. G. Roberts, G. M. Laslett, H. Yoshida, J. M. Olley, Optical dating of single and multiple grains of quartz from Jinmium rock shelter, northern Australia: Part I, experimental design and statistical models\*. *Archaeometry* **41**, 339–364 (1999).
  42. M. Navazo-Ruiz, A. Benito-Calvo, R. Alonso-Alcalde, P. Alonso, H. de la Fuente, M. Santamaría, C. Santamaría, A. Álvarez-Vena, L. J. Arnold, M. J. Iriarte-Chiapusso, M. Demuro, M. Lozano, J. E. Ortiz, T. Torres, Late Neanderthal subsistence strategies and cultural traditions in the northern Iberia Peninsula: Insights from Prado Vargas, Burgos, Spain. *Quat. Sci. Rev.* **254**, 106795 (2021).
  43. J. Zilhão, D. E. Angelucci, M. A. Igreja, L. J. Arnold, E. Badal, P. Callapez, J. L. Cardoso, F. d’Errico, J. Daura, M. Demuro, M. Deschamps, C. Dupont, S. Gabriel, D. L. Hoffmann, P. Legoinha, H. Matias, A. M. Monge Soares, M. Nabais, P. Portela, A. Queffelec, F. Rodrigues, P. Souto, Last Interglacial Iberian Neanderthals as fisher-hunter-gatherers. *Science* **367**, eaaz7943 (2020).
  44. L. J. Arnold, M. Demuro, M. Navazo, A. Benito-Calvo, A. Pérez-González, OSL dating of the Middle Palaeolithic Hotel California site, Sierrade Atapuerca, north-central Spain. *Boreas* **42**, 285–305 (2013).
  45. C. Bronk Ramsey, Bayesian analysis of radiocarbon dates. *Radiocarbon* **51**, 337–360 (2009).
  46. L. Brou, F. Le Brun-Ricalens, in *Burins Préhistorique: Formes, Fonctionnements, Fonctions*, M. de Araujo Igreja, J.-P. Bracco, F. Le Brun-Ricalens, Eds. (ArchéoLogiques, 2006), vol. 2, pp. 225–238.
  47. P.-Y. Demars, Les grattoirs carénés et à museau, les burins busqués et carénés, les pièces nucléiformes dans le bassin de Brive: Approche stylistique. *Bulletin de la Société Préhistorique Française* **79**, 341–368 (1982).
  48. F. Le Brun-Ricalens, Productions lamellaires attribuées à l’Aurignacien: Chaînes opératoires et perspectives technologiques, in *Actes du XI<sup>e</sup> congrès de l’UISPP, Liège, 2–8 Septembre 2001, Session 6 – Paléolithique Supérieur, Colloque C6.7* (Musée national d’Histoire et d’Art, Luxembourg, 2005).
  49. A. B. Marín-Arroyo, A. Sanz-Royo, What Neanderthals and AMH ate: Reassessment of the subsistence across the Middle–Upper Palaeolithic transition in the Vasco-Cantabrian region of SW Europe. *J. Quat. Sci.* **37**, 320–334 (2022).
  50. D. G. Drucker, K. A. Hobson, E. Szuma, H. Bocherens, Can carbon-13 in large herbivores reflect the canopy effect in temperate and boreal ecosystems? Evidence from modern and ancient ungulates. *Palaeogeogr. Palaeoclimatol. Palaeoecol.* **266**, 69–82 (2008).
  51. N. J. Van der Merwe, E. Medina, The canopy effect, carbon isotope ratios and foodwebs in Amazonia. *J. Archaeol. Sci.* **18**, 249–259 (1991).
  52. M. Sponheimer, T. Robinson, L. Ayliffe, B. Roeder, J. Hammer, B. Passey, A. West, T. Cerling, D. Dearing, J. Ehleringer, Nitrogen isotopes in mammalian herbivores: Hair  $\delta^{15}N$  values from a controlled feeding study. *Int. J. Osteoarchaeol.* **13**, 80–87 (2003).
  53. J. R. Jones, M. P. Richards, L. G. Straus, H. Reade, J. Altuna, K. Mariezkurrena, A. B. Marín-Arroyo, Changing environments during the Middle–Upper Palaeolithic transition in the eastern Cantabrian Region (Spain): Direct evidence from stable isotope studies on ungulate bones. *Sci. Rep.* **8**, 14842 (2018).
  54. K. Britton, S. Gaudzinski-Windheuser, W. Roebroeks, L. Kindler, M. P. Richards, Stable isotope analysis of well-preserved 120,000-year-old herbivore bone collagen from the Middle Palaeolithic site of Neumark-Nord 2, Germany reveals niche separation between bovines and equids. *Palaeogeogr. Palaeoclimatol. Palaeoecol.* **333–334**, 168–177 (2012).
  55. H. Bocherens, D. G. Drucker, S. Madelaine, Evidence for a  $^{15}N$  positive excursion in terrestrial foodwebs at the Middle to Upper Palaeolithic transition in south-western France: Implications for early modern human palaeodiet and palaeoenvironment. *J. Hum. Evol.* **69**, 31–43 (2014).
  56. A. Picin, A. Moroni, S. Benazzi, in *Updating Neanderthals: Understanding Behavioural Complexity in the Late Middle Palaeolithic*, F. Romagnoli, F. Rivals, S. Benazzi, Eds. (Academic Press, 2022), pp. 321–347.
  57. J. Rios-Garaizar, E. Iriarte, L. J. Arnold, L. Sánchez-Romero, A. B. Marín-Arroyo, A. San Emeterio, A. Gómez-Olivencia, C. Pérez-Garrido, M. Demuro, I. Campaña, L. Bourguignon, A. Benito-Calvo, M. J. Iriarte, A. Aranburu, A. Arranz-Otaegi, D. Garate, M. Silva-Gago, C. Lahaye, I. Ortega, The intrusive nature of the Châtelperronian in the Iberian Peninsula. *PLOS ONE* **17**, e0265219 (2022).
  58. M. Cortés, Las industrias líticas del Paleolítico Medio y del Paleolítico Superior, in *Cueva de Bajondillo (Torremolinos). Secuencia Cronocultural Paleoambiental del Cuaternario*



- Reciente en la Bahía de Málaga* (Centro de Ediciones de la Diputación de Málaga, 2007), pp. 171–446.
59. R. E. Wood, A. Arrizabalaga, M. Camps, S. Fallon, M. J. Iriarte-Chiapusso, R. Jones, J. Maroto, M. de la Rasilla, D. Santamaría, J. Soler, N. Soler, A. Villaluenga, T. F. G. Higham, The chronology of the earliest Upper Palaeolithic in northern Iberia: New insights from L'Arbreda, Labeko Koba and La Viña. *J. Hum. Evol.* **69**, 91–109 (2014).
  60. J. Zilhão, The Aurignacian of Portugal: A reappraisal. *Zona Arqueol.* **7**, 373–394 (2006).
  61. V. Villaverde, A. Sanchis, E. Badal, M. Á. Bel, M. M. Bergadá, A. Eixea, P. M. Guillem, Á. Martínez-Alfaro, R. Martínez-Valle, C. M. Martínez-Varea, C. Real, P. Steier, E. M. Wild, Cova de les Malladetes (Valencia, Spain): New insights about the Early Upper Palaeolithic in the Mediterranean Basin of the Iberian Peninsula. *J. Paleol. Archaeol.* **4**, 5 (2021).
  62. M. Cortés-Sánchez, F. J. Jiménez-Espejo, M. D. Simón-Vallejo, C. Stringer, M. C. Lozano Francisco, A. García-Alix, J. L. Vera Peláez, C. P. Odriozola, J. A. Riquelme-Cantal, R. Parrilla Giráldez, A. Maestro González, N. Ohkouchi, A. Morales-Muñiz, An early Aurignacian arrival in southwestern Europe. *Nat. Ecol. Evol.* **3**, 207–212 (2019).
  63. L. Anderson, N. Reynolds, N. Teyssandier, No reliable evidence for a very early Aurignacian in Southern Iberia. *Nat. Ecol. Evol.* **3**, 713–713 (2019).
  64. J. A. Haws, M. M. Benedetti, N. F. Bicho, J. Cascalheira, M. G. Ellis, M. M. Carvalho, L. Friedl, T. Pereira, S. Talamo, The early Aurignacian at Lapa do Picareiro really is that old: A comment on 'The late persistence of the Middle Palaeolithic and Neandertals in Iberia: A review of the evidence for and against the "Eburo Frontier" model'. *Quat. Sci. Rev.* **274**, 107261 (2021).
  65. J. A. Haws, M. M. Benedetti, S. Talamo, N. Bicho, J. Cascalheira, M. G. Ellis, M. M. Carvalho, L. Friedl, T. Pereira, B. K. Zinsious, The early Aurignacian dispersal of modern humans into westernmost Eurasia. *Proc. Natl. Acad. Sci. U.S.A.* **117**, 25414–25422 (2020).
  66. J. Barea, "Geomorfología y evolución paleoclimática durante el Cuaternario a partir del estudio de los macizos kársticos de los bordes del Sistema Central y de Valporquero, León," thesis, Universidad Complutense de Madrid (2001).
  67. A. Benito-Calvo, A. Pérez-González, Las superficies de erosión neógenas en la zona de transición entre la Cordillera Ibérica y el Sistema Central (Guadalajara, España). *Revista de la Sociedad Geológica de España* **23**, 145–156 (2010).
  68. V. Cabrera, F. Bernaldo de Quirós, Abrigo de Tamajón. *Arqueología* **79**, 113 (1979).
  69. A. Arribas, J. C. Díez, F. J. Jordá, in *Arqueología en Guadalajara*, R. Balbín, J. Valiente, M. T. Musat, Eds. (Patrimonio Histórico-Arqueología Castilla-La Mancha, 1995), vol. 12, pp. 97–110.
  70. A. Arribas, C. Díez Fernández-Lomana, J. F. Jordá Pardo, Primeras ocupaciones en los depósitos pleistocenos de la cueva de los Torrejones (Sistema Central español, Tamajón, Guadalajara): Litografía y actividad biológica. *Cuatern. y Geomorfol.* **11**, 55–66 (1997).
  71. C. Díez Fernández-Lomana, J. F. Jordá Pardo, A. Arribas Herrera, Torrejones (Tamajón, Guadalajara, Spain). A hyaena den on human occupation, in *Economie Préhistorique: Les Comportements de Subsistance au Paléolithique* (Editions APDCA, 1998), pp. 63–72.
  72. A. Pablos, N. Sala, A. Arribas, Taxonomic reassignment of the Paleolithic human navicular from Cueva de los Torrejones (Guadalajara, Spain). *Archaeol. Anthropol. Sci.* **10**, 1867–1880 (2018).
  73. A. Pablos, N. Sala, A. Arribas, Direct dating of the human navicular from the cueva de los torrejones (guadalajara, spain). *Radiocarbon* **63**, 213–222 (2021).
  74. E. C. Harris, *Principles of Archaeological Stratigraphy*. (Academic Press, 1989).
  75. A. Canals, J. Vallverdú, E. Carbonell, New archaeo-stratigraphic data for the TD6 level in relation to Homo antecessor (Lower Pleistocene) at the site of Atapuerca, north-central Spain. *Geoarchaeology* **18**, 481–504 (2003).
  76. R. A. Obregón Labrador, "Estratigrafía cultural en el nivel TD10-1 de Gran Dolina, Sierra de Atapuerca, (Burgos): secuencia arqueostratigráfica de los asentamientos contenidos en sedimento homogéneo," thesis, Universidad de Burgos (2012).
  77. L. Sánchez-Romero, A. Canals, A. Pérez-González, B. Márquez, M. Mosquera, T. Karampaglidis, J. L. Arsuaga, E. Baquedano, Deshaciendo el palimpsesto: Una aproximación a la secuencia cultural de la ocupación neandertal del abrigo de Navalmaillo, Pinilla del Valle (España). *Trab. Prehist.* **74**, 225–237 (2017).
  78. A. Canals, Á. Galobart, Arqueostratigrafía y reconstrucción de la dinámica sedimentaria en los yacimientos del Pleistoceno inferior de Incarcal I e Incarcal V. *Paleontol. i evol.* **34**, 221–232 (2003).
  79. A. Arteaga-Brieba, L. A. Courtenay, L. Cobo-Sánchez, A. Rodríguez-Hidalgo, P. Saladié, A. Ollé, M. Mosquera, An archaeostratigraphic consideration of the Gran Dolina TD10.2 cultural sequence from a quantitative approach. *Quatern. Sci. Rev.* **309**, 108033 (2023).
  80. A. Bevan, in *Archaeological Spatial Analysis: A Methodological Guide*, M. Gillings, P. Hacigüzeller, G. Lock, Eds. (Routledge, ed. 1, 2020). 10.4324/9781351243858.
  81. P. Diggle, A kernel method for smoothing point process data. *J. R. Stat. Soc. Ser. C. Appl. Stat.* **34**, 138–147 (1985).
  82. R Core Team, R: A Language and Environment for Statistical Computing (R Foundation for Statistical Computing, 2021); www.R-project.org/.
  83. A. Baddeley, E. Rubak, R. Turner, *Spatial Point Patterns: Methodology and Applications with R*. (CRC press, 2015).
  84. A. Salvador, *International Stratigraphic Guide: A Guide to Stratigraphic Classification, Terminology, and Procedure*. (Geological Society of America, 1994).
  85. H. J. T. Weerts, W. E. Westerhoff, Section 3: Quaternary stratigraphy, in *Encyclopedia of Quaternary Sciences*, S. A. Elias, Ed. (Elsevier, 2007), pp. 2826–2840.
  86. P. D. Hughes, Geomorphology and quaternary stratigraphy: The roles of morpho-, litho-, and allostratigraphy. *Geomorphology* **123**, 189–199 (2010).
  87. F. Brock, T. Higham, P. Ditchfield, C. Bronk Ramsey, Current pretreatment methods for AMS radiocarbon dating at the Oxford Radiocarbon Accelerator Unit (ORAU). *Radiocarbon* **52**, 103–112 (2010).
  88. F. Brock, C. Bronk Ramsey, T. Higham, Quality assurance of ultrafiltered bone dating. *Radiocarbon* **49**, 187–192 (2007).
  89. T. Higham, K. Douka, R. Wood, C. B. Ramsey, F. Brock, L. Basell, M. Camps, A. Arrizabalaga, J. Baena, C. Barroso-Ruiz, C. Bergman, C. Boitard, P. Boscatto, M. Caparrós, N. J. Conard, C. Draily, A. Froment, B. Galván, P. Gambassini, A. García-Moreno, S. Grimaldi, P. Haesaerts, B. Holt, M. J. Iriarte-Chiapusso, A. Jelinek, J. F. Jordá Pardo, J. M. Maíllo-Fernández, A. Marom, J. Maroto, M. Menéndez, L. Metz, E. Morin, A. Moroni, F. Negrino, E. Panagopoulou, M. Peresani, S. Pirson, M. de la Rasilla, J. Riel-Salvatore, A. Ronchitelli, D. Santamaría, P. Semal, L. Slimak, J. Soler, N. Soler, A. Villaluenga, R. Pinhas, R. Jacobi, The timing and spatiotemporal patterning of Neanderthal disappearance. *Nature* **512**, 306–309 (2014).
  90. P. J. Reimer, W. E. N. Austin, E. Bard, A. Bayliss, P. G. Blackwell, C. Bronk Ramsey, M. Butzin, H. Cheng, R. L. Edwards, M. Friedrich, S. M. Grootes, T. P. Guilderson, I. Hajdas, T. J. Heaton, A. G. Hogg, K. A. Hughen, B. Kromer, P. W. Manning, R. Muscheler, J. G. Palmer, C. Pearson, J. van der Plicht, R. W. Reimer, D. A. Richards, E. M. Scott, J. R. Southon, C. S. M. Turney, L. Wacker, F. Adolphi, U. Büntgen, M. Capano, S. M. Fahrni, A. Fogtmann-Schulz, R. Friedrich, P. Köhler, S. Kudsk, F. Miyake, J. Olsen, F. Reinig, M. Sakamoto, A. Sookdeo, S. Talamo, The INTCAL20 Northern hemisphere radiocarbon age calibration curve (0–55 Cal BP). *Radiocarbon* **62**, 725–757 (2020).
  91. S. H. Ambrose, Preparation and characterization of bone and tooth collagen for isotopic analysis. *J. Archaeol. Sci.* **17**, 431–451 (1990).
  92. G. J. Van Klinken, Bone collagen quality indicators for palaeodietary and radiocarbon measurements. *J. Archaeol. Sci.* **26**, 687–695 (1999).
  93. C. B. Ramsey, T. Higham, P. Leach, Towards high-precision AMS: Progress and Limitations. *Radiocarbon* **46**, 17–24 (2004).
  94. M. Demuro, L. J. Arnold, D. G. Froese, R. G. Roberts, OSL dating of loess deposits bracketing Sheep Creek tephra beds, northwest Canada: Dim and problematic single-grain OSL characteristics and their effect on multi-grain age estimates. *Quat. Geochronol.* **15**, 67–87 (2013).
  95. L. J. Arnold, M. Duval, C. Falguères, J. J. Bahain, M. Demuro, Portable gamma spectrometry with cerium-doped lanthanum bromide scintillators: Suitability assessments for luminescence and electron spin resonance dating applications. *Radiat. Meas.* **47**, 6–18 (2012).
  96. J. R. Prescott, J. T. Hutton, Cosmic ray contributions to dose rates for luminescence and ESR dating: Large depths and long-term time variations. *Radiat. Meas.* **23**, 497–500 (1994).
  97. J. M. Bowler, H. Johnston, J. M. Olley, J. R. Prescott, R. G. Roberts, W. Shawcross, N. A. Spooner, New ages for human occupation and climatic change at Lake Mungo, Australia. *Nature* **421**, 837–840 (2003).
  98. V. Mejdahl, Thermoluminescence dating: Beta-dose attenuation in quartz grains. *Archaeometry* **21**, 61–72 (1979).
  99. B. J. Brennan, Beta doses to spherical grains. *Radiat. Meas.* **37**, 299–303 (2003).
  100. M. J. Aitken, in *Thermoluminescence Dating*. (Academic Press, 1985), p. 359.
  101. M. L. Readhead, Thermoluminescence dose rate data and dating equations for the case of disequilibrium in the decay series. *Int. J. Rad. Appl. Instrum. D.* **13**, 197–207 (1987).
  102. M. Duval, L. J. Arnold, Field gamma dose-rate assessment in natural sedimentary contexts using LaBr<sub>3</sub>(Ce) and NaI(Tl) probes: A comparison between the "threshold" and "windows" techniques. *Appl. Radiat. Isot.* **74**, 36–45 (2013).
  103. L. Bøtter-Jensen, V. Mejdahl, Assessment of beta dose-rate using a GM multiscaler system. *Int. J. Rad. Appl. Instrum. D.* **14**, 187–191 (1988).
  104. G. Guérin, N. Mercier, G. Adamiec, Dose-rate conversion factors: Update. *Ancient TL* **29**, 5–8 (2011).
  105. R. J. Lewis, J. Tibby, L. J. Arnold, C. Barr, J. Marshall, G. McGregor, P. Gadd, Y. Yokoyama, Insights into subtropical Australian aridity from Welsby Lagoon, north Stradbroke Island, over the past 80,000 years. *Quat. Sci. Rev.* **234**, 106262 (2020).
  106. V. Mejdahl, Internal radioactivity in quartz and feldspar grains. *Ancient TL* **5**, 10–17 (1987).
  107. S. M. Pawley, R. M. Bailey, J. Rose, B. S. P. Moorlock, R. J. O. Hamblin, S. J. Booth, J. R. Lee, Age limits on Middle Pleistocene glacial sediments from OSL dating, north Norfolk, UK. *Quat. Sci. Rev.* **27**, 1363–1377 (2008).
  108. J. Rees-Jones, Optical dating of young sediments using fine-grain quartz. *Ancient TL* **13**, 9–14 (1995).
  109. J. Rees-Jones, M. S. Tite, Optical dating results for British archaeological sediments. *Archaeometry* **39**, 177–187 (1997).

110. G. A. T. Duller, Distinguishing quartz and feldspar in single grain luminescence measurements. *Radiat. Meas.* **37**, 161–165 (2003).
111. M. Demuro, L. J. Arnold, A. Aranburu, A. Gómez-Olivencia, J. L. Arsuaga, Single-grain OSL dating of the Middle Palaeolithic site of Galería de las Estatuas, Atapuerca (Burgos, Spain). *Quat. Geochronol.* **49**, 254–261 (2019).
112. R. Galbraith, A note on the variance of a background-corrected OSL count. *Ancient TL* **20**, 49–51 (2002).
113. G. A. T. Duller, Assessing the error on equivalent dose estimates derived from single aliquot regenerative dose measurements. *Ancient TL* **25**, 15–24 (2007).
114. V. Hansen, A. Murray, J.-P. Buylaert, E.-Y. Yeo, K. Thomsen, A new irradiated quartz for beta source calibration. *Radiat. Meas.* **81**, 123–127 (2015).
115. P. J. Potts, M. Thompson, S. R. N. Chenery, P. C. Webb, H. U. Kasper, “Geopt13—An international proficiency test for analytical geochemistry laboratories” (Report on Round 13/July 2003 (Köln Loess), International Association of Geoanalyst, 2003).
116. O. C. Allkofer, *Introduction to Cosmic Radiation* (Verlag Karl Thiemiig, 1974).
117. M. A. Smith, J. R. Prescott, M. J. Head, Comparison of  $^{14}\text{C}$  and luminescence chronologies at puritjarra rock shelter, central Australia. *Quat. Sci. Rev.* **16**, 299–320 (1997).
118. Z. Jacobs, G. A. T. Duller, A. G. Wintle, C. S. Henshilwood, Extending the chronology of deposits at Blombos Cave, South Africa, back to 140ka using optical dating of single and multiple grains of quartz. *J. Hum. Evol.* **51**, 255–273 (2006).
119. M. L. Readhead, Absorbed dose fraction for  $^{87}\text{Rb}$  particles. *Ancient TL* **20**, 25–28 (2002).
120. G. W. Berger, A. Pérez-González, E. Carbonell, J. L. Arsuaga, J. M. Bermúdez de Castro, T. L. Ku, Luminescence chronology of cave sediments at the Atapuerca paleoanthropological site, Spain. *J. Hum. Evol.* **55**, 300–311 (2008).
121. E. Méndez-Quintas, M. Santonja, A. Pérez-González, M. Duval, M. Demuro, L. J. Arnold, First evidence of an extensive Acheulean large cutting tool accumulation in Europe from Porto Maior (Galicia, Spain). *Sci. Rep.* **8**, 3082 (2018).
122. M. Santamaría, M. Navazo, L. J. Arnold, A. Benito-Calvo, M. Demuro, E. Carbonell, Low-cost technologies in a rich ecological context: Hotel California open-air site at Sierra de Atapuerca, Burgos, Spain. *J. Quat. Sci.* **38**, 658–684 (2023).
123. J. Zilhão, D. E. Angelucci, L. J. Arnold, F. d’Errico, L. Dayet, M. Demuro, M. Deschamps, H. Fewlass, L. Gomes, B. Linscott, H. Matias, A. W. G. Pike, P. Steier, S. Talamo, E. M. Wild, Revisiting the Middle and Upper Palaeolithic archaeology of Gruta do Caldeirão (Tomar, Portugal). *PLOS ONE* **16**, e0259089 (2021).
124. J. Zilhão, D. E. Angelucci, L. J. Arnold, M. Demuro, D. L. Hoffmann, A. W. G. Pike, A revised, last interglacial chronology for the Middle Palaeolithic sequence of Gruta da Oliveira (Almonda karst system, Torres Novas, Portugal). *Quat. Sci. Rev.* **258**, 106885 (2021).
125. M. Duval, “Electron spin resonance (ESR) dating of fossil tooth enamel” in *Encyclopedia of Scientific Dating Methods* (2015), pp. 239–246.
126. D. García-Martínez, M. Duval, J. Zhao, Y. Feng, R. Wood, R. Huguet, G. Cifuentes-Alcobendas, C. A. Palancar, P. R. Moya-Maleno, Yacimiento de los Villares (Ruidera, Castilla-La Mancha, España): Un nuevo conjunto fósil del Pleistoceno Medio en la Submeseta Sur Ibérica con posible evidencia de actividad antrópica. *Cuaternario y Geomorfología* **36**, 7–35 (2022).
127. R. Grün, The DATA program for the calculation of ESR age estimates on tooth enamel. *Quat. Geochronol.* **4**, 231–232 (2009).
128. R. Grün, H. P. Schwarcz, J. Chadam, ESR dating of tooth enamel: Coupled correction for U-uptake and U-series disequilibrium. *Int. J. Rad. Appl. Instrum. D.* **14**, 237–241 (1988).
129. Q. Shao, J.-J. Bahain, J.-M. Dolo, C. Falguères, Monte Carlo approach to calculate US-ESR age and age uncertainty for tooth enamel. *Quat. Geochronol.* **22**, 99–106 (2014).
130. Q. Shao, J.-J. Bahain, C. Falguères, J.-M. Dolo, T. García, A new U-uptake model for combined ESR/U-series dating of tooth enamel. *Quat. Geochronol.* **10**, 406–411 (2012).
131. R. Grün, Methods of dose determination using ESR spectra of tooth enamel. *Radiat. Meas.* **32**, 767–772 (2000).
132. M. Duval, R. Grün, Are published ESR dose assessments on fossil tooth enamel reliable? *Quat. Geochronol.* **31**, 19–27 (2016).
133. R. Grün, S. Brumby, The assessment of errors in past radiation doses extrapolated from ESR/TL dose-response data. *Radiat. Meas.* **23**, 307–315 (1994).
134. T. R. Clark, J. X. Zhao, G. Roff, Y. X. Feng, T. J. Done, L. D. Nothdurft, J. M. Pandolfi, Discerning the timing and cause of historical mortality events in modern Porites from the Great Barrier Reef. *Geochim. Cosmochim. Acta* **138**, 57–80 (2014).
135. J.-x. Zhao, K. Hu, K. D. Collerson, H.-k. Xu, Thermal ionization mass spectrometry U-series dating of a hominid site near Nanjing China. *Geology* **29**, 27–30 (2001).
136. K. R. Ludwig, User’s manual for Isoplot 3.75: A geochronological toolkit for Microsoft Excel, *Berkeley Geochronology Center Special Publication 5* (Berkeley Geochronology Center, 2012), p. 75.
137. R. Grün, O. Katzenberger-Apel, An alpha irradiator for ESR dating. *Ancient TL* **12**, 35–38 (1994).
138. R. E. Marsh, “Beta-gradient isochrons using electron paramagnetic resonance: towards a new dating method in archaeology”, thesis, McMaster University (1999).
139. L. Martin, M. Duval, L. J. Arnold, To what extent do field conditions affect gamma dose rate determination using portable gamma spectrometry? *Radiat. Phys. Chem.* **216**, 111365 (2024).
140. R. Grün, An alternative model for open system U-series/ESR age calculations: (closed system U-series)-ESR, CSUS-ESR. *Ancient TL* **18**, 1–4 (2000).
141. M. Duval, L. Martín-Francés, Quantifying the impact of  $\mu\text{CT}$ -scanning of human fossil teeth on ESR age results. *Am. J. Phys. Anthropol.* **163**, 205–212 (2017).
142. C. Bronk Ramsey, Deposition models for chronological records. *Quat. Sci. Rev.* **27**, 42–60 (2008).
143. C. Bronk Ramsey, Dealing with outliers and offsets in radiocarbon dating. *Radiocarbon* **51**, 1023–1045 (2009).
144. M. L. Inizan, M. Reduron, H. Roche, J. Tixier, *Technologie de la Pierre Taillée. Préhistoire de la Pierre Taillée* (CREP Meudon, 1995).
145. J. Pelegrin, C. Karlin, P. Bodu, in *Technologie Préhistorique. Notes et Monographies Techniques No. 25* (CNRS, 1988), pp. 55–62.
146. M. Soressi, J.-M. Geneste, The history and efficacy of the chaîne opératoire approach to lithic analysis: Studying techniques to reveal past societies in an evolutionary perspective. *Paleoanthropology* **2011**, 334–350 (2011).
147. W. Andrefsky, The analysis of stone tool procurement, production, and maintenance. *J. Archaeol. Res.* **17**, 65–103 (2009).
148. M. C. Nelson, The study of technological organization. *Archaeol. Method Theory* **3**, 57–100 (1991).
149. E. Robinson, F. Sellet, Eds., *Lithic Technological Organization and Paleoenvironmental Change. Global and Diachronic Perspectives* (Springer, 2018).
150. R. L. Kelly, The three sides of a biface. *Am. Antiq.* **53**, 717–734 (1988).
151. J. Pelegrin, C. Chauchat, Tecnología y función de las puntas de Pajjan: El aporte de la experimentación. *Latin Am. Antiq.* **4**, 367–382 (1993).
152. E. Callahan, *The Basics of Biface Knapping in the Eastern Fluted Point Tradition: A Manual for Flintknappers and Lithic Analysts*. (Pitdown Productions, 2000).
153. T. Aubry, B. Bradley, M. Almeida, B. Walter, M. J. Neves, J. Pelegrin, M. Lenoir, M. Tiffagom, Solutrean laurel leaf production at Maitreaux: An experimental approach guided by techno-economic analysis. *World Archaeol.* **40**, 48–66 (2008).
154. D. Sonneville-Bordes, *Le Paléolithique Supérieur en Périgord* (Imprimeries Delmas, 1960).
155. H. Delporte, La séquence aurignacienne et périgordienne sur la base des travaux récents réalisés en Périgord. *Bulletin de la Société Préhistorique Française* **88**, 243–256 (1991).
156. A. Arrizabalaga, Los tecnocomplejos líticos del yacimiento arqueológico de Labeko Koba (Arrasate, País Vasco)—The lithic technocomplexes in the archaeological site of Labeko Koba (Arrasate Basque Country). *Munibe Antropologia-Arkeologia* **52**, 193–343 (2000).
157. F. Bon, *L’Aurignacien Entre mer et océan: Réflexion sur l’unité des Phases Anciennes de l’Aurignacien dans le Sud de la France* (Société Préhistorique Française, 2002), vol. 29.
158. A. Falucci, M. Peresani, Protoaurignacian core reduction procedures: Blade and bladelet technologies at Fumane Cave. *Lithic Technol.* **43**, 125–140 (2018).
159. D. Sonneville-Bordes, J. Perrot, Lexique typologique du Paléolithique Supérieur: Outillage lithique: I Grattoirs - II Outils solutréens. *Bulletin de la Société Préhistorique Française* **51**, 327–335 (1954).
160. D. Sonneville-Bordes, J. Perrot, Lexique typologique du Paléolithique Supérieur: Outillage lithique - III outils composites, perçoirs. *Bulletin de la Société Préhistorique Française* **52**, 79–79 (1955).
161. D. Sonneville-Bordes, J. Perrot, Lexique typologique du Paléolithique Supérieur: Outillage lithique - IV Burins. *Bulletin de la Société Préhistorique Française* **53**, 408–412 (1956).
162. D. Sonneville-Bordes, J. Perrot, Lexique typologique du Paléolithique Supérieur: Outillage lithique: V Outillage à bord abattu - VI Pièces tronquées - VII Lames retouchées - VIII Pièces variées - IX Outillage lamellaire. Pointe azilienne. *Bulletin de la Société Préhistorique Française* **53**, 547–559 (1956).
163. P. M. Desrosiers, *The Emergence of Pressure Blade Making: From Origin to Modern Experimentation*. (Springer-Verlag, 2012).
164. A. Cheynier, Impromptu sur la séquence des pointes du Paléolithique supérieur. *Bulletin de la Société Préhistorique Française* **55**, 190–205 (1958).
165. C. Leroy-Prost, L’industrie osseuse aurignacienne. Essai régional de classification: Poitou, Charentes, Périgord. *Gallia Préhistoire* **18**, 65–156 (1975).
166. J.-M. Pétilion, *Des Magdaléniens en Armes. Technologie des Armatures de Projectile en Bois de Cervidid de la Magdalénien Supérieur de la Grotte d’Isturitz (Pyrénées-Atlantiques)*. (Cedarc, 2006).
167. F. Bernaldo de Quirós, *Los Inicios del Paleolítico Superior Cantábrico* (Ministerio de cultura. Dirección General de Bellas Artes y Archivos, 1982), vol. *Monografías del Centro de Investigaciones y Museo de Altamira* 8.
168. D. Garrido Pimentel, “Clasificación tipológica y cadena operativa del instrumental óseo de la región cantábrica desde el Auriniense hasta el Magdaleniense inicial. El modelo de Aitzbitarte IV y Bolinkoba”, thesis, Universidad de Salamanca (2015).
169. I. Barandiarán, A. Cava, Identificaciones del Gravetiense en las estribaciones occidentales del Pirineo: Modelos de ocupación y uso. *Trabajos De Prehistoria* **65**, 13–28 (2008).

170. M. Domínguez-Rodrigo, R. B. Egido, C. P. Egeland, *Deconstructing Olduvai: A Taphonomic Study of the Bed I Sites*. E. Delson, R. D. E. MacPhee, Eds., Vertebrate Paleobiology and Paleoanthropology Series (Springer, 2007).
171. L. R. Binford, in *Bones: Ancient Men and Modern Myths*. (Academic Press, 1981), p. 320.
172. C. K. Brain, in *The Hunters or the Hunted? An Introduction to African Cave Taphonomy* (Univ. of Chicago Press, 1981), p. 365.
173. G. Haynes, A guide for differentiating mammalian carnivore taxa responsible for gnaw damage to herbivore limb bones. *Paleobiology* **9**, 164–172 (1983).
174. A. J. Sutcliffe, Spotted hyaena: Crusher, gnawer, digester and collector of bones. *Nature* **227**, 1110–1113 (1970).
175. R. Potts, P. Shipman, Cutmarks made by stone tools on bones from Olduvai Gorge, Tanzania. *Nature* **291**, 577–580 (1981).
176. P. Shipman, J. Rose, Early hominid hunting, butchering, and carcass-processing behaviors: Approaches to the fossil record. *J. Anthropol. Archaeol.* **2**, 57–98 (1983).
177. M. Domínguez-Rodrigo, S. d. Juana, A. B. Galán, M. Rodríguez, A new protocol to differentiate trampling marks from butchery cut marks. *J. Archaeol. Sci.* **36**, 2643–2654 (2009).
178. R. J. Blumenschine, M. M. Selvaggio, Percussion marks on bone surfaces as a new diagnostic of hominid behaviour. *Nature* **333**, 763–765 (1988).
179. M. C. Stiner, S. Weiner, O. Bar-Yosef, S. L. Kuhn, Differential burning, recrystallization, and fragmentation of archaeological bone. *J. Archaeol. Sci.* **22**, 223–237 (1995).
180. E. Téllez, P. Saladié, A. Pineda, J. Marin, J. Vallverdú, M. G. Chacón, E. Carbonell, Incidental burning on bones by Neanderthals: The role of fire in the Qa level of Abric Romaní rock-shelter (Spain). *Archaeol. Anthropol. Sci.* **14**, 119 (2022).
181. L. Lloveras, M. Moreno-García, J. Nadal, J. Maroto, J. Soler, N. Soler, The application of actualistic studies to assess the taphonomic origin of Mustelian rabbit accumulations from Arbreda Cave (North-East Iberia). *Archaeofauna* **19**, 99–119 (2010).
182. L. Lloveras, J. Maroto, J. Soler, R. Thomas, M. Moreno-García, J. Nadal, N. Soler, The role of small prey in human subsistence strategies from Early Upper Palaeolithic sites in Iberia: The rabbits from the Evolved Aurignacian level of Arbreda Cave. *J. Quat. Sci.* **31**, 458–471 (2016).
183. A. Rodríguez-Hidalgo, M. Sanz, J. Daura, A. Sánchez-Marco, Taphonomic criteria for identifying Iberian lynx dens in quaternary deposits. *Sci. Rep.* **10**, 7225 (2020).
184. A. B. Marin-Arroyo, M. D. L. Ruiz, G. V. Bernabeu, R. S. Roman, M. R. G. Morales, L. G. Straus, Archaeological implications of human-derived manganese coatings: A study of blackened bones in El Mirón Cave, Cantabrian Spain. *J. Archaeol. Sci.* **35**, 801–813 (2008).
185. A. K. Behrensmeier, Taphonomic and ecologic information from bone weathering. *Paleobiology* **4**, 150–162 (1978).
186. Y. Fernandez-Jalvo, P. Andrews, *Atlas of Taphonomic Identifications: 1001+ Images of Fossil and Recent Mammal Bone Modification*. E. Delson, E. Sargis, Eds., (Springer, 2016).
187. P. Saladié, R. Huguet, C. Diez, A. Rodríguez-Hidalgo, I. Cáceres, J. Vallverdú, J. Rosell, J. M. Bermúdez de Castro, E. Carbonell, Carcass transport decisions in *Homo antecessor* subsistence strategies. *J. Hum. Evol.* **61**, 425–446 (2011).
188. M. C. Stiner, The use of mortality patterns in archaeological studies of hominid predatory adaptations. *J. Anthropol. Archaeol.* **9**, 305–351 (1990).
189. S. D. Capaldo, Experimental determinations of carcass processing by Plio-Pleistocene hominids and carnivores at FLK 22 (Zinjanthropus), Olduvai Gorge, Tanzania. *J. Hum. Evol.* **33**, 555–597 (1997).
190. S. D. Capaldo, Methods, marks, and models for inferring hominid and carnivore behavior. *J. Hum. Evol.* **35**, 317–320 (1998).
191. M. P. Alfaro-Ibáñez, G. Cuenca-Bescós, P. Bover, M. González Morales, L. G. Straus, Implications of population changes among the Arvicolinae (Rodentia, Mammalia) in El Mirón Cave (Cantabria, Spain) for the climate of the last c. 50,000 years. *Quat. Sci. Rev.* **315**, 108234 (2023).
192. S. Bañuls-Cardona, P. Martín Rodríguez, J. M. López-García, J. I. Morales, G. Cuenca-Bescós, J. M. Vergès, Human impact on small-mammal diversity during the middle- to late-Holocene in Iberia: The case of El Mirador cave (Sierra de Atapuerca, Burgos, Spain). *Holocene* **27**, 1067–1077 (2017).
193. G. Cuenca-Bescós, A. Morcillo-Amo. (Ed. Prames, Zaragoza, 2022).
194. J. Galán, S. Bañuls-Cardona, G. Cuenca-Bescós, J. M. Vergès, Understanding the biogeography of Western European bats: The latest Pleistocene to Middle Holocene assemblage of El Mirador site (Sierra de Atapuerca, Spain). *Hist. Biol.* **35**, 1686–1700 (2023).
195. A. Martínez-Monzón, G. Cuenca-Bescós, J.-F. Bisbal-Chinesta, H.-A. Blain, One million years of diversity shifts in amphibians and reptiles in a Mediterranean landscape: Resilience rules the Quaternary. *Palaeontology* **64**, 673–686 (2021).
196. C. Núñez-Lahuerta, J. Galán, V. Sauqué, G. Cuenca-Bescós, The role of birds in Late Pleistocene Eurosiberian-Mediterranean boundary reconstructions in Western Europe. *Quat. Int.* **481**, 113–122 (2018).
197. A. Blanco-Lapaz, A. Martínez-Monzón, H.-A. Blain, G. Cuenca-Bescós, Early-Middle Pleistocene freshwater ecosystems in the Sierra de Atapuerca (northern Iberia) based on the Gran Dolina fish record. *Palaeogeogr. Palaeoclimatol. Palaeoecol.* **574**, 110444 (2021).
198. L. Lebreton, E. Desclaux, C. Hanquet, G. Cuenca-Besco, A.-M. Moigne, C. Perrenoud, S. Grégoire, Variations paléoenvironnementales au sein de l'Unité Archéostratigraphique G (UA G) de la Caune de l'Arago (Tautavel, France): Apport des paléocommunautés de rongeurs. *Quaternaire. Revue de l'Association Française Pour l'étude du Quaternaire* **28**, 313–321 (2017).
199. P. Andrews, *Owls, caves and fossils: Predation, Preservation and Accumulation of Small Mammal Bones in Caves, with an Analysis of the Pleistocene Cave Faunas from Westbury-sub-Mendip, Somerset, UK*. (Univ. of Chicago Press, 1990).
200. Ø. Hammer, D. A. T. Harper, P. D. Ryan, PAST: Paleontological statistics software package for education and data analysis. *Palaeontol. Electron.* **4**, 9 (2001).
201. A. Lemanik, A. Nadachowski, P. Socha, Biostratigraphic significance of the root vole (*Alexandromys oeconomicus*) for dating late Middle and early Late Pleistocene (MIS 8–MIS 3) Neanderthal sites in southern Poland. *Archaeol. Anthropol. Sci.* **14**, 112 (2022).
202. G. W. Dimbleby, *The Palynology of Archaeological Sites* (Academic Press, 1985).
203. G. Erdtman, *Handbook of Palynology* (Hafner, 1969).
204. M. Girard, J. Renault-Miskovsky, A. — Nouvelles techniques de préparation en palynologie. *Quaternaire* **6**, 275–278 (1969).
205. J. S. Carrión, A palaeoecological study in the western Mediterranean area. The upper Pleistocene pollen record from Cova Beneito (Alicante, Spain). *Palaeogeogr. Palaeoclimatol. Palaeoecol.* **92**, 1–14 (1992).
206. J. S. Carrión, L. Scott, P. deMenocal, Paleofloras, paleovegetation and human evolution. *Rev. Palaeobot. Palynol.* **267**, 32–38 (2019).
207. J. S. Carrión, C. Lalueza-Fox, J. Stewart, Neanderthals: Ecology and evolution. *Quat. Sci. Rev.* **217**, 1–6 (2019).
208. J. S. Carrión, J. Ochando, K. Sniderman, D. Festi, Palaeobotanical records from cave environments. *Rev. Palaeobot. Palynol.* **306**, 104759 (2022).
209. J. S. Carrión, P. González-Sampériz, J. A. López Sáez, P. López García, M. Dupré, Quaternary pollen analysis in the Iberian Peninsula: The value of negative results. *Int. Archaeol.* **25**, 1–54 (2009).
210. C. R. Cartwright, The principles, procedures and pitfalls in identifying archaeological and historical wood samples. *Ann. Bot.* **116**, 1–13 (2015).
211. F. H. Schweingruber, *Anatomy of European woods* (Paul Haupt, 1990).
212. J. G. Hather, *The Identification of Northern European Woods: A Guide for Archaeologists and Conservators*. (Routledge, 2016).
213. M. Génova, F. Gómez-Manzanque, F. Martínez-García, J. M. Postigo-Mijarra, Early Holocene vegetation in the Ayllón Massif (Central System Range, Spain) based on macroremains. A paleoecological approach. *Palaeogeogr. Palaeoclimatol. Palaeoecol.* **441**, 811–822 (2016).
214. M. Buckley, M. Collins, J. Thomas-Oates, J. C. Wilson, Species identification by analysis of bone collagen using matrix-assisted laser desorption/ionisation time-of-flight mass spectrometry. *Rapid Commun. Mass Spectrom.* **23**, 3843–3854 (2009).
215. F. Welker, M. Soressi, W. Rendu, J.-J. Hublin, M. Collins, Using ZooMS to identify fragmentary bone from the Late Middle/Early Upper Palaeolithic sequence of Les Cottés, France. *J. Archaeol. Sci.* **54**, 279–286 (2015).
216. S. Gibb, K. Strimmer, MALDIquant: A versatile R package for the analysis of mass spectrometry data. *Bioinformatics* **28**, 2270–2271 (2012).
217. K. Ruebens, G. M. Smith, H. Fewlass, V. Sinet-Mathiot, J. J. Hublin, F. Welker, Neanderthal subsistence, taphonomy and chronology at Salzgitter-Lebenstedt (Germany): A multifaceted analysis of morphologically unidentifiable bone. *J. Quat. Sci.* **38**, 471–487 (2023).
218. M. Buckley, M. Hassman, B. Košata, M. Kudiček, mMass data miner: An open source alternative for mass spectrometric data analysis. *Rapid Commun. Mass Spectrom.* **22**, 905–908 (2008).
219. T. Z. T. Jensen, A. Sjöström, A. Fischer, E. Rosengren, L. T. Lanigan, O. Bennike, K. K. Richter, K. J. Gron, M. Mackie, M. F. Mortensen, L. Sørensen, D. Chivall, K. H. Iversen, A. J. Turozzi, J. Olsen, H. Schroeder, N. Milner, M. Sørensen, M. J. Collins, An integrated analysis of Maglemose bone points reframes the Early Mesolithic of Southern Scandinavia. *Sci. Rep.* **10**, 17244 (2020).
220. F. Welker, M. Hajdinjak, S. Talamo, K. Jaouen, M. Dannemann, F. David, M. Julien, M. Meyer, J. Kelso, I. Barnes, S. Brace, P. Kamminga, R. Fischer, B. M. Kessler, J. R. Stewart, S. Pääbo, M. J. Collins, J. J. Hublin, Palaeoproteomic evidence identifies archaic hominins associated with the Châtelperronian at the Grotte du Renne. *Proc. Natl. Acad. Sci. U.S.A.* **113**, 11162–11167 (2016).
221. O. Nehlich, M. P. Richards, Establishing collagen quality criteria for sulphur isotope analysis of archaeological bone collagen. *Archaeol. Anthropol. Sci.* **1**, 59–75 (2009).
222. O. Nehlich, The application of sulphur isotope analyses in archaeological research: A review. *Earth Sci. Rev.* **142**, 1–17 (2015).
223. F. Tátá, J. Cascalheira, J. Marreiros, T. Pereira, N. Bicho, Shell bead production in the Upper Paleolithic of Vale Boi (SW Portugal): An experimental perspective. *J. Archaeol. Sci.* **42**, 29–41 (2014).
224. N. F. Bicho, J. F. Gibaja, M. Stiner, T. Manne, Le paléolithique supérieur au sud du Portugal: Le site de Vale Boi. *Anthropologie* **114**, 48–67 (2010).



225. N. Bicho, J. Marreiros, J.ascalheira, T. Pereira, J. Haws, Bayesian modeling and the chronology of the Portuguese Gravettian. *Quat. Int.* **359–360**, 499–509 (2015).
226. N. F. Bicho, J. Haws, J. Marreiros, in *Pensando el Gravetiense: Nuevos Datos para la Región Cantábrica en su Contexto Peninsular y Pirenaico*, vol. 23, *Monografías del Museo Nacional y Centro de Investigación de Altamira*, C. de las Heras Martín, J. A. Lasheras Corruachaga, A. Arrizabalaga Valbuena, M. De la Rasilla Vives, Eds. (Ministerio de Educación, Cultura y Deporte, 2012), pp. 55–72.
227. J. Zilhão, S. J. M. Davis, C. Duarte, A. M. M. Soares, P. Steier, E. Wild, Pego do Diabo (Loures, Portugal): Dating the emergence of anatomical modernity in Westernmost Eurasia. *PLOS ONE* **5**, e8880 (2010).
228. T. Aubry, L. A. Dimuccio, M. Almeida, M. J. Neves, D. E. Angelucci, L. Cunha, Palaeoenvironmental forcing during the Middle–Upper Palaeolithic transition in central-western Portugal. *Quat. Res.* **75**, 66–79 (2011).
229. P. Ramil Rego, C. Fernández Rodríguez, Recopilación de las dataciones absolutas obtenidas en depósitos cuaternarios de Galicia. *Férvedes: Revista de investigación* **2**, 133–141 (1995).
230. P. J. Morales Grajera, Yacimientos chatelperronienses en el norte de España. *Espacio, Tiempo y Forma. Serie I. Prehistoria y Arqueología* **11**, 65–82 (1998).
231. A. de Lombera-Hermida, X.-P. Rodríguez-Álvarez, A. A. Iglesias, M. Díaz Rodríguez, I. Rey-Rodríguez, I. Valverde Tejedor, A. Pérez-Alberti, P. P. Cunha, H. Bal García, X. Aldea Moreira, C. Lorenzo Salgueiro, T. Mosquera Castro, R. Fábregas-Valcarce, Between two worlds: Cova Eirós and the Middle-Upper Palaeolithic transition in NW Iberia. *C. R. Palevol.* **20**, 859–886 (2021).
232. X. P. Rodríguez-Álvarez, A. de Lombera-Hermida, R. Fábregas Valcarce, T. Lazuén-Fernández, in *To the West of Spanish Cantabria: The Palaeolithic Settlement of Galicia*, A. De Lombera-Hermida, R. Fábregas Valcarce, Eds., *International Series (British Archaeological Reports, 2011)*, pp. 123–132.
233. J. Fortea, in *Excavaciones Arqueológicas en Asturias, 1995–1998*. (Consejería de Cultura, 1999), pp. 31–41.
234. M. Menéndez, D. Álvarez-Alonso, M. de Andrés-Herrero, P. Carral, E. García-Sánchez, J. F. Jordá Pardo, J. M. Quesada, J. Rojo, The Middle to Upper Paleolithic transition in La Güelga cave (Asturias, Northern Spain). *Quat. Int.* **474**, 71–84 (2018).
235. M. Menéndez, E. García, J. M. Quesada, La transición Paleolítico Medio-Paleolítico superior en la Cueva de la Güelga (Cangas de Onís, Asturias): Un avance a su registro. *Neandertales Cantábricos. Estado de la Cuestión. Monografías del Centro de Investigación Museo de Altamira* **20**, 589–617 (2005).
236. A. C. Pinto-Llona, A. Grandal-d'Anglade, Conflicting 14C scenarios in the Sopena cave (northern Iberia): Dating the Middle–Upper Palaeolithic boundary by non-ultrafiltered versus ultrafiltered AMS 14C. *Quat. Int.* **522**, 1–11 (2019).
237. A. C. Pinto-Llona, A. Grandal-d'Anglade, Sorting the riddle of the Neanderthal to anatomically modern human boundary in Sopena (Asturias, Spain): New dates and a preliminary Bayesian analysis. *J. Archaeol. Sci. Rep.* **45**, 103607 (2022).
238. A. C. Pinto-Llona, in *Pleistocene and Holocene Hunter-Gatherers in Iberia and the Gibraltar Strait: The Current Archaeological Record*, R. Sala, Ed. (Fundación Atapuerca, 2014), pp. 123–126.
239. M. De la Rasilla, D. Santamaría, El Paleolítico Medio en Asturias. *Mainake* **33**, 31–62 (2011).
240. R. Wood, F. Bernaldo de Quirós, J. M. Maíllo-Fernández, J. M. Tejero, A. Neira, T. Higham, El Castillo (Cantabria, northern Iberia) and the Transitional Aurignacian: Using radiocarbon dating to assess site taphonomy. *Quat. Int.* **474**, 56–70 (2018).
241. F. Bernaldo de Quirós, P. Castaños, J. M. Maíllo-Fernández, A. Neira, in *Pensando el Gravetiense. Nuevos Datos para La Región Cantábrica en su Contexto Peninsular y Pirenaico*, vol. 23, *Monografías del Museo Nacional y Centro de Investigación de Altamira*, C. de las Heras Martín, J. A. Lasheras Corruachaga, A. Arrizabalaga Valbuena, M. De la Rasilla Vives, Eds. (Ministerio de Educación, Cultura y Deporte, 2012), pp. 264–275.
242. J. M. Maíllo-Fernández, H. Valladas, V. Cabrera Valdés, F. Bernaldo de Quirós, Nuevas dataciones para el paleolítico superior de cueva Morín (Villanueva de Villaescusa, Cantabria). *Espacio, Tiempo y Forma. Serie I. Prehistoria y Arqueología* **14**, 145–150 (2001).
243. J. Maroto, M. Vaquero, A. Arrizabalaga, J. Baena, E. Baquedano, J. Jordá, R. Julià, R. Montes, J. van der Plicht, P. Rasines, R. Wood, Current issues in late Middle Palaeolithic chronology: New assessments from Northern Iberia. *Quat. Int.* **247**, 15–25 (2012).
244. J. Yravedra Sainz de los Terreros, in *Zoarchaeology and Modern Human Origin*, J. L. Clark, J. D. Speth, Eds. (Springer, 2013), pp. 77–95.
245. E. Muñoz Fernández, S. S. Santamaría, Análisis de la industria lítica de la cueva de Cobrante. *Sautuola* **15**, 145–189 (2009).
246. I. Schmidt, M. Bradtmöller, M. Kehl, A. Pastoors, Y. Tafelmaier, B. Weninger, G. C. Weniger, Rapid climate change and variability of settlement patterns in Iberia during the Late Pleistocene. *Quat. Int.* **274**, 179–204 (2012).
247. M. de la Rasilla, L. G. Straus, in *Las Sociedades del Paleolítico en la Región Cantábrica* (Diputación Foral de Bizkaia, 2004), pp. 209–242.
248. I. Gutiérrez-Zugasti, D. Cuenca-Solana, P. Rasines del Río, E. Muñoz, S. Santamaría, J. M. Morlote, The role of shellfish in hunter-gatherer societies during the Early Upper Palaeolithic: A view from El Cuco rockshelter, northern Spain. *J. Anthropol. Archaeol.* **32**, 242–256 (2013).
249. M. Aguirre Ruiz de Gopegui, in *Pensando el Gravetiense: Nuevos Datos para la Región Cantábrica en su Contexto Peninsular y Pirenaico*, vol. 23, *Monografías del Museo Nacional y Centro de Investigación de Altamira*, C. de las Heras Martín, J. A. Lasheras Corruachaga, A. Arrizabalaga Valbuena, M. De la Rasilla Vives, Eds. (Ministerio de Educación, Cultura y Deporte, 2012), pp. 216–228.
250. M. J. Iriarte-Chiapusso, Á. Arrizabalaga, in *Bolinkoba (Abadiño) y su Yacimiento Arqueológico: Arqueología de la Arqueología para la Puesta en Valor de su Depósito, a la luz de las Excavaciones Antiguas y Recientes*, M. J. Iriarte-Chiapusso, Á. Arrizabalaga, Eds. (KOBIE, 2015), vol. 6, pp. 5–88.
251. A. Sáenz de Buruaga, in *Arkeoikuska* (Gobierno Vasco, 2008), pp. 168–175.
252. K. Mariezkurrena, Dataciones de radiocarbono existentes para la prehistoria vasca. *Munibe* **31**, 237–255 (1979).
253. J. Altuna, A. Baldeón, K. Mariezkurrena, *La Cueva de Amalda (Zestoa, País Vasco). Ocupaciones Paleolíticas y Postpaleolíticas*. (Sociedad de Estudios Vascos, 1990).
254. I. Barandiarán, P. Benítez, A. Cava, M. A. Millán, El taller gravetiense de Mugardua sur (Navarra): Identificación y cronología. *Zephyrus* **60**, 15–26 (2007).
255. J. Altuna, K. Mariezkurrena, J. Ríos, *Ocupaciones Humanas en Aitzbitarte III (País Vasco) 33.600-18.400 BP (Zona Entrada a la Cueva)* (Colección de Patrimonio Cultural Vasco, Servicio Central de Publicaciones del Gobierno Vasco, 2011).
256. I. Barandiarán, A. Cava, El Paleolítico superior de la cueva de Zatoya (Navarra): Actualización de los datos en 1997. *Trabajos de Arqueología Navarra* **15**, 5–99 (2001).
257. C. C. Barshay-Szmidt, L. Eizenberg, M. Deschamps, Radiocarbon (AMS) dating the Classic Aurignacian, Proto-Aurignacian and Vasconian Mousterian at Gatzarria Cave (Pyrénées-Atlantiques, France). *Paleo* **23**, 11–38 (2012).
258. J. M. Carretero, L. Juez, A. Pérez-González, J. L. Arsuaga, R. Pérez-Martínez, M. Cruz Ortega, A Late Pleistocene-Early Holocene archaeological sequence of Portalón de Cueva Mayor (Sierra de Atapuerca, Burgos, Spain). *Munibe* **59**, 67–80 (2008).
259. R. Mora, A. Benito-Calvo, J. Martínez-Moreno, P. G. Marcen, I. De La Torre, Chronostratigraphy of the Upper Pleistocene and Holocene archaeological sequence in Cova Gran (south-eastern Pre-Pyrenees, Iberian Peninsula). *J. Quat. Sci.* **26**, 635–644 (2011).
260. R. Mora, J. Martínez-Moreno, M. R. Sunyer, A. B. Calvo, A. Polo-Díaz, S. S. Carro, Contextual, technological and chronometric data from Cova Gran: Their contribution to discussion of the Middle-to-Upper Paleolithic transition in northeastern Iberia. *Quat. Int.* **474**, 30–43 (2018).
261. R. E. M. Hedges, R. A. Housley, C. Bronk Ramsey, G. J. Van Klinken, Radiocarbon dates from the Oxford AMS system: Archaeometry datelist 18. *Archaeometry* **36**, 337–374 (1994).
262. J. Maroto, N. Soler, A. Mir, La cueva de Mollet I (Seriný, Gerona). *Cypselá* **6**, 101–110 (1987).
263. J. Maroto, N. Soler, J. M. Fullola, in *The Last Neanderthals, the First Anatomically Modern Humans: A Tale About the Human Diversity*, E. Carbonell, M. Vaquero, Eds. (Univ. Rovira i Virgili, 1996), pp. 219–250.
264. J. L. Bischoff, K. Ludwig, J. F. García, E. Carbonell, M. Vaquero, T. W. Stafford Jr., A. J. T. Jull, Dating of the basal Aurignacian sandwich at Abric Romani (Catalunya, Spain) by radiocarbon and Uranium-Series. *J. Archaeol. Sci.* **21**, 541–551 (1994).
265. M. Camps, T. Higham, Chronology of the Middle to Upper Palaeolithic transition at Abric Romani, Catalunya. *J. Hum. Evol.* **62**, 89–103 (2012).
266. J. Daura, M. Sanz, N. García, E. Allué, M. Vaquero, E. Fierro, J. S. Carrión, J. M. López-García, H. A. Blain, A. Sánchez-Marco, C. Valls, R. M. Albert, J. J. Fornós, R. Julià, J. M. Fullola, J. Zilhão, Terrasses de la Riera dels Canyars (Gavà, Barcelona): The landscape of Heinrich Stadial 4 north of the “Ebro frontier” and implications for modern human dispersal into Iberia. *Quat. Sci. Rev.* **60**, 26–48 (2013).
267. J. I. Morales, A. Cebrià, A. Burguet-Coca, J. L. Fernández-Marchena, G. García-Argudo, A. Rodríguez-Hidalgo, M. Soto, S. Talamo, J. M. Tejero, J. Vallverdú, J. M. Fullola, The Middle-to-Upper Paleolithic transition occupations from Cova Foradada (Calafell, NE Iberia). *PLOS ONE* **14**, e0215832 (2019).
268. P. Utrilla, L. Montes, C. Mazo, A. Alday, J. M. Rodanés, M. F. Blasco, R. Domingo, M. Bea, in *El Paleolítico Superior Peninsular. Novedades del Siglo XXI. Homenaje al Profesor Javier Fortea*, vol. 8, *Monografies Seminari d'Estudis i Recerques Prehistòriques* (Univ. de Barcelona, 2010), pp. 23–62.
269. F. J. Fortea Pérez, F. Jordá Cerdá, La Cueva de Les Mallaetes y los problemas del Paleolítico Superior del Mediterráneo español. *Zephyrus* **26–28**, 129–166 (1975).
270. G. Iturbe, M. P. Fumanal García, J. S. Carrión, E. Cortell Pérez, R. Martínez Valle, P. M. Guillem Calatayud, M. D. Garralda, B. Vandermeersch, Cova Beneito (Muro, Alicante): Una perspectiva interdisciplinar. *Recerques del Museu d'Alcoi* **2**, 23–88 (1993).
271. J. A. Casabó i Bernad, La esfera de Cova Foradada (Xàbia, Marina Alta), un objeto singular de los inicios del paleolítico superior. *Quaderns de Prehistoria y Arqueología de Castellón* **32**, 5–12 (2014).
272. V. Villaverde, D. Román, Avance al estudio de los niveles gravetienses de la Cova de les Cendres. Resultados de la excavación del sondeo (cuadros A/B/C-17) y su valoración en

- el contexto del Gravetiense mediterráneo ibérico. *Archivo de Prehistoria Levantina* **25**, 19–60 (2004).
273. V. Villaverde, C. Real, D. Roman, R. M. Albert, E. Badal, M. Á. Bel, M. M. Bergadá, P. de Oliveira, A. Eixeia, I. Esteban, Á. Martínez-Alfaro, C. M. Martínez-Varea, M. Pérez-Ripoll, The early Upper Palaeolithic of Cova de les Cendres (Alicante, Spain). *Quat. Int.* **515**, 92–124 (2019).
274. J. Zilhão, D. Anesin, T. Aubry, E. Badal, D. Cabanes, M. Kehl, N. Klasen, A. Lucena, I. Martín-Lerma, S. Martínez, H. Matias, D. Susini, P. Steier, E. M. Wild, D. E. Angelucci, V. Villaverde, J. Zapata, Precise dating of the Middle-to-Upper Paleolithic transition in Murcia (Spain) supports late Neandertal persistence in Iberia. *Heliyon* **3**, e00435 (2017).
275. V. Villaverde, D. Román, in *Pensando el Gravetiense: Nuevos Datos para la Región Cantábrica en su Contexto Peninsular y Pirenaico*, vol. 23, *Monografías del Museo Nacional y Centro de Investigación de Altamira*, C. de las Heras Martín, J. A. Lasheras Corruachaga, A. Arrizabalaga Valbuena, M. De la Rasilla Vives, Eds. (Ministerio de Educación, Cultura y Deporte, 2012), pp. 34–54.
276. P. de la Peña, The beginning of the Upper Paleolithic in the Baetic Mountain area (Spain). *Quat. Int.* **318**, 69–89 (2013).
277. I. Martín-Lerma, D. Román, J. Armellini, N. Sánchez-Martínez, D. E. Angelucci, First data from the prehistoric site complex of Cueva del Arco (Murcia, Spain). *J. Paleolit. Archaeol.* **6**, 19 (2023).
278. M. Cortés-Sánchez, J. F. Gibaja Bao, M. D. Simón Vallejo, in *Subsistence and Technology: One Hundred Fifty Years of Neanderthal Study*, N. J. Conard, J. Richter, Eds. (Springer, 2011), pp. 241–247.
279. P. B. Pettitt, R. M. Bailey, in *Neanderthals on the Edge*, C. B. Stringer, R. N. E. Barton, J. C. Finlayson, Eds. (Oxbow Books, 2000), pp. 155–162.
280. T. Manne, J. Cascalheira, M. Évora, J. Marreiros, N. Bicho, Intensive subsistence practices at Vale Boi, an Upper Paleolithic site in southwestern Portugal. *Quat. Int.* **264**, 83–99 (2012).
281. B. Forrest, W. J. Rink, N. Bicho, C. R. Ferring, OSL ages and possible bioturbation signals at the Upper Paleolithic site of Lagoa do Bordoal, Algarve, Portugal. *Quat. Sci. Rev.* **22**, 1279–1285 (2003).
282. J. L. Cardoso, M. V. Gomes, Zagaia do paleolítico superior de Portugal. *Portvgalia : Revista de Arqueologia do Departamento de Ciências e Técnicas do Património da FLUP* **15**, 9–31 (1994).
283. M. S. Corchón, J. L. Cardoso, Reflexiones sobre el Solutrense Portugués: A propósito de la industria Paleolítica Superior de Correio-Mor (Loures). *Zephyrus* **58**, 89–110 (2005).
284. L. Straus, L. Altuna, M. Jackes, M. Kunst, New excavations in Casa da Moura (Serra de El Rei, Peniche) and at Bocas (Rio Maior), Portugal. *Arqueologia* **18**, 65–95 (1988).
285. J. Zilhão, *O Paleolítico Superior da Estremadura Portuguesa*. (Edições Colibri, 1997).
286. G. d. J. d. O. Cardoso, "Cronologías Absolutas par Península Ibérica. Sitios Pré-Históricos do Alto Ribatejo, Portugal", thesis, Universidad de Tras-os-Montes e Alto Douro (2009).
287. T. Pereira, J. Cascalheira, J. Marreiros, F. Almeida, N. Bicho, Variation in quartzite exploitation during the Upper Palaeolithic of Southwest Iberian Peninsula. *Trab. Prehist.* **69**, 232–256 (2012).
288. P. Pettitt, H. Van der Plicht, C. Bronk Ramsey, A. M. Monge Soares, J. Zilhão, in *Portrait of the Artist as a Child: The Gravettian Human Skeleton from the Abrigo do Lagar Velho and Its Archeological Context*, J. Zilhão, E. Trinkaus, Eds. (Instituto Português de Arqueologia, 2002), pp. 132–138.
289. J. Cascalheira, in *Arqueologia em Portugal—150 anos (Atas do I Congresso da Associação dos Arqueólogos Portugueses)*. (Associação dos Arqueólogos Portugueses, 2013), pp. 269–275.
290. J. A. Haws, Paleolithic socionatural relationships during MIS 3 and 2 in central Portugal. *Quat. Int.* **264**, 61–77 (2012).
291. W. E. Banks, F. d'Errico, A. T. Peterson, M. Vanhaeren, M. Kageyama, P. Sepulchre, G. Ramstein, A. Jost, D. Lunt, Human ecological niches and ranges during the LGM in Europe derived from an application of eco-cultural niche modeling. *J. Archaeol. Sci.* **35**, 481–491 (2008).
292. T. Aubry, M. Fontugne, M.-H. Moura, Les occupations de la grotte de Burca Grande depuis le Paléolithique supérieur et les apports de la séquence holocène à l'étude de la transition mésolithique/néolithique au Portugal. *Bulletin de la Société Préhistorique Française* **94**, 182–190 (1997).
293. P. Rosina, in *Hidden Landscapes of Mediterranean Europe. Cultural and Methodological Biases in Pre- and Protohistoric Landscape Studies, Proceedings of the International Meeting, Siena, Italy, 25–27 May 2007*, F. Cavulli, Ed. (British Archaeological Reports, Archaeopress, 2011), pp. 221–227.
294. J.-P. Brugal, Petit gibier et fonction de sites au Paléolithique supérieur. Les ensembles fauniques de la grotte d'Anecrial (Porto de Mos, Estremadura, Portugal). *Paleo* **18**, 45–68 (2006).
295. A. Canals, A. Rodríguez-Hidalgo, L. Peña, E. Mancha, M. García-Díez, S. Bañuls, I. Euba, J. M. López-García, N. Barrero, I. Bermejo, F. J. García, D. Mehías, M. Modesto, A. Morcillo, V. Aranda, E. Carbonell, Nuevas aportaciones al Paleolítico superior del suroeste peninsular: la cueva de Maltravieso, más allá del santuario extremeño de las manos in El Paleolítico superior peninsular. Novedades del siglo XXI. Homenaje al profesor Javier Fortea. *Monografías del Seminari d'Estudis i Recerques Prehistòriques*, X. Mangado, F. J. Fortea, Eds. (2010), pp. 199–218.
296. H. Valladas, N. Mercier, L. Froget, J. L. Joron, J. Louis Reyss, T. Aubry, TL dating of Upper Palaeolithic sites in the Coa Valley (Portugal). *Quat. Sci. Rev.* **20**, 939–943 (2001).
297. T. Aubry, L. A. Dimuccio, M. M. Bergadá, J. D. Sampaio, F. Sellami, Palaeolithic engravings and sedimentary environments in the Cõa River Valley (Portugal): Implications for the detection, interpretation and dating of open-air rock art. *J. Archaeol. Sci.* **37**, 3306–3319 (2010).
298. R. Gaspar, J. Ferreira, J. Carrondo, M. J. Silva, F. J. García-Vadillo, Open-air Gravettian lithic assemblages from Northeast Portugal: The Foz do Medal site (Sabor valley). *Quat. Int.* **406**, 44–64 (2016).
299. M. S. Corchón Rodríguez, D. G. Maidagan, H. Valladas, O. R. Vila, E. Pons-Branchu, P. Ortega Martínez, C. H. Alvarez, De vuelta al punto de partida: Nuevas dataciones del arte de la cueva de La Peña de Candamo (Asturias). *Zephyrus* **73**, 67–81 (2014).
300. L. Torres-Iglesias, A. B. Marín-Arroyo, M. de la Rasilla, Estrategias de subsistencia durante el Solutrense cantábrico: El caso del Abrigo de La Viña (La Manzaneda, Asturias). *Trab. Prehist.* **79**, 11–29 (2022).
301. F. J. Fortea Pérez, in *Excavaciones Arqueológicas en Asturias: 1991–94* (Servicio de Publicaciones, 1995), pp. 19–32.
302. L. G. Straus, Excavaciones en la cueva de La Riera (1976-1979): Un estudio inicial. *Trab. Prehist.* **40**, 9–58 (1983).
303. J. R. Jones, A. B. Marín-Arroyo, L. G. Straus, M. P. Richards, Adaptability, resilience and environmental buffering in European Refugia during the Late Pleistocene: Insights from La Riera Cave (Asturias, Cantabria, Spain). *Sci. Rep.* **10**, 1217 (2020).
304. L. G. Straus, J. Altuna, G. A. Clark, M. G. Morales, H. Laville, M. M. de la Hoz, J. A. Ortea, P. G. Bahn, J. Clottes, I. Davidson, W. R. Farrand, J. M. Gómez-Tabanera, J. G. Echegaray, A. C. Goodyear, Paleoecology at La Riera (Asturias, Spain)[and comments and reply]. *Curr. Anthropol.* **22**, 655–682 (1981).
305. L. G. Straus, F. Bernaldo de Quiros, V. Cabrera, G. A. Clark, New radiocarbon dates for the Spanish Solutrean. *Antiquity* **51**, 243 (1977).
306. L. G. Straus, G. A. Clark, S. La Riera Cave: Stone Age hunter-gatherer adaptations in northern Spain. *Anthropol. Res. Pap.* **36**, 1–499 (1986).
307. C. Bronk Ramsey, T. F. G. Higham, F. Brock, D. Baker, P. Ditchfield, R. A. Staff, Radiocarbon dates from the Oxford AMS system: Archaeometry datelist 35. *Archaeometry* **57**, 177–216 (2015).
308. J. E. Aura, M. Tiffagom, J. F. Jordá Pardo, E. Duarte, J. Fernández de la Vega, D. Santamaria, M. de la Rasilla, M. Vadillo, M. Perez Ripoll, The Solutrean–Magdalenian transition: A view from Iberia. *Quat. Int.* **272–273**, 75–87 (2012).
309. D. Álvarez-Alonso, J. Yravedra, E. Álvarez-Fernández, A. Calvo, P. Carral, M. J. Iriarte Chiapusso, J. F. Jordá Pardo, C. Sesé, P. Uzquiano, Á. Arrizabalaga, Subsistencia, movilidad y adaptación al medio de los cazadores-recolectores gravetienses en el sector occidental de la región cantábrica: La cueva de Coimbre (Asturias). *Trab. Prehist.* **74**, 47–67 (2017).
310. D. Álvarez-Alonso, J. Yravedra, J. F. Jordá Pardo, A. Arrizabalaga, The Magdalenian sequence at Coimbre cave (Asturias, Northern Iberian Peninsula): Adaptive strategies of hunter–gatherer groups in montane environments. *Quat. Int.* **402**, 100–111 (2016).
311. F. I. Gutiérrez-Zugasti, D. Cuenca-Solana, M. R. González-Morales, A. García-Moreno, in *Pensando el Gravetiense: Nuevos Datos para la Región Cantábrica en su Contexto Peninsular y Pirenaico*, vol. 23, *Monografías del Museo y Centro de Investigación de Altamira*, C. de las Heras, J. A. Lasheras, A. Arrizabalaga, M. De la Rasilla, Eds. (Museo y Centro de Investigación de Altamira, 2012), pp. 416–428.
312. A. Blanco-Lapaz, A. B. Marín-Arroyo, I. Gutiérrez-Zugasti, F. González-Echegaray de Yarto, M. R. González-Morales, Coastal and Inland subsistence strategies during the Gravettian in the Cantabrian Region (northern Iberian Peninsula). *Quat. Sci. Adv.* **12**, 100106 (2023).
313. P. Rasines del Río, R. Montes Barquín, J. A. Lasheras Corruachaga, E. Muñoz Fernández, C. de las Heras Martín, P. Patás Monforte, in *Medio siglo de Arqueología en el Cantábrico Oriental y su Entorno: Actas del Congreso Internacional* (Instituto Alavés de Arqueología, 2009), pp. 709–728.
314. H. Valladas, H. Cachier, P. Maurice, F. B. de Quirost, J. Clottes, V. C. Valdés, P. Uzquiano, M. Arnold, Direct radiocarbon dates for prehistoric paintings at the Altamira, El Castillo and Niaux caves. *Nature* **357**, 68–70 (1992).
315. J. Rios-Garaizar, J. M. Maíllo-Fernández, A. B. Marín-Arroyo, M. Á. Sánchez Carro, S. Salazar, M. Á. Medina-Alcaide, A. San Emeterio, L. Martínez, de Pinillos, D. Garate, O. Rivero, Revisiting Hornos de la Peña 100 years after. *J. Archaeol. Sci. Rep.* **31**, 102259 (2020).
316. C. González Sainz, in *Palaeolithic Cave Art at Creswell Crags in European Context*, P. Pettitt, P. Bahn, S. Ripoll, F. Javier Muñoz Ibáñez, Eds. (Oxford Univ. Press, 2007), pp. 247–262.
317. F. Bernaldo de Quirós, P. Castaños, J. M. Maíllo Fernández, A. Neira, in *Forgotten Times and Spaces: New Perspectives in Paleoanthropological, Paleoetnological and Archeological Studies*, S. Sázcelová, M. Novák, A. Mizerová, Eds. (Institute of Archeology of the Czech Academy of Sciences, Masaryk Univ., 2015), pp. 410–417.

318. E. Álvarez-Fernández, La explotación de los moluscos marinos en la cornisa cantábrica durante el Gravetiense: Primeros datos de los niveles E y F de la Garma A (Omoño, Cantabria). *Zephyrus* **60**, 43–58 (2007).
319. P. Arias Cabal, R. Ontañón, A. Armendáriz, E. Pereda, in *III Congreso del Neolítico en la Península Ibérica (Santander, 5–8 de octubre de 2003). Libro Guía de la Excursión, Preactas*, P. Arias, R. Ontañón, C. García-Moncó, L. C. T. Mayolini, Eds. (Servicio de Publicaciones, Univ. de Cantabria, 2003), pp. 43–57.
320. M. Bradtmöller, The Gravettian occupation of level 4 Cueva Morín (Cantabrian Region) and its regional context. *Munibe* **66**, 023–052 (2015).
321. P. Uzquiano, Wood resource exploitation by Cantabrian Late Upper Palaeolithic groups (N Spain) regarding MIS 2 vegetation dynamics. *Quat. Int.* **337**, 154–162 (2014).
322. L. G. Straus, M. R. González Morales, L. M. Fontes, Conjuntos de artefactos del Magdaleniense inicial en la Cueva de El Mirón (Ramales de la Victoria, Cantabria, España): Un informe preliminar. *Zephyrus* **73**, 45–65 (2014).
323. L. G. Straus, M. R. G. Morales, E. B. Stewart, Early Magdalenian variability: New evidence from El Mirón Cave, Cantabria, Spain. *J. Field Archaeol.* **33**, 197–218 (2008).
324. L. G. Straus, M. R. González Morales, Further radiocarbon dates for the Upper Paleolithic of El Mirón cave (Ramales de la Victoria, Cantabria, Spain). *Radiocarbon* **49**, 1205–1214 (2007).
325. L. G. Straus, M. González Morales, El Mirón cave and the 14C chronology of Cantabrian Spain. *Radiocarbon* **45**, 41–58 (2003).
326. J. Ríos-Garaizar, D. G. Maidagan, A. Gomez Olivencia, D. A. Alonso, E. I. Aviles, A. García Moreno, D. G. Pimental, Z. San Pedro Calleja, El final del Solutrense en el oriente Cantábrico a través de las ocupaciones de la Cueva de Arlanpe (Lemoa, Vizcaya). *Zephyrus* **72**, 15–38 (2014).
327. J. Ríos-Garaizar, D. Garate Maidagan, Dataciones de radiocarbono en el yacimiento de Askondo (Mañaria, Bizkaia). *Kobie Serie Paleantropol.* **2**, 39–44 (2012).
328. M. Aguirre-Ruiz de Gopegui, Antoliñako Koba (Gautegiz, Arteaga). II Campaña de Excavaciones. *Ark. Dent.* **1998**, 99–102 (1998).
329. X. Esparza, J. A. Mujika, in *XXIV Congreso Nacional de Arqueología*. (Instituto de Patrimonio Histórico, 1999), vol. 1, pp. 61–69.
330. M. Almagro Gorbea, C-14, 1973. Nuevas fechas para la historia y la arqueología peninsular. *Trab. Prehist.* **30**, 311–318 (1973).
331. J. Altuna, J. M. Merino, *El Yacimiento Prehistórico de la Cueva de Ekain* (Eusko Ikaskuntza, 1984).
332. M. Dupré Ollivier, *Palinología y Paleoambiente: Nuevos Datos Españoles: Referencias* (Servicio de Investigación Prehistórica, Diputación Provincial de Valencia, 1988).
333. J. Altuna, Dataciones de radiocarbono para el Perigordense Superior del País Vasco. *Munibe* **43**, 31–32 (1992).
334. X. Peñalver-Iribarren, J. A. Múgica-Alustiza, Suelo de ocupación magdaleniense en la cueva de Praileaitz I (Deba, Gipuzkoa): Evidencias de arte mobiliario. *Veleia* **20**, 157–181 (2003).
335. F. d'Errico, M. Vanhaeren, A. Quffelec, Les galets perforés de Praileaitz I. *Munibe* **1**, 453–484 (2017).
336. J. Altuna, Fauna de mamíferos de los yacimientos prehistóricos de Guipuzcoa. *Munibe* **24**, 464 (1972).
337. C. Mazo, P. Utrilla, Excavaciones en la cueva de Abauntz (Arraiz). Campañas de 1994 y 1995. *Trabajos de Arqueología Navarra* **12**, 270–279 (1995).
338. M. Mosquera, A. Olle, A. Pérez-González, X. P. Rodríguez, M. Vaquero, J. M. Verges, E. Carbonell, Valle de las Orquideas: Un yacimiento al aire libre del Pleistoceno Superior en la Sierra de Atapuerca (Burgos). *Trab. Prehist.* **64**, 143–155 (2007).
339. M. Santamaría, M. Navazo, A. Benito-Calvo, A. Medialdea, E. Carbonell, Valdeprovedo open-air site: A knapping event in the early Upper Paleolithic of the Sierra de Atapuerca (Burgos, Spain). *Archaeol. Anthropol. Sci.* **16**, 24 (2024).
340. P. Utrilla, R. Domingo, L. Montes, C. Mazo, J. M. Rodanés, F. Blasco, A. Alday, The Ebro Basin in NE Spain: A crossroads during the Magdalenian. *Quat. Int.* **272–273**, 88–104 (2012).
341. L. Montes, P. Utrilla, Le Paléolithique Supérieur dans la moyenne vallée de l'Ebre. *L'Anthropologie* **112**, 168–181 (2008).
342. L. Montes, P. Utrilla, M. Martínez-Bea, Trabajos recientes en yacimientos musterienses de Aragón: Una revisión de la transición Paleolítico Medio/Superior en el Valle del Ebro. *Zona Arqueológica* **7**, 214–233 (2006).
343. A. Mir, R. Salas, La cueva de la Fuente del Trucho y su industria lítica arcaizante del Pleniglacial superior (Colungo, Huesca). *Bolskan* **17**, 9–32 (2000).
344. X. Mangado, O. Mercadal, J. M. Fullola, J. Grimao, in *Els Pirineus i les Àrees Circundants Durant el Tardiglacial. Mutacions i Filiacions. XIV Col·loqui Internacional d'Arqueologia de Puigcerdà. Homenatge al Prof. Georges Laplace*, J. M. Fullola, N. Valdeyron, Eds. (Institut d'Estudis Ceretans, 2009), pp. 549–564.
345. N. Soler, "Les indústries del Paleolític superior en el nord de Catalunya", thesis, Universitat de Barcelona (1986).
346. X. Mangado, F. J. F. Pérez, in *El Paleolítico Superior Peninsular. Novedades del Siglo XXI*, X. Mangado, Ed. (SERP, Univ. de Barcelona, 2010), pp. 63–83.
347. A. M. Muñoz Amilibia, La cronología de radiocarbono en la Península Ibérica. *Pyrenae* **3**, 7–15 (1967).
348. G. Delibrias, O. Romain, G. Le Hasif, Datation par la méthode du carbone 14 du remplissage de la grotte de l'Arbreda. *Cypselia* **6**, 133–135 (1987).
349. P. Utrilla, R. Domingo, Excavaciones en el Arenal de Fonseca (Landruñán, Teruel). *Saldvia* **2**, 337–354 (2001/2002).
350. J. Aragoncillo-del Río, J. J. Alcolea-González, L. Luque, S. Castillo-Jiménez, G. Jiménez-Gisbert, J. A. López-Sáez, J. M. Maíllo-Fernández, M. Ruiz-Alonso, I. Triguero, J. Yravedra, M. Alcaraz-Castaño, Human occupations of upland and cold environments in inland Spain during the Last Glacial Maximum and Heinrich Stadial 1: The new Magdalenian sequence of Charco Verde II. *PLOS ONE* **18**, e0291516 (2023).
351. M. Alcaraz-Castaño, J. Alcolea González, R. de Balbín Behrmann, M. Á. García Valero, J. Yravedra Sainz de los Terreros, J. Baena Preysler, Los orígenes del Solutrense y la ocupación pleniglacial del interior de la Península Ibérica: Implicaciones del nivel 3 de Peña Capón (valle del Sorbe, Guadalupe). *Trab. Prehist.* **70**, 28–53 (2013).
352. E. Bofinger, I. Davidson, Radiocarbon age and depth: A statistical treatment of two sequences of dates from Spain. *J. Archaeol. Sci.* **4**, 231–243 (1977).
353. C. Cacho Quesada, S. Ripoll López, Nuevas piezas de arte mueble ene el Mediterráneo español. *Trab. Prehist.* **44**, 35–62 (1987).
354. J. Zilhão, A. Ajas, E. Badal, C. Burrow, M. Kehl, J. A. López-Sáez, C. Pimenta, R. C. Preece, A. Sanchis, M. Sanz, G. C. Weniger, D. White, R. Wood, D. E. Angelucci, V. Villaverde, J. Zapata, Cueva Antón: A multi-proxy MIS 3 to MIS 5a paleoenvironmental record for SE Iberia. *Quat. Sci. Rev.* **146**, 251–273 (2016).
355. L. G. Straus, Southwestern Europe at the Last Glacial Maximum. *Curr. Anthropol.* **32**, 189–199 (1991).
356. D. Roman, V. Villaverde, Dos retocadores solutrenses de la Cova de les Cendres (Teulada-Moraira, La Marina Alta, País Valencià). *Archivo de Prehistoria Levantina* **30**, 17–25 (2014).
357. V. Villaverde-Bonilla, J. Menargues, E. Badal, P. M. Guillelm, R. M. Valle, R. García, El Paleolítico superior de la Cova de les Cendres (Teulada, Moraira). Datos proporcionados por el sondeo efectuado en los cuadros A/B 17. *Archivo de Prehistoria Levantina* **23**, 9–66 (1999).
358. J. E. Aura Tortosa, J. F. Jordá Pardo, Solutrense del Sur de Iberia en transición. *Espacio, Tiempo y Forma. Serie I. Prehistoria y Arqueología* **5**, 149–169 (2012).
359. E. Domenech, M. Bergadá, C. Roca de Togores, Nuevas aportaciones al Paleolítico superior medio de la Cova Beneito (Muro, Alacant). *Recerques del Museu d'Alcoi* **21**, 7–17 (2012).
360. B. Soler, E. Badal, V. Villaverde, J. E. Aura, Notas sobre un hogar Solutrense-gravetiense del Abric de la Ratlla del bubo (Creventill, Alacant). *Archivo de Prehistoria Levantina* **20**, 79–94 (1990).
361. J. Zilhão, D. E. Angelucci, E. Badal, A. M. Lucena, I. Martín-Lerma, S. Martínez, V. Villaverde, J. Zapata, in *El Paleolítico Superior Peninsular. Novedades del siglo XXI*, X. Mangado, F. J. Fortea, Eds. (Univ. de Barcelona, 2010), pp. 137–148.
362. A. Lucena, S. Martínez, D. E. Angelucci, E. Badal, V. Villaverde, J. Zapata y João Zilhão, La ocupación solutrense del abrigo de La Boja (Mula, Murcia, España). *Espacio, Tiempo y Forma. Serie I. Prehistoria y Arqueología* **1**, 447–454 (2012).
363. S. Ripoll, F. J. Muñoz, J. Latova, in *Congreso de Arte Esquemático en la Península Ibérica, Grupo de Desarrollo Rural "Los Vélez"* (2006), pp. 547–562.
364. J. F. Jordá Pardo, P. Carral López, S. Ripoll López, F. J. Muñoz Ibáñez, Geoarqueología, radiocarbono y cronoestratigrafía del yacimiento Solutrense de La Cueva de Ambrosio (Vélez-Blanco, Almería, España). *Espacio, Tiempo y Forma. Serie I. Prehistoria y Arqueología* **5**, 63–74 (2012).
365. S. Ripoll-López, F. J. Muñoz-Ibáñez, J. F. Jordá-Pardo, I. M. Martín-Lerma, Historia de las investigaciones recientes en La Cueva de Ambrosio (Vélez-Blanco, Almería, España). *Espacio Tiempo y Forma. Serie I Prehistoria y Arqueología* **5**, 47–61 (2013).
366. J. F. Jordá Pardo, E. Aura, 70 fechas para una cueva. Revisión crítica de 70 dataciones c14 del Pleistoceno superior y Holoceno de la cueva de Nerja (Málaga, Andalucía, España). *Espacio, Tiempo y Forma. Serie I. Prehistoria y Arqueología* **1**, 239–256 (2008).
367. J. F. Jordá Pardo, J. E. Aura, Radiocarbono, cronoestratigrafía y episodios ocupacionales en el Pleistoceno superior y Holoceno de la Cueva de Nerja (Málaga, Andalucía, España). *Zona Arqueológica* **7**, 578–597 (2006).
368. A. Arribas, G. Garrido, J. A. García Solano, in *2nd International Meeting Taphos* (Universitat de Barcelona, 2005), pp. 93–94.
369. J. L. Sanchidrián, M. Á. Medina, A. Romero, in *Pensando el Gravetiense: Nuevos Datos para la Región Cantábrica en su Contexto Peninsular y Pirenaico*, vol. 23, *Monografías del Museo y Centro de Investigación de Altamira* C. de Las Heras, J. A. Lasheras, A. Arrizabalaga, M. De la Rasilla, Eds. (Museo y Centro de Investigación de Altamira, 2012), pp. 501–511.
370. J. F. Jordá Pardo, J. E. Aura Tortosa, El Límite Pleistoceno-Holoceno en el yacimiento arqueológico de la Cueva de Nerja: Nuevas aportaciones cronoestratigráficas y paleoclimáticas. *Geogaceta* **46**, 95–98 (2009).
371. J. F. Jordá Pardo, J. E. Aura Tortosa, F. Jordá Cerdá, El límite Pleistoceno Holoceno en el yacimiento de la Cueva de Nerja (Málaga). *Geogaceta* **8**, 102–104 (1990).



372. M. Cortés-Sánchez, in *El Paleolítico superior peninsular. Novedades del siglo XXI. Homenaje al Profesor Javier Fortea*, vol. 8. *Monografies Seminari d'Estudis i Recerques Prehistòriques*. (Univ. de Barcelona, 2010), pp. 173–197.
373. J. L. Sanchidrián-Torti, A. M. Márquez Alcántara, Radiodataciones y sus repercusiones en el arte prehistórico malagueño. *Mainake* **25**, 275–292 (2003).
374. R. N. E. Barton, A. P. Currant, Y. Fernandez-Jalvo, J. C. Finlayson, P. Goldberg, R. MacPhail, P. B. Pettitt, C. B. Stringer, Gibraltar Neanderthals and results of recent excavations in Gorham's, Vanguard and Ibex Caves, Vanguard and Ibex Caves. *Antiquity* **73**, 13–23 (1999).
375. C. Finlayson, F. Giles Pacheco, J. Rodríguez-Vidal, D. A. Fa, J. María Gutierrez López, A. Santiago Pérez, G. Finlayson, E. Allue, J. Baena Preysler, I. Cáceres, J. S. Carrión, Y. Fernández Jalvo, C. P. Gleed-Owen, F. J. Jimenez Espejo, P. López, J. Antonio López Sáez, J. Antonio Riquelme Cantal, A. Sánchez Marco, F. Giles Guzman, K. Brown, N. Fuentes, C. A. Valarino, A. Villalpando, C. B. Stringer, F. Martinez Ruiz, T. Sakamoto, Late survival of Neanderthals at the southernmost extreme of Europe. *Nature* **443**, 850–853 (2006).
376. R. P. Jennings, F. Giles Pacheco, R. N. E. Barton, S. N. Collcutt, R. Gale, C. P. Gleed-Owen, J. M. Gutiérrez López, T. F. G. Higham, A. Parker, C. Price, New dates and palaeoenvironmental evidence for the Middle to Upper Palaeolithic occupation of Higuera de Valleja Cave, southern Spain. *Quat. Sci. Rev.* **28**, 830–839 (2009).

**Acknowledgments:** We are indebted to A. Gómez-Olivencia, D. Rodríguez-Iglesias, L. Martín Francés, M.J. de Miguel, M.J. Alonso Escarza, A. Churruca Clemente, C. García Rodríguez, G.E. Abismo (especially R. Coronado), and G. Ross. We thank M. Carmen and F. Moñeco for contribution during the excavation. The Ayuntamiento de Tamajón was particularly helpful in logistical, financial, and bureaucratic issues, especially E. Esteban de la Morena. We thank all the administrative and technical staff of the CENIEH laboratories. L. Ames reviewed the manuscript. **Funding:** This work was supported by Junta de Comunidades de Castilla la Mancha annual projects SBPLY/23/180801/000041; Centro Nacional de Investigación sobre la Evolución Humana (CENIEH); European Research Council (ERC) under the European Union's

Horizon 2020 Research and Innovation Programme: DEATHREVOL (no. 949330 to N.S., A.P.-P., E.T., M.R.-A., and C.C.-S.), MULTIPALEOIBERIA (no. 805478 to M.A.-C., S.C., and L.L.), and SUBSILIENIA (no. 881299 to A.B.M.-A.); Ministerio de Ciencia e Innovación PID2021-122355NB-C31 and PID2021-122355NB-C33 funded by MCIN/AEI/10.13039/501100011033/FEDER, UE (to N.S., M.R.-A., A.P.-P., and A.P.); Ramón y Cajal grants funded by the Fondo Social Europeo and Agencia Estatal de Investigación, MCIN/AEI/ 10.13039/501100011033 and by 'FSE Investing in your future' RYC2020-029656-I (to N.S.), RYC2019-026697-I (to M.C.), RYC2018-025221-I (to M.Du.), and RYC2022-037802-I (to A.R.-H.); Junta de Andalucía EMERGIA20\_00403 (to A.P.); Australian research Council (ARC) Future Fellowship Project FT200100816 (to L.J.A. and M.De.); and Discovery Early Career Researcher Award DE160100743 (to M.De.). The dating work is part of Grant PID2021-123092NB-C22 funded by MCIN/AEI/ 10.13039/501100011033/ERDF A way of making Europe." This work was also supported by the Palarq Foundation "Abrigo de la Malia – Escenarios Ecológicos para la Evolución y Biogeografía de *Homo* en el interior peninsular mediante el análisis polínico de los sedimentos" - Tamajón, Guadalajara (to J.O. and J.S.C.). **Author contributions:** Conceptualization: N.S. and A.P. Investigation: N.S., M.A.-C., M.Arr., V.M.-P., A.P.-P., A.R.-H., E.T., M.C., S.C., L.J.A., M.De., M.Du., A.A.-B., J.L., J.O., G.C.-B., A.B.M.-A., and M.M.S. Fieldwork: N.S., M.A.-C., M.Arr., V.M.-P., A.P.-P., A.R.-H., E.T., M.C., S.C., L.J.A., M.De., M.Du., A.A.-B., J.L., J.O., G.C.-B., A.B.M.-A., M.M.S., and L.L. Writing—original draft: N.S., M.A.-C., M.Arr., V.M.-P., A.P.-P., A.R.-H., E.T., M.C., S.C., L.J.A., M.De., M.Du., A.A.-B., J.L., J.O., G.C.-B., A.B.M.-A., M.M.S., and L.L. Writing—review and editing: All authors have reviewed the final manuscript. **Competing interests:** The authors declare that they have no competing interests. **Data and materials availability:** All data needed to evaluate the conclusions in the paper are present in the paper and/or the Supplementary Materials.

Submitted 30 January 2024

Accepted 17 May 2024

Published 26 June 2024

10.1126/sciadv.ado3807